

Network Video Recorder

Quick Start Guide

1. Notes

- Please read this instruction carefully for correct use of the product and preserve it for reference purposes.
- All the examples and pictures used here are for reference only.
- There may be several technically incorrect places or printing errors in this manual. The updates will be added into the new version of this manual. The contents of this manual are subject to change without notice.
- This device should be operated only from the type of power source indicated on the marking label. The voltage of the power must be verified before using the same. Kindly remove the cables from the power source if the device is not to be used for a long period of time.

2. HDD Installation

This series of the product supports 8 SATA hard drives (some models may support 4 SATA hard drives). Please make sure that the device is powered off before the installation.



① Loosen the screws to open the cover.



② Loosen the upper mounting bar.



③ Screw HDD under the lower mounting bar.



④ Connect the power and data cables.



⑤ Install other three lower HDDs.



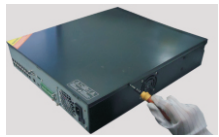
⑥ Install back the upper mounting bar.



⑦ Screw HDD under upper mounting bar.



⑧ Install other three upper HDDs.

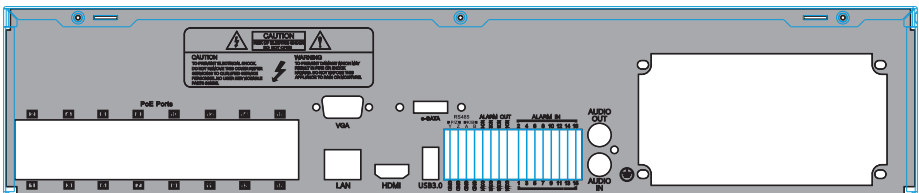


⑨ Install back the cover.

Note: There may be only one mounting bar for some models. Thus, only four HDDs can be installed under the mounting bar, just like step 5.

3. Rear Panel Instructions

The interface of the rear panel is for reference only.



Rear Panel

Name	Descriptions	Name	Descriptions
Alarm In	Alarm inputs for connecting sensors	Alarm Out	Relay output; connect to external alarm
GND	Grounding	HDMI port	Connect to high-definition display device
Audio Out	Audio output; connect to the sound box	VGA port	VGA output; connect to monitor
Audio In	For two-way talk; connect to active pickups	USB	Connect to USB devices (unavailable for upgrade)
E-SATA	Connect to external SATA HDD for backup	LAN	Network port
P/Z	Connect to speed dome. Y is TX+, Z is TX-	K/B	Connect to keyboard. A is TX+, B is TX-
1-16	IPC direct connection network ports		

4. Startup & Shutdown

► Startup

- ① Connect the monitor and the power.
- ② The device will boot and the power indicator will display blue.
- ③ A wizard window will pop up.

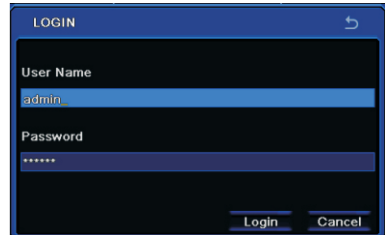
► Shutdown

By IR remote controller – Press power button to see a shutdown window. The device will shut down by selecting “OK” button. Then disconnect the power.

By mouse – Go to “Main Menu” and then select “Shutdown” icon. This will bring up a shutdown window. The device will shut down by clicking “OK” button. Then disconnect the power.

5. Login

After the wizard setup, you can see the live image. Right click to pop up a menu toolbar. Click “Main Menu” button. This will take you to see a login box. The default username is *admin*; the default password is *123456*. Enter username and password and click “Login” button to go to the main menu setup.

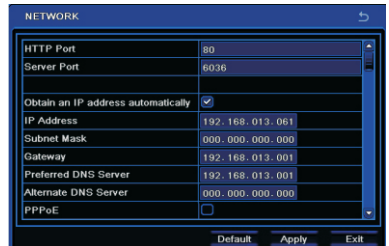


6. Network Configuration

After you finish adding IP cameras, you can see the live images through the monitor of the NVR. You may connect the previous 16 CH directly to the device through IPC direct connection network ports and then add the IP cameras for the remaining channels into the NVR via WAN/LAN. The following will mainly introduce how to add the IP cameras via LAN/WAN.

► LAN

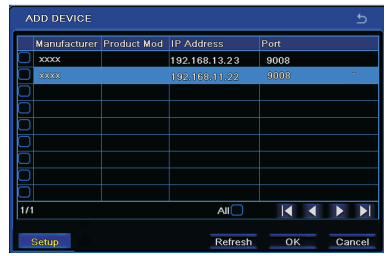
- ① Set the network of the NVR. Go to Main Menu→Setup→Network→Network as shown in Fig 1. Input HTTP port (the default value is 80), server port (the default port is 6036), IP address, subnet, gateway, etc. If using DHCP, please enable DHCP in both the NVR and the router.
- ② Go to Main Menu→IP Camera tab as shown in Fig 2. Click “Search” button to search the IP cameras in the same local network (The IPC which supports the Onvif protocol may be added manually). If the IPC is not in the same local network as the NVR, you can select the device and click “Setup” as in Fig 3 to modify the IP address. Please refer to the Chapter 4 of NVR User Manual.



(Fig 1)



(Fig 2)



(Fig 3)

② Checkmark the device you want to add and then click “OK” button to return to the previous interface to apply the settings. “Connected” status means connecting the device successfully and you will see the live image. You may select the added device and click “Setup” button to modify channel, IP address as shown in Fig 5 .



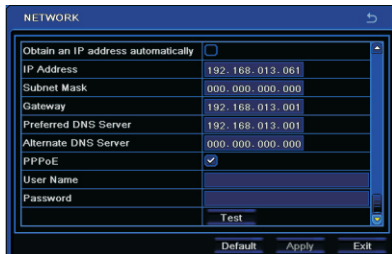
(Fig 4)



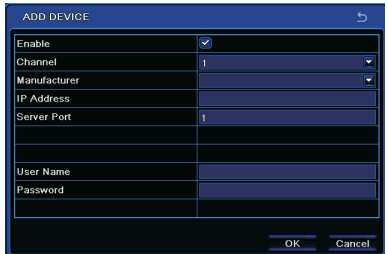
(Fig 5)

► WAN

① Set the network of the NVR. Go to Main Menu→Setup→Network→Network as shown in Fig 6. Input static IP address or enable PPPoE and then input the user name and password received from your ISP.
 ② Go to Main Menu→IP Camera tab. Click “Add” button to add the IP cameras as shown in Fig 7. Checkmark “Enable” checkbox, select channel, manufacturer and input IP address, server port, username and password of the IP camera. Then save the settings. The IP camera must be connected over WAN. And here the IP address of the IP camera must be a WAN IP address.



(Fig 6)



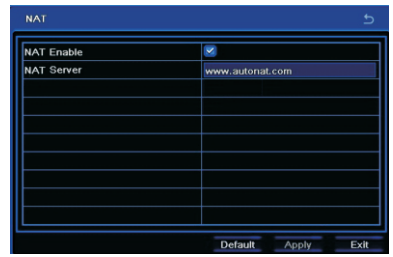
(Fig 7)

7. NAT

► NAT Settings

① The NVR shall be powered on and connected to the network.

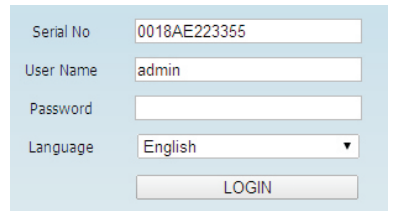
- ② Go to Main Menu→Setup→Network→Network. Refer to Fig 1. You can obtain the IP address, subnet mask and gateway automatically. You can also manually enter them according to the actual network situation. Please make sure the network segment is the same as that of the network which is used.
- ③ Set the preferred or alternative DNS Server. Click “Apply” to save the parameters.
- ④ Go to Main Menu→Setup→Network→NAT tab. Refer to Fig 8.
- ⑤ Enable NAT and input the NAT Server (The default NAT Server is www.autonat.com). Click “Apply” to save the parameters.



(Fig 8)

► NAT Access

After finishing the NAT settings, you can enter the NAT Server on the PC (Input <http://www.autonat.com> to go to the IE client). If you are the first time to access the NAT, the network will download the ActiveX automatically. After installing ActiveX successfully, it will pop up the login box:



- Serial No:** The MAC address of the NVR (Go to Main Menu → Information → Network to check the MAC address of the NVR).
- User Name:** The username of NVR. The default username is *admin*.
- Password:** The password of NVR. The default password is *123456*.

8. Manual Recording

Before recording, please install and format a HDD. Right click the mouse in the live interface to pop up the following menu toolbar. Click button to start recording.



9. Playback

Right click the mouse in the live interface to pop up the menu toolbar. Click the little triangle button beside button to set playback time (eg. 5 minutes). Then click button to play back the record from the past 5 minutes.

