

The client manual of IMSeeye Mac

This manual is the usage for the client software named IMSeeye of the Apple Computer remotely accessing Zenointel's DVRs.

2012.Dec

目录

目录	2
1 Installation	3
1.1 Introduction	3
1.2 Installation steps.....	3
2 Uninstallation of the program	6
2.1 Steps of uninstallation	6
3 Instructions	7
3.1 The introduction of the main interface	7
3.2 The real-time previewing menu	8
3.2.1 Add services	8
3.2.2 Buttons in the real time preview menu	9
3.3 The remote playback menu	11
3.4 The Video menu	11
3.5 The screenshot menu.....	12
3.6 the setup menu	13
3.7 The alarm menu	14

1 Installation

1.1 Introduction

This manual mainly describes that how to install MAC OS X system and use client monitoring software called IMSeYE on the Apple computer.

The main functions and features of the client software named IMSeYE of the Apple Computer are shown below.

- (1) preview videos in real time
- (2) control the PTZ
- (3) remote playback
- (4) record video and capture images
- (5) Alarm

1.2 Installation steps

Step 1: Log our official website(<http://www.zenointel.com>).Select Download - Tool software-IMSeYE from the menu bar .Then click the “Download”.Get the PKG file of the installation package after downloading. The interface is shown in Figure 1-1.

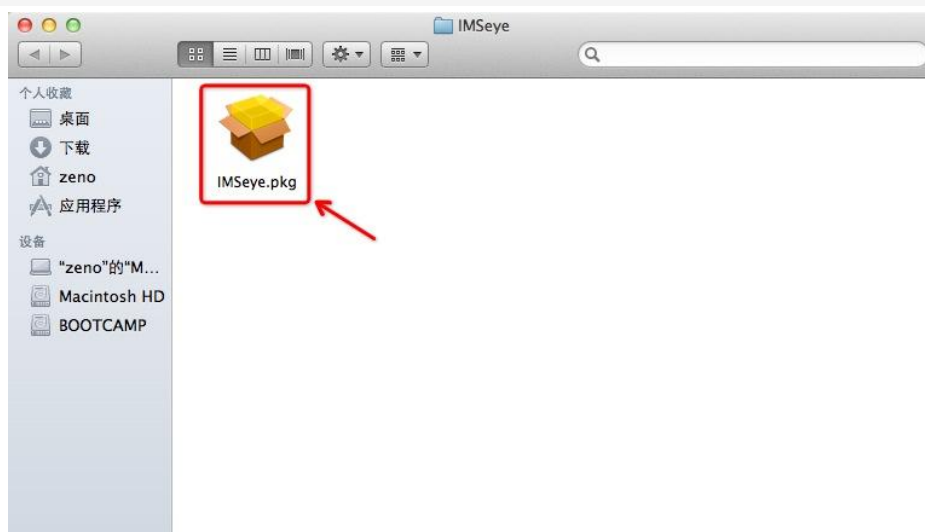


Figure 1-1

Step 2: Double-click the installation package of IMSeYE.pkg.In the pop-up interface

shown as Figure 1-2, click the Continue button.

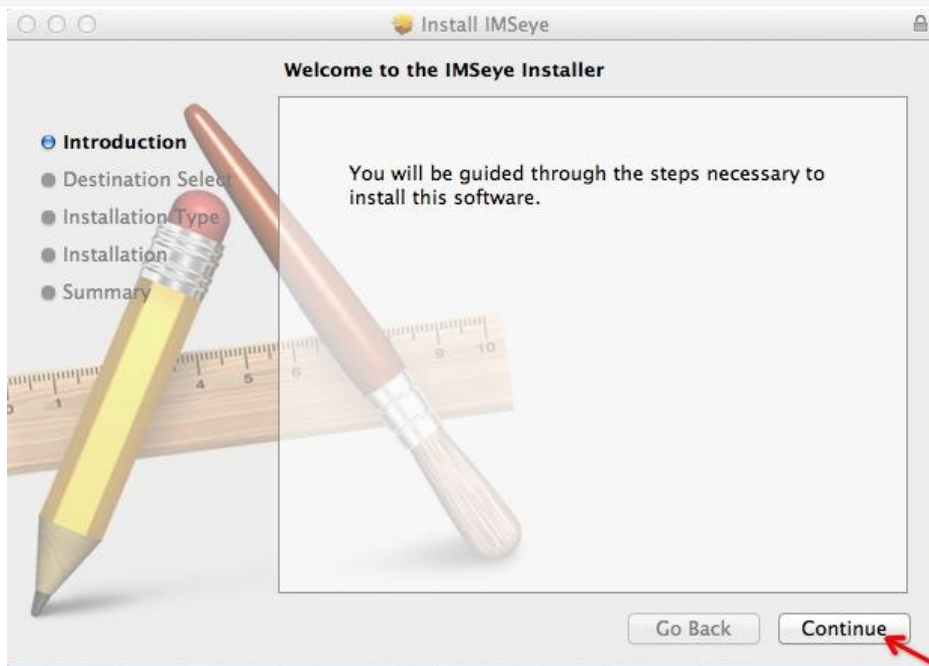


Figure 1-1

Step 3: Change the installation path. Click to install the software in the first partitioning disk of the system. The interfaces is shown in Figure 1-3, Figure 1-4 and Figure 1-5.

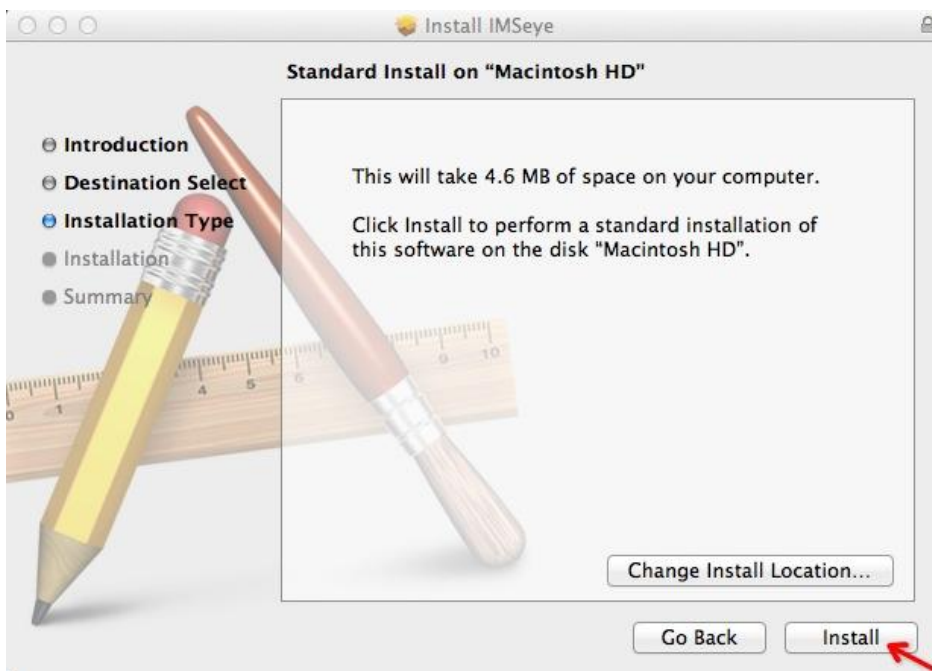


Figure 1-3

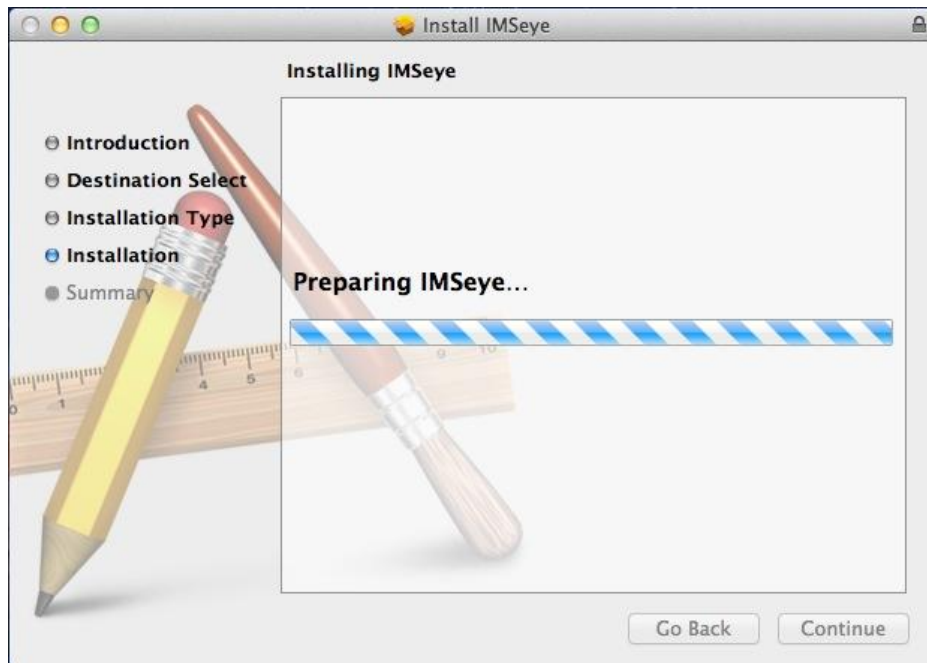


Figure 1-4

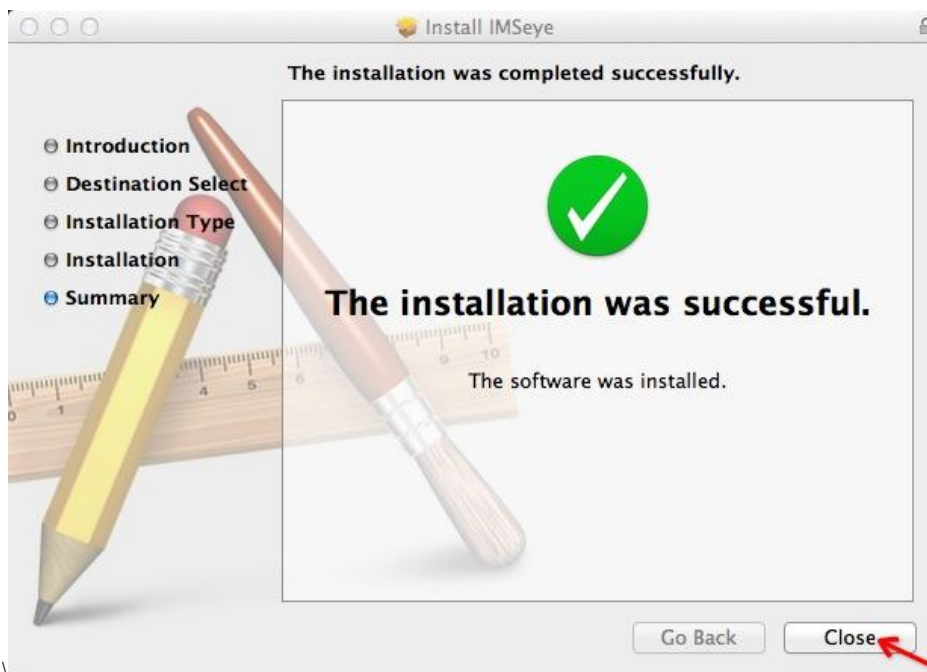


Figure 1-5

Step 4: Run the MAC's Finder program and switch to the application options.will appear After the installation,it will appear the icon of IMSeYe in the computer.The interface is shown in Figure 1-6.



Figure 1-6

2 Uninstallation of the program

2.1 Steps of uninstallation

Step 1: Download from the Internet and install a special tool named AppCleaner which is dedicated to uninstall applications in Mac OS X system. When finished, you can see in the interface in Figure 2-1.



Figure 2-1

Open AppCleaner. Drag the program icon of IMSeeye to AppCleaner. This operation is

shown in Figure 2-2.

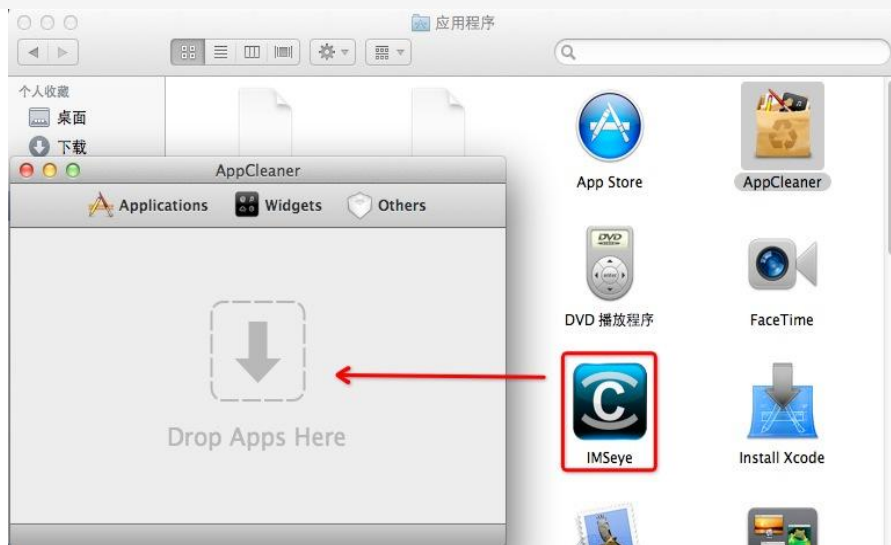


Figure 2-2

Click on the Delete button.AppCleaner will uninstall all documents related to this program.Refer to Figure 2-3.

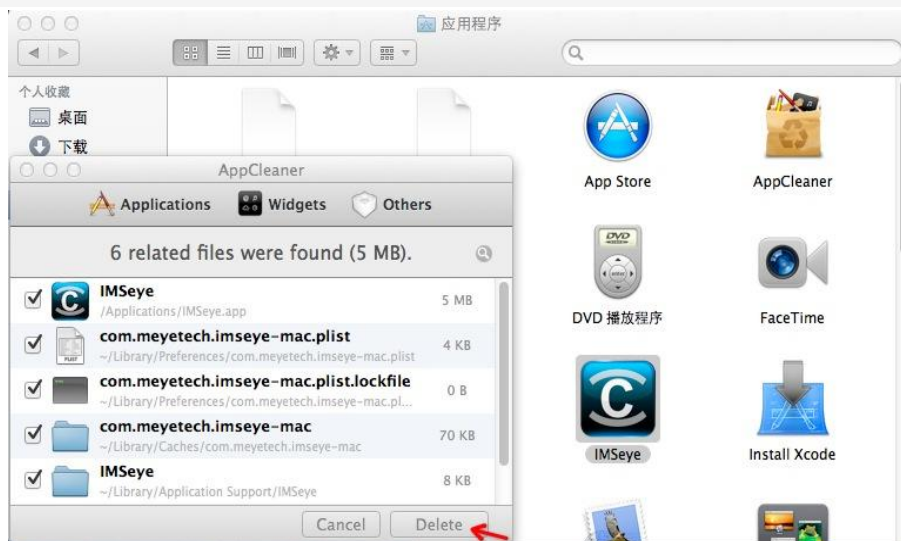


Figure 2-3

3 Instructions

3.1 The introduction of the main interface

The main interface's menu is divided into real-time browsing, remote playback, recording, screenshots, settings and alarming.The interface is shown in Figure 3-1.

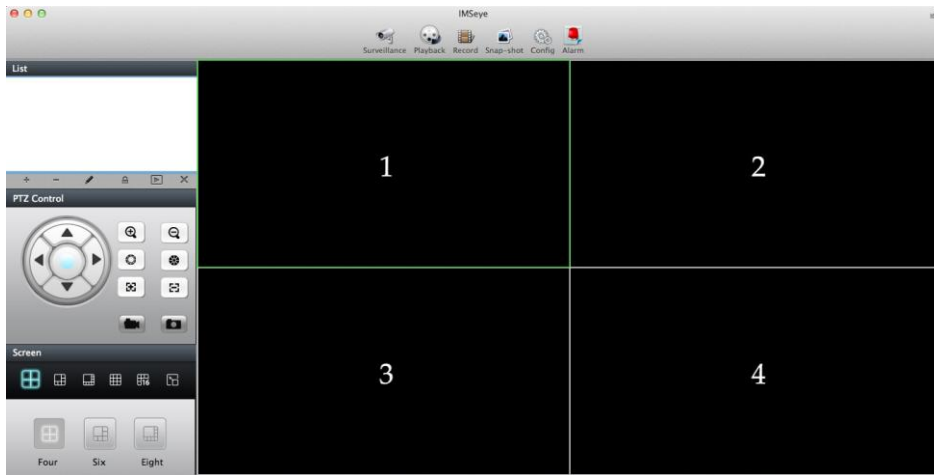


Figure 3-1

3.2 The real-time previewing menu

The real-time previewing menu includes: equipment list area, the PTZ control area, multi-screen area and display area of the video channel window. The equipment list area can be used to add, delete and edit equipments, and lock the channel, connect the video, and turn off the video. PTZ control area can be used to zooming, aperture, focusing and capturing. Multi-screen area can achieve multi-channel window display such as 4 screen, 6 screen, 8 screen, 9 screen, 16 screen and full-screen.

Note: The maximum number of connections that IMSeeye supports for single DVR is 10.

3.2.1 Add services

Click on the "+" button in the device list area. The interface is shown in Figure 3-2.

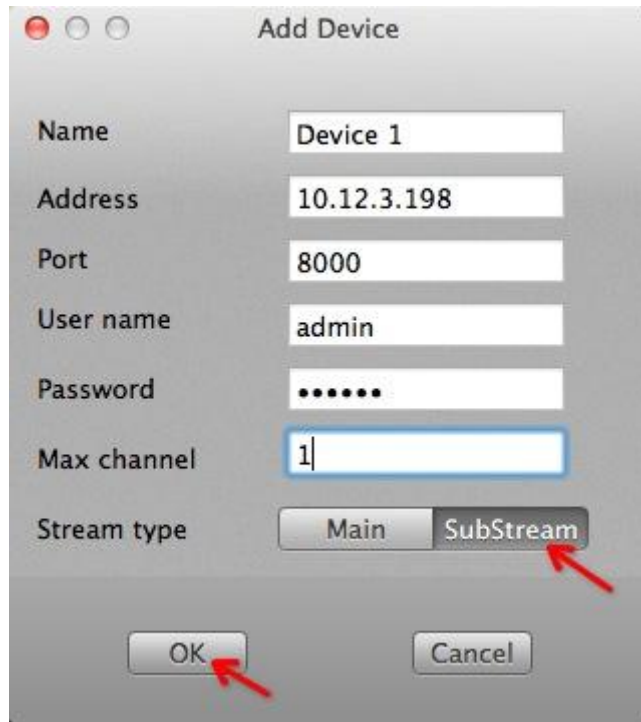


Figure 3-2



Device Name: The device's alias is convenient to distinguish between multiple devices.

Address: the DVR's public IP address or the dynamic domain name

Command Port: the server port set in the DVR

User Name: It must be the same with the user name set in the DVR.


Password: It must be the same with the password set in the DVR.

















Max Channel: The total selection of the device's channels

Stream type: select the sub-stream defaultly

3.2.2 Buttons in the real time preview menu

The functionS of the buttons:

Button icon	Name	Functions details
	Add	Add the connected device's name, IP address, port, user name, password the number of channels and the type of stream.

	Delete	Delete the selected equipment catalog.
	Edit	In the device list, edit and modify the selected device's parameters.
	Lock	After locking device channel and the video window is one on one bundled.
	Connect	The program is connected to the device and starts playing the video.
	Disconnect	Close the selected video playback window.
	Zoom	It is used to control the ball machine to enlarge.
	Zoom	It is used to control the ball machine to shrink
	Aperture	Increase the amount of light.
	Aperture	Reduce the amount of light.
	Focus	Increase the focal length.
	Focus	Reduce the focal length.
	Record	Recording
	Capture	Capture the current image
	9 screens	It is used to divide the video area into 9 channels window to display.
	16screens	16 channels window
	4screens	4 channels window

3.3 The remote playback menu

The remote playback menu includes the date display area, the searching area of equipments, channels and video types, the searching results display area and video playback play area. The interface is shown in Figure 3-3.

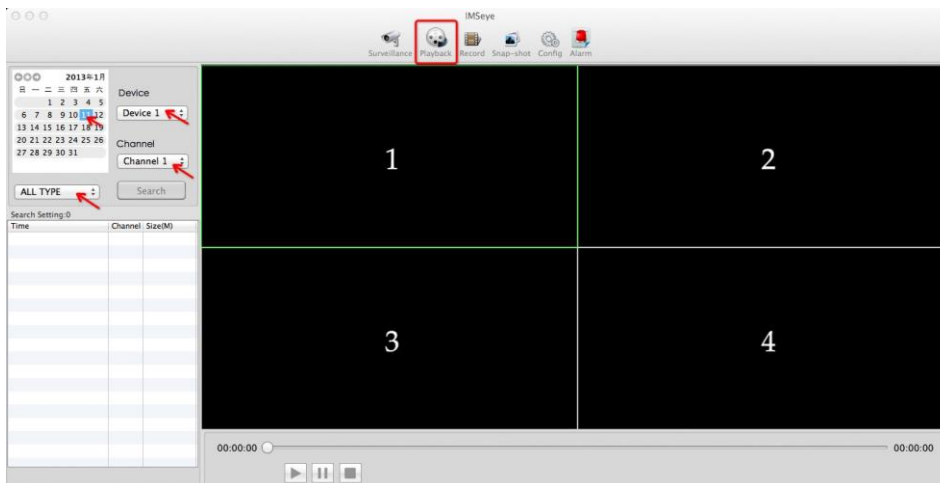


Figure 3-3

If you need to view the remote DVR's video files, select the relevant video file and press the Play button. The interface is shown in Figure 3-4.

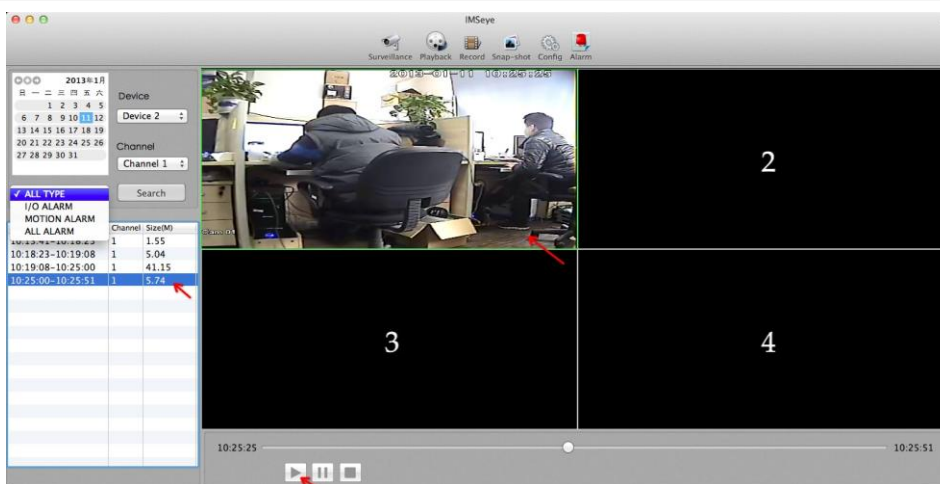


Figure 3-4

3.4 The Video menu

The videos menu includes date display area, searching and viewing area of equipments and channels, the search results display area and the video playback area. The

interface is shown in Figure 3-5.

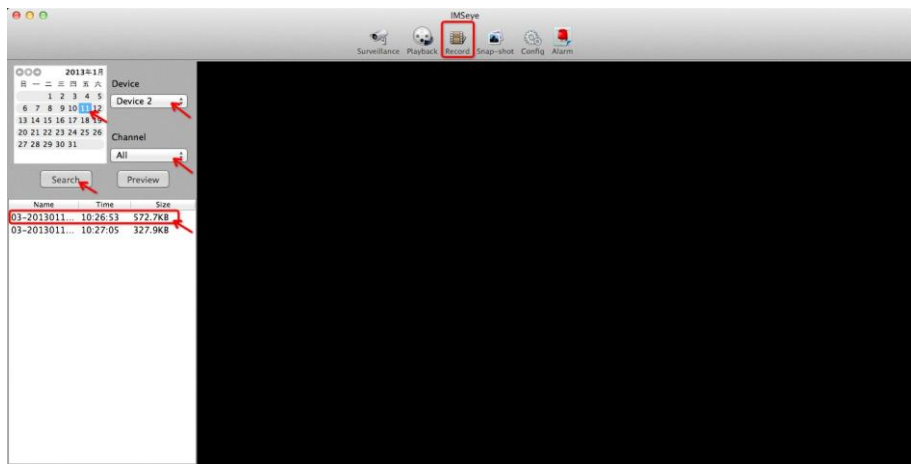


Figure 3-5

If you need to view local video files, select the relevant file and press the Play button. See the Figure 3-6.



Figure 3-6

In the Local video, you can view the recorded video in real-time monitoring.

- (1)The video mode is MP4;
- (2)The video shows the recording time, the equipment, and channels.
- (3)The video player can fast forward ,slow forward, and pause.
- (4)It supports video's searching.

3.5 The screenshot menu

The screenshot menu includes the screenshot previewing area.The main function of it

is enlarging and previewing the cross-sectional Fig.You can see the interfaces in Figure 3-7 and 3.8.

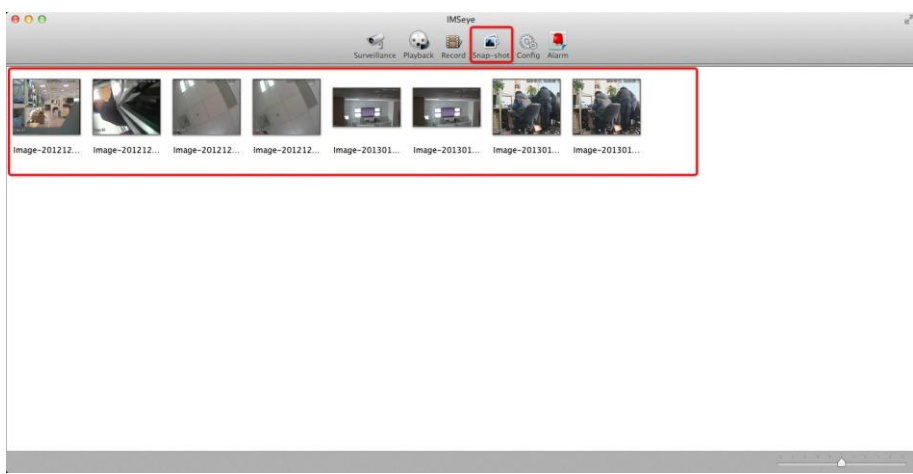


Figure 3-7

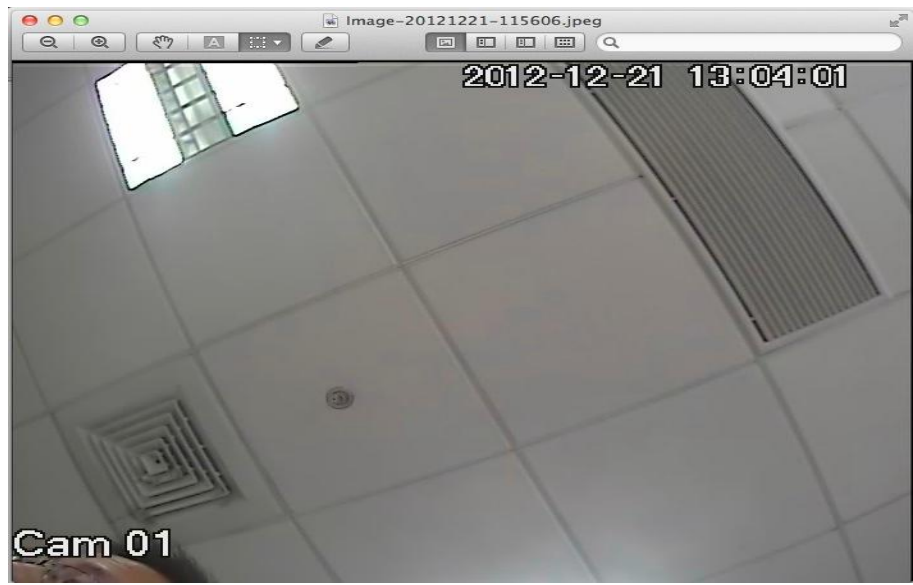


Figure 3-8

3.6 the setup menu

The set menu includes areas of multimedia path, password settings, video settings and smoothing types. Multimedia path area can change the video file and the Screenshots' saving locations. Password Settings area can realize protecting of the software's usage rights and the display of the channel number and IP address with password. The video settings can set the longest recording. The smooth type can support video playback of fluency in the case of low network bandwidth. The interface is shown in Figure 3-9.

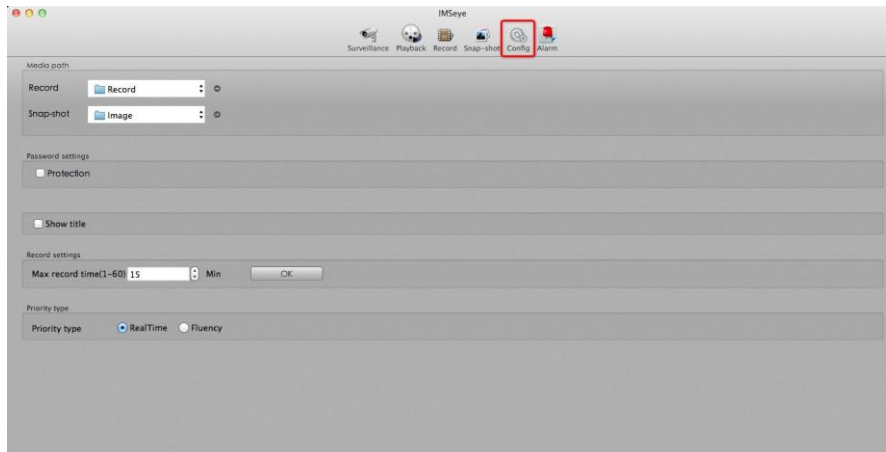


Figure 3-9

3.7 The alarm menu

The alarm menu includes the display area of alarm logs. The alarm logs display area can record and display the number of the alarm, the alarm time, the device name, the type of alarm and the alarm port / channel number. The interface is shown in Figure 3-10.

The screenshot shows the IMSeye software interface with the 'Alarm' icon highlighted in red. Below the icons, there is a table displaying alarm logs. The table has five columns: '序号' (Serial Number), '时间' (Time), '设备名称' (Device Name), '报警类型' (Alarm Type), and '接口/通道号' (Interface/Channel Number). The table contains 31 rows of data, all showing 'Device 2' as the device name and '移动侦测报警' (Motion Detection Alarm) as the alarm type. A red arrow points to the '接口/通道号' column.

序号	时间	设备名称	报警类型	接口/通道号
1	2013-01-11 10:26:27	Device 2	移动侦测报警	3
2	2013-01-11 10:26:30	Device 2	移动侦测报警	5
3	2013-01-11 10:26:30	Device 2	移动侦测报警	7
4	2013-01-11 10:26:45	Device 2	移动侦测报警	3
5	2013-01-11 10:26:46	Device 2	移动侦测报警	5
6	2013-01-11 10:26:46	Device 2	移动侦测报警	7
7	2013-01-11 10:27:08	Device 2	移动侦测报警	3
8	2013-01-11 10:27:13	Device 2	移动侦测报警	5
9	2013-01-11 10:27:16	Device 2	移动侦测报警	7
10	2013-01-11 10:27:19	Device 2	移动侦测报警	3
11	2013-01-11 10:27:28	Device 2	移动侦测报警	7
12	2013-01-11 10:27:30	Device 2	移动侦测报警	5
13	2013-01-11 10:27:32	Device 2	移动侦测报警	3
14	2013-01-11 10:27:44	Device 2	移动侦测报警	3
15	2013-01-11 10:27:56	Device 2	移动侦测报警	3
16	2013-01-11 10:27:57	Device 2	移动侦测报警	7
17	2013-01-11 10:28:00	Device 2	移动侦测报警	5
18	2013-01-11 10:28:08	Device 2	移动侦测报警	3
19	2013-01-11 10:28:13	Device 2	移动侦测报警	7
20	2013-01-11 10:28:14	Device 2	移动侦测报警	5
21	2013-01-11 10:28:23	Device 2	移动侦测报警	3
22	2013-01-11 10:28:24	Device 2	移动侦测报警	7
23	2013-01-11 10:28:36	Device 2	移动侦测报警	3
24	2013-01-11 10:28:42	Device 2	移动侦测报警	5
25	2013-01-11 10:28:47	Device 2	移动侦测报警	3
26	2013-01-11 10:28:53	Device 2	移动侦测报警	5
27	2013-01-11 10:28:53	Device 2	移动侦测报警	7
28	2013-01-11 10:29:00	Device 2	移动侦测报警	3
29	2013-01-11 10:29:04	Device 2	移动侦测报警	5
30	2013-01-11 10:29:11	Device 2	移动侦测报警	3
31	2013-01-11 10:29:16	Device 2	移动侦测报警	7

Figure 3-10

Note: You can make adjustments according to the PC performance and network status. Higher PC performance and network conditions can show better results. If the network is in poor condition, please appropriately reduce the frame rate or use the sub-stream to ensure the fluency of the screen.