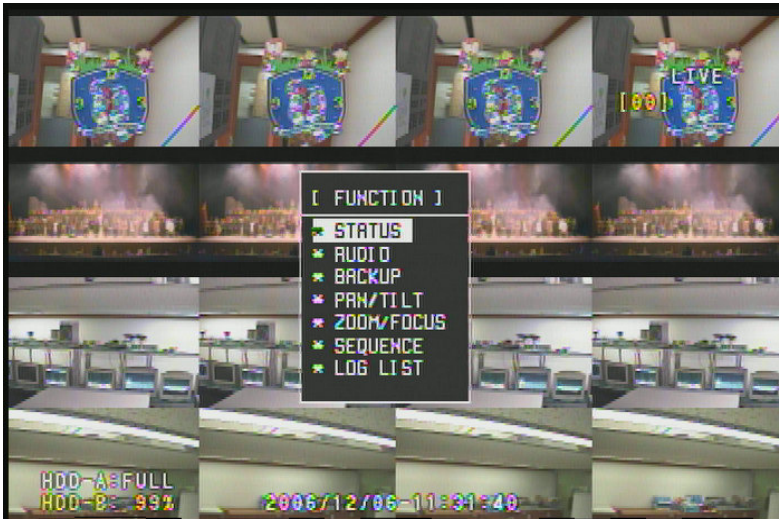


PRESS ON THE FUNCTION KEY (OR BACK UP) ON THE INTERFACE OF THE DVR.
IF YOU PRESS ON FUNCTION KEY, YOU WILL HAVE OPTIONS BELOW. YOU MAY GO DOWN TO BACK UP AND PRESS SELECT KEY.



FOR THE MEDIA TYPE, MAKE SURE YOU HAVE THE CORRECT MEDIA. THE DVR, UNLESS YOU ORDERED WITH DVD ROM, WILL COME WITH CD RW. THE DVR WILL ONLY SUPPORT CD-R OR CD-RW. FOR THE BACK UP BASE, SET TO TIME FOR THE CALENDAR VIEW. IF YOU WOULD LIKE TO MAKE A BACK UP FOR SOME OF THE CAMERAS, SET THE CHANNEL TO PART.



CHECK THE CAMERAS THAT YOU WOULD LIKE TO BACK UP. SET THE START TIME AND THE END TIME. MOVE YOUR CURSUR TO BACKUP AND PRESS SELECT

