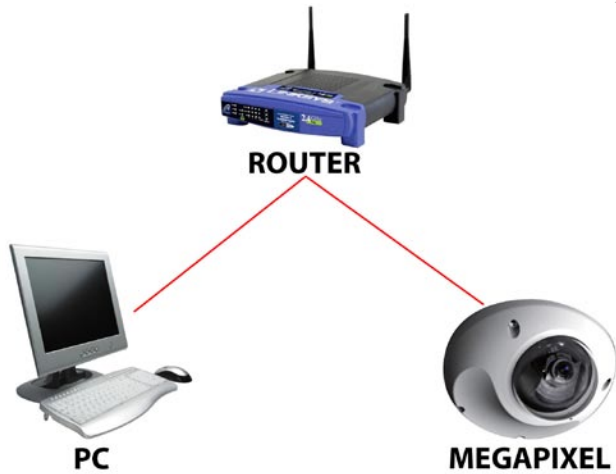


Megapixel IM-D22 QUICK CONNECTION STEP

WIRING

- 1) Make sure the Megapixel Camera is connected in the router, and then go to the PC that is in the same Network as shown the picture below.



FINDING ROUTER INFORMATION

- 2) From the PC open CMD window, then type "ipconfig/all" -> ENTER
Windows 7/Vista: START -> type CMD on "Search Programs and Files" -> ENTER
Windows XP: START -> RUN -> type CMD -> ENTER

Obtain the following information from ipconfig/all

- IP ADDRESS (ex. 192.168.1.3)
- SUBNET MASK (ex. 255.255.255.0)
- GATEWAY (ex. 192.168.1.1)

```
Administrator: C:\Windows\system32\cmd.exe
Ethernet adapter Local Area Connection:

    Connection-specific DNS Suffix  . : 
    Description . . . . .           : Realtek PCIe GBE Family Controller
    Physical Address. . . . .       : 90-E6-BA-80-0D-39
    DHCP Enabled. . . . .           : Yes
    Autoconfiguration Enabled . . . : Yes
    Link-local IPv6 Address . . . . .: fe80::c90b:ac59:3757:f34a%11(Preferred)
    IPv4 Address. . . . .            : 192.168.1.3(Preferred)
    Subnet Mask . . . . .            : 255.255.255.0
    Lease Obtained. . . . .         : Tuesday, July 06, 2010 7:45:08 AM
    Lease Expires . . . . .         : Thursday, July 08, 2010 7:45:07 AM
    Default Gateway . . . . .       : 192.168.1.1
    DHCP Server . . . . .           : 192.168.1.1
    DHCPv6 IAID . . . . .           : 244377274
    DHCPv6 Client DUID. . . . .     : 00-01-00-01-13-28-D8-61-90-E6-BA-80-0D-39

    DNS Servers . . . . .           : 192.168.1.229
    NetBIOS over Tcpip. . . . .     : Enabled

Tunnel adapter Local Area Connection* 9:

    Media State . . . . .            : Media disconnected
    Connection-specific DNS Suffix  . : 
    Description . . . . .           : Teredo Tunneling Pseudo-Interface
    Physical Address. . . . .       : 00-00-00-00-00-00-00-E0
    DHCP Enabled. . . . .           : No
    Autoconfiguration Enabled . . . : Yes

Tunnel adapter isatap.{805DB655-CDFE-4901-A179-5A3C9BFBC3F4}:

    Media State . . . . .            : Media disconnected
    Connection-specific DNS Suffix  . :
```

PRIME PRO MEGA

FIND & CHANGE CAMERA INFORMATION

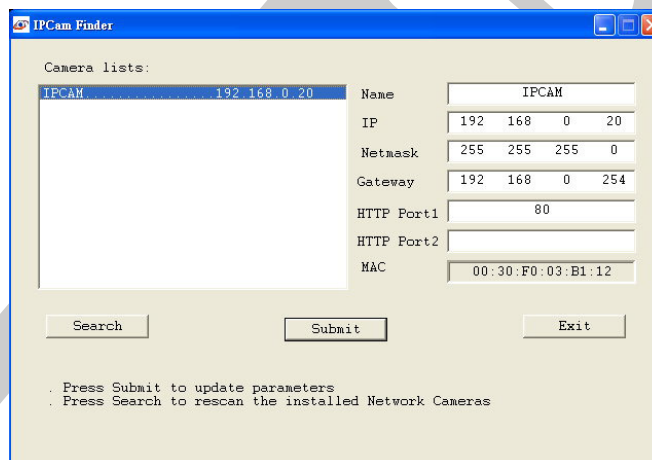
- 3) Insert the CD to the PC that came in the Camera BOX or download it from www.eyemaxdvr.com
Run (double click) IP Finder.exe



- 4) Click on Search to find the Camera.
(The PC where IP Finder.exe is running and the Camera must be in same Network)

By Default our Megapixel Cameras have the following information.

IP = 192.168.0.20
NETMASK = 255.255.255.0
GATEWAY = 192.168.0.254
HTTP PORT1 = 80



- 5) Once the IP Finder finds the camera, select Camera from Camera List then change its information and press SUBMIT to save.

We need to replace the information that we got from CMD (Step 2, 3)
IP = Use an IP address different from PC and that no one else is using (ex. 192.168.1.20)
NETMASK = Type same as CMD information (ex. 255.255.255.0)
GATEWAY = Type same as CMD information (ex. 192.168.1.1)

- 6) Now that we gave a new IP Address to the Camera let's try to connect by using Web Browser (IE).
Open IE (Internet Explorer) then type the new IP Address (ex. 192.168.1.20) on the address bar.
- 7) Download & Install the ActiveX.
- 8) To login to the camera it will ask for ID and Password
ID : root (default)
Password: root (default)