

Quick Reference Manual

For Truen's video server and IP Cameras

TRUEN Co.,LTD

1. Introduction

The IP Camera and Video Server are a video/audio transmission system that provides video and audio surveillance and control function based on a LAN, ADSL/VDSL, Wireless LAN etc., IP Network.

The installation manual is a document to help connect IP Camera and Video Server to the network, check video, and make necessary changes. For specific function settings and application refer to the User Manual.

2. IP setup

■ IP initialization

IP initialization is a process to change a currently set IP that is unknown or set as DHCP into a desired IP.

Currently set IP's status can be checked and changed through the Manager Program. In this case we can omit the IP initialization process.

Once the IP setting is initialized it is set as followed. DI settings will be same as factory default.

Address Mode	Address Mode
IP address	192.168.10.100
Subnet Mask	255.255.255.0
Base Port	2222
HTTP Port	80

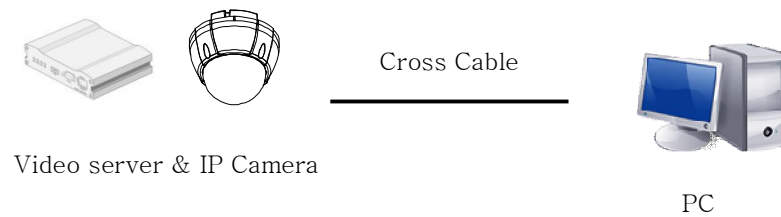
Steps in IP initialization are as follows.

- 1) Connect power to the system
- 2) After system initialization is complete (about 20~30seconds) wait until STATUS LED flashes green (or red).
- 3) Press the reset button until all the LEDs are red (about 5 seconds). Once the system restarts stop pressing the restart button.

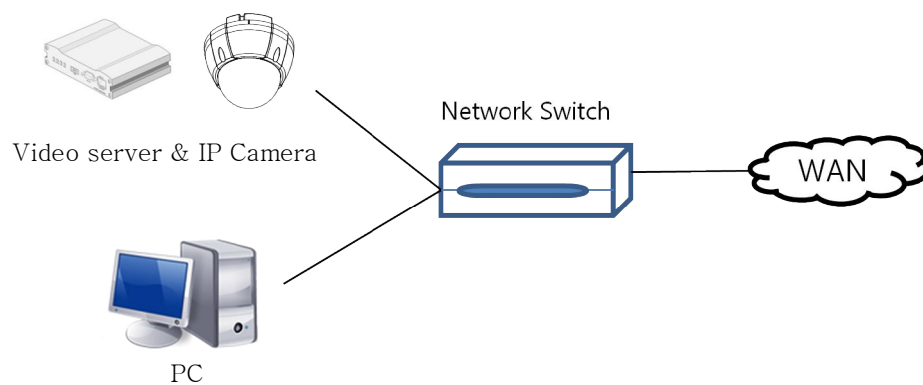
■ Setting IP using Manager

The desired IP can be set using Manager.

- 1) First connect the system to the PC, that you will use Manager on, and the network, and turn the power on.

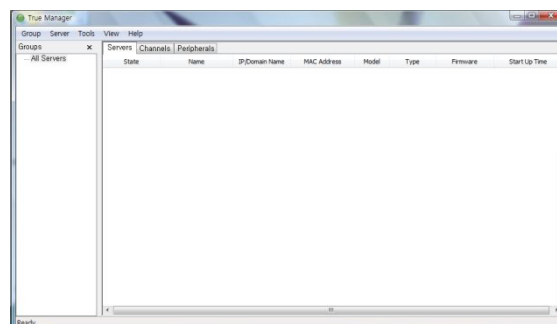


(Configuration 1. Direct connection by using cross cable)

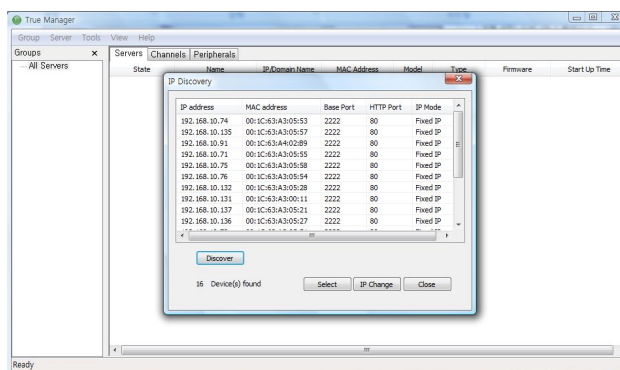
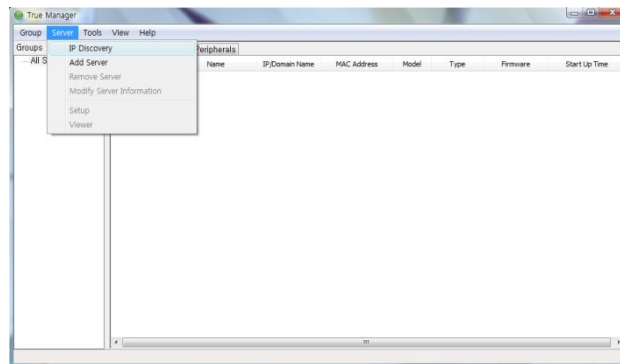


(Configuration 2. Internet connection by using network switch)

- 2) Run Manager on PC.



3) Choose IP discovery



4) When the desired server Information is displayed us the IP change button to fix it.

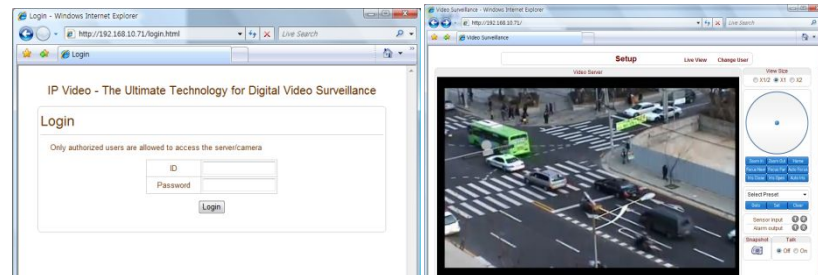
5) If the desired server information can not be displayed through IP Discovery, please check the following.

- Please check if the server's power and network cable is connected properly.
- The status LED needs to be blinking with a green light.
- Check if the server is unable to receive IP while set as DHCP.
- If the status light flashes with a red light the IP needs to go through initialization.
- The PC's security program blocks the broadcast for discovery. In this case please allow broadcast in each security program.

■ Checking connectivity with the set IP

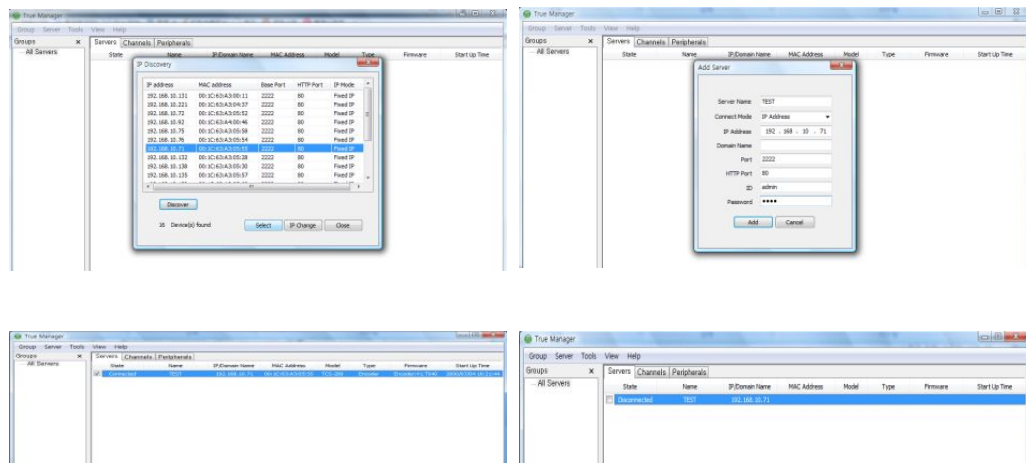
1) Checking through web browser

- Enter the IP in the address of the web browser.
- A login page like the following will come up.
- The factory default ID is admin, Password is 1234.
- A video clip can be viewed after log in.



2) Checking through Manager.

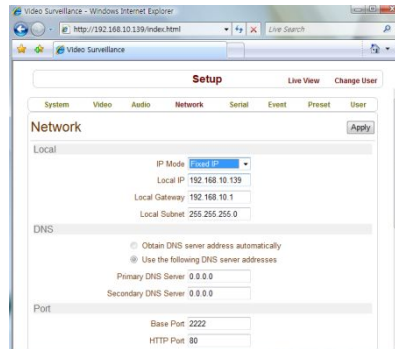
- Register the corresponding server using the menu.
- By pressing the connect button, the corresponding server information can be viewed.



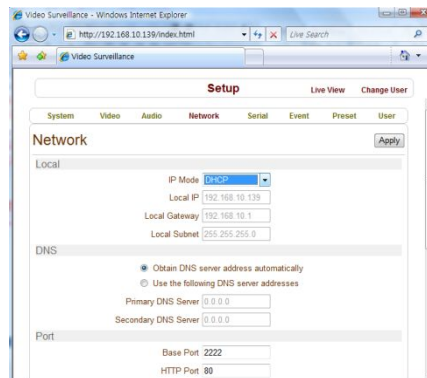
3. Connecting to standard IP

- In the case of using a static IP (Connection that receives a fixed IP or LAN connection)

As shown in the following picture, choose the fixed IP and set the IP.



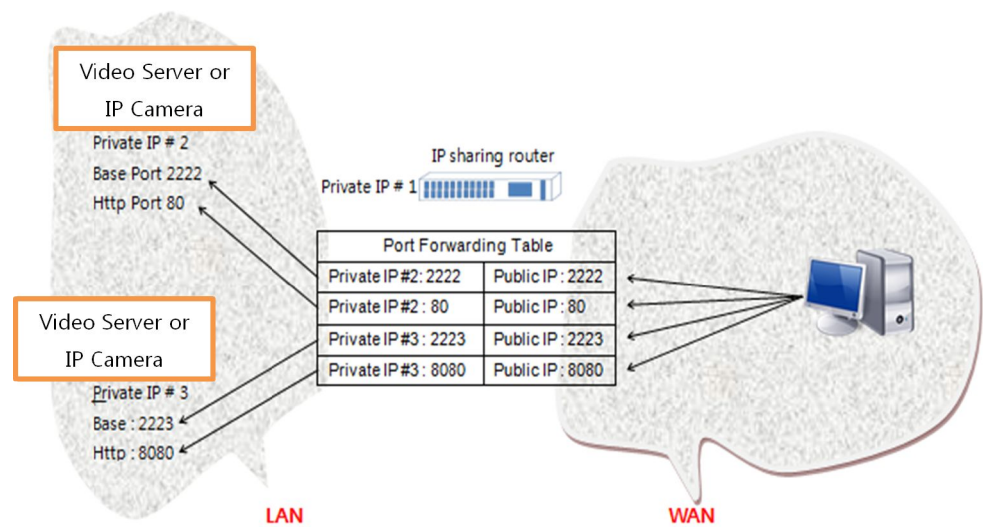
- ◆ Pressing Apply will save the settings. After connecting the equipment to the desired network, the user can connect to the designated IP.
- ◆ When using a static IP, automatic DNS reception is unavailable. Therefore the DNS server's address needs to be manually entered.
- In the case of using a dynamic IP (direct connection to cable modem or using a router)



- ◆ Pressing Apply will save the settings. After connecting the equipment to the desired network, the user can connect to the designated IP. To set DHCP, first connect to the desired network and connect the system's power.

4. Additional network connection settings

- Looking at router's internal equipment using the internet.
 - ◆ The router's port forwarding function needs to be used to view videos on the internet when the system is connected to the network using a router.
 - ◆ First set the system as a static IP. When using DHCP, port forwarding can not be used.
 - ◆ Use the router's port forwarding function and open the corresponding server's Base port and HTTP port.



- ◆ By changing the port number, you are able to connect to two or more system from outside.
- ◆ Router's port forwarding settings vary in router type, so please refer to the router's manual.
- Using DDNS
 - ◆ DDNS is used when setting a system domain name for a dynamic IP. When using DDNS the user will connect to the system by using a domain name like <http://aaa.bbb.ccc>, not a IP.
 - ◆ According to the server type, DDNS supports two forms.
 - Truen DDNS : Uses a DDNS server provided by Truen
System registration or status check can be done at <http://ns1.truecam.net> .
 - DynDNS : Form that uses a Dyn DNS service
Detailed information can be checked at www.dyndns.org.