

P2P&Push video Manual

1. Overview

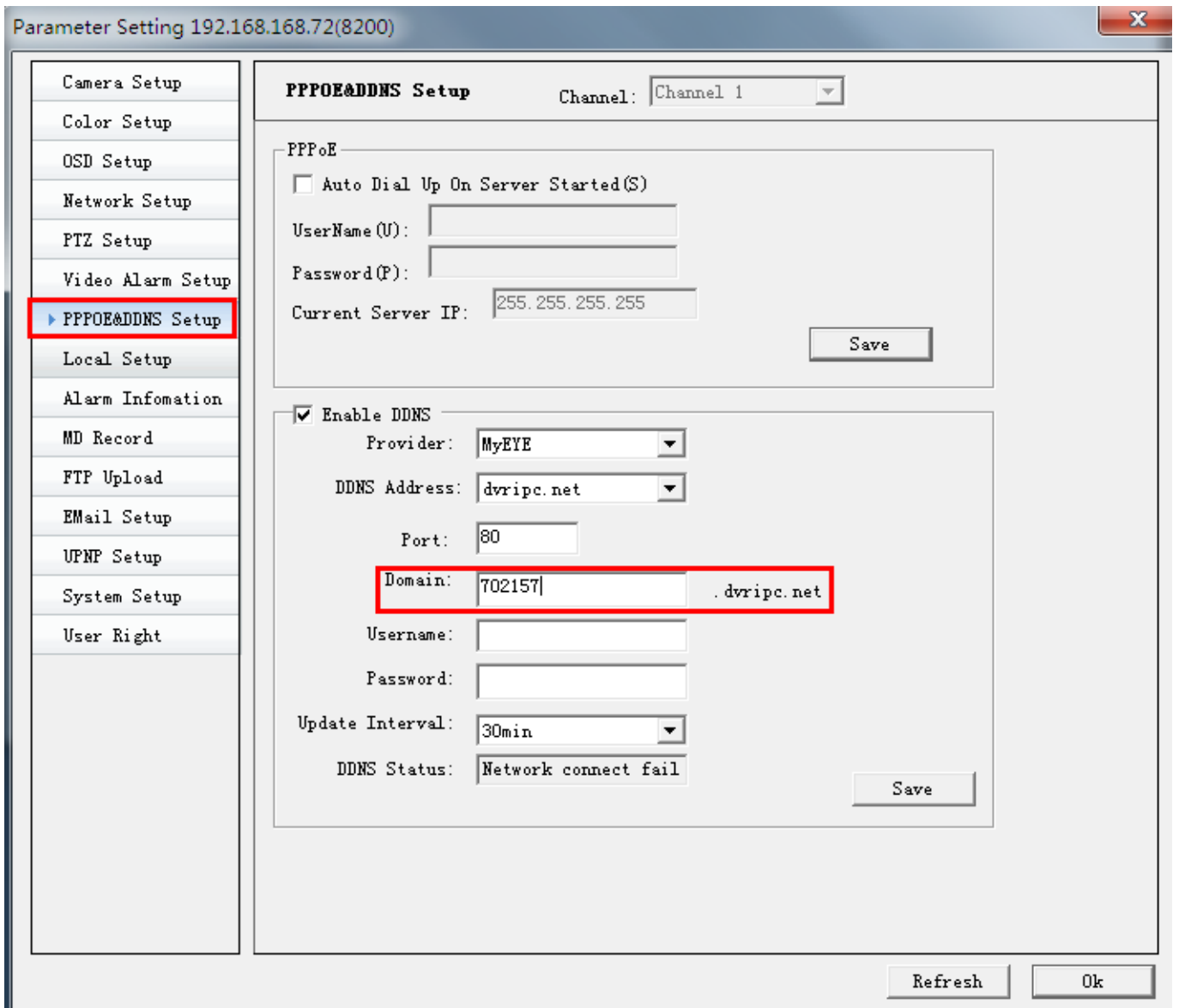
P2P is short for "plug-in and play" in English, also known as "Plug and play", is a kind of new network technology, are widely used in the download, online video watching, and other areas of the need to connect remotely. After joining P2P function of IP Camera, you can remote access IP Camera through the internet anytime anywhere, not need to do port forwarding on router.

2. P2P (Automatic penetration function)

1) IE

a. Install ActiveX

Enter the My E-Video domain name in the web address bar. You can find the domain name in the webpage of the IP Camera' s setting : Setting - PPPOE&DDNS Setup - Enable DDNS - MyEYE. **When you set ReStone, need to enable the MyEYE function. You just need make sure the network of IP camera can connect to the internet, the MyEYE function will work. This is P2P function.**



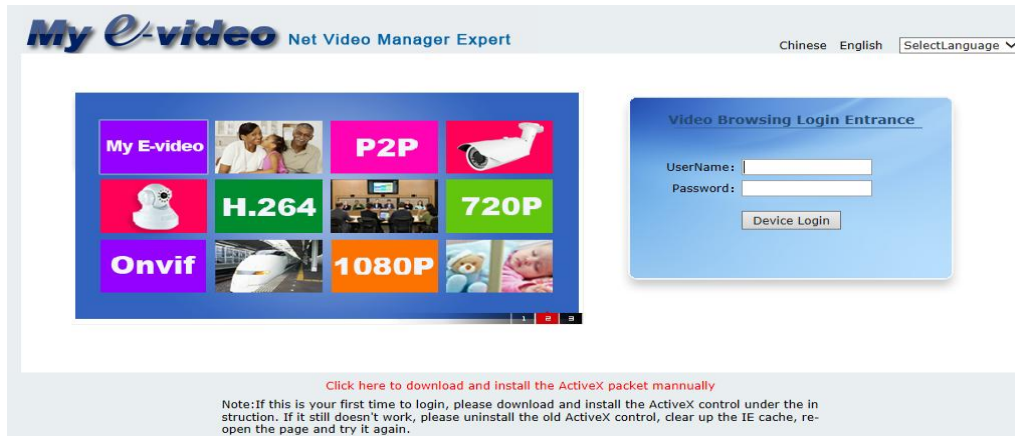
1. When you first time use this webpage or when you see the live show have no image , please click here to download and install the ActiveX packet manually.

[Click here to download and install the ActiveX packet manually](#)

Please save the ActiveX packet on you computer , the file name is : "NVWEBOCX_setup.exe" .

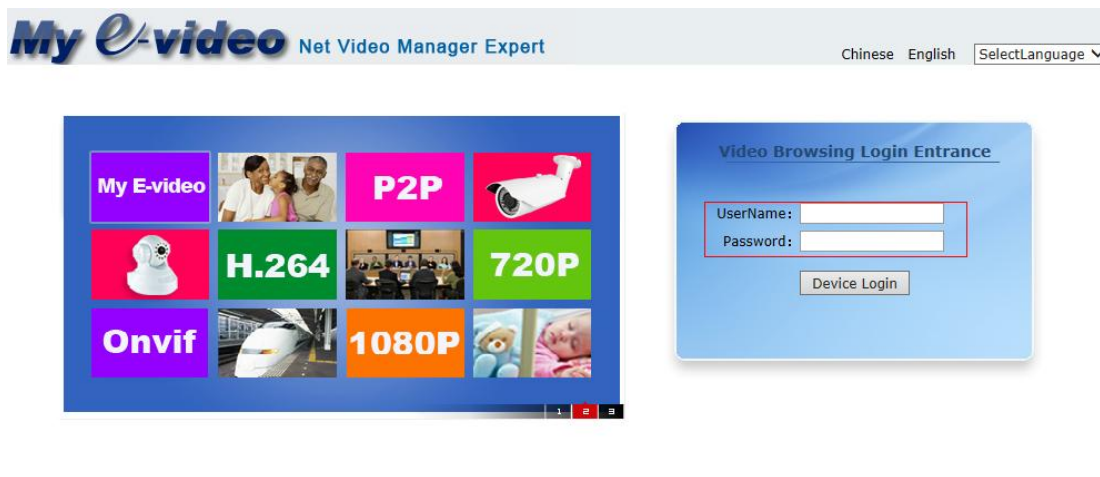
2. Close the browser, close the Client software. Click the NVWEBOCX_setup.exe and install.

After install, please open the IE browser, enter the My E-Video domain name in the web address bar, then you can see the webpage show like below.

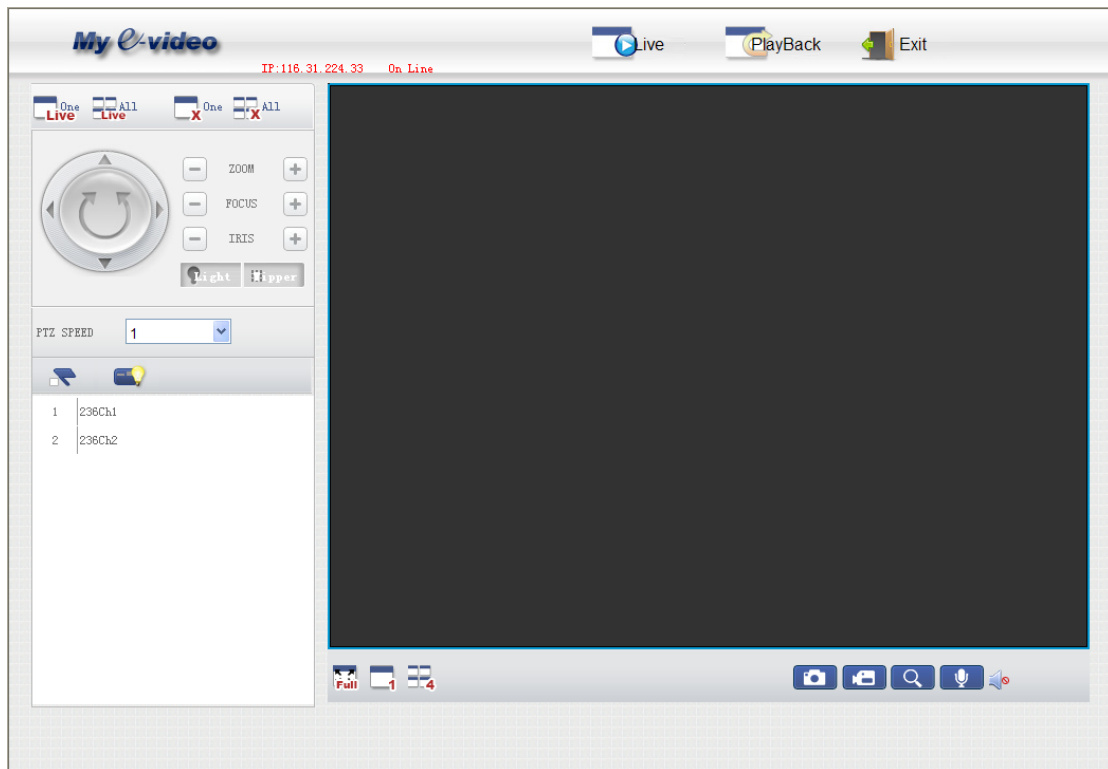


b) login the P2P device

1. When you open the IP camera webpage, enter the username and password.

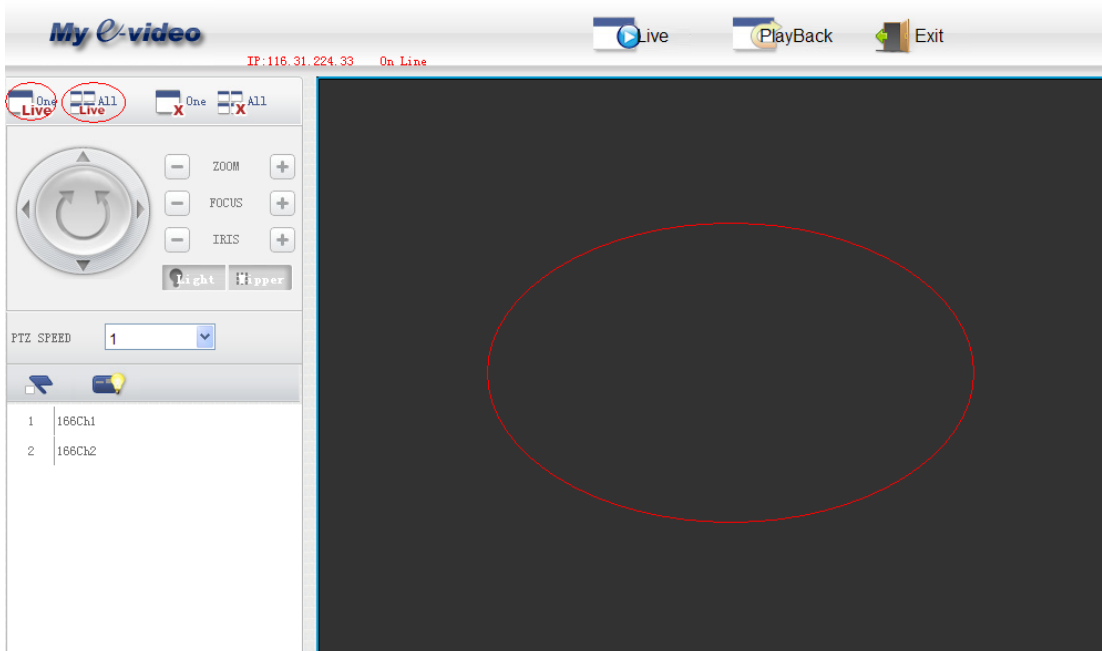


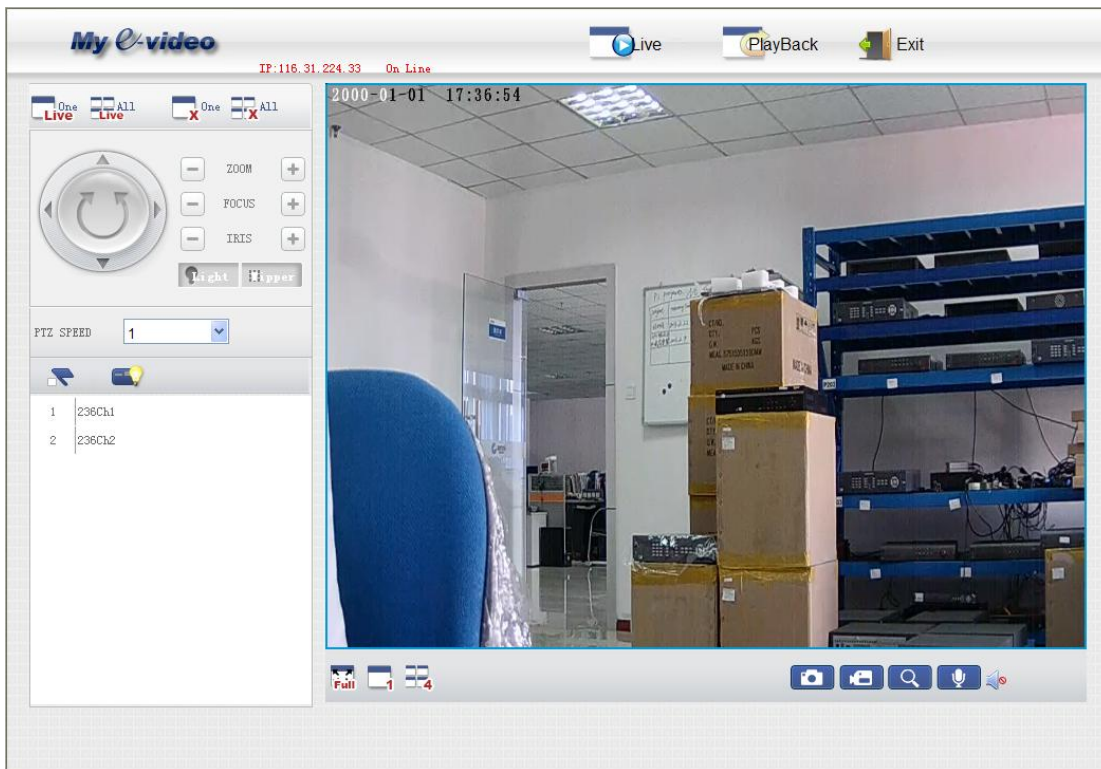
2. When you login succeed, there will show the below image.



c) Live show


1. Connect to the channel image, please click the [LIVE] buttons.

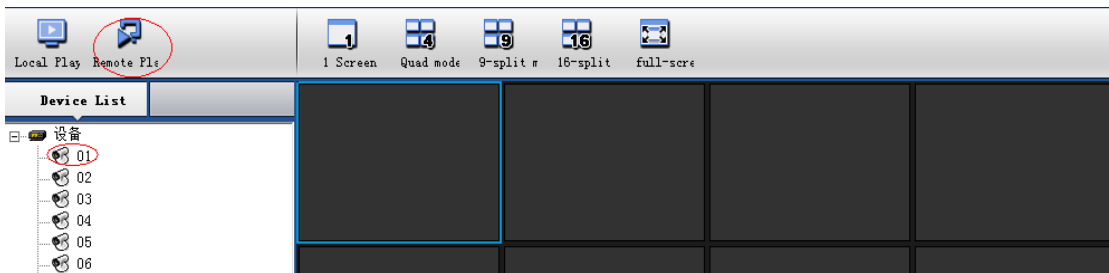




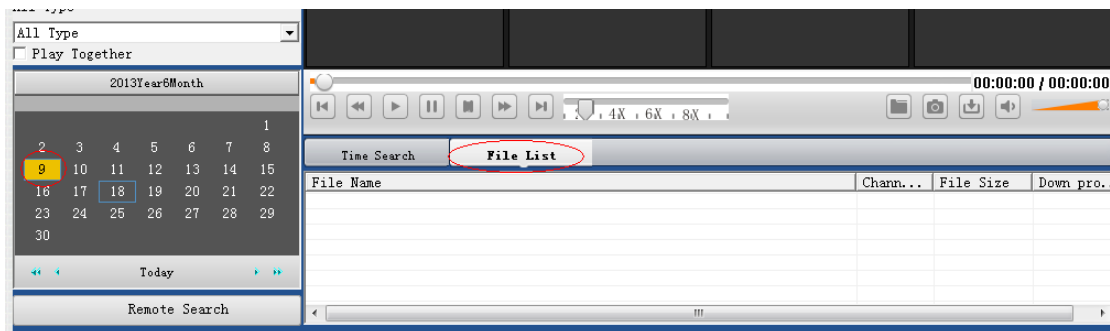
d) Remote playback

(when you search the remote video files, need open the live show first)

1. Click the [Playback]  button in the menu, then choose the [Remote Playback]

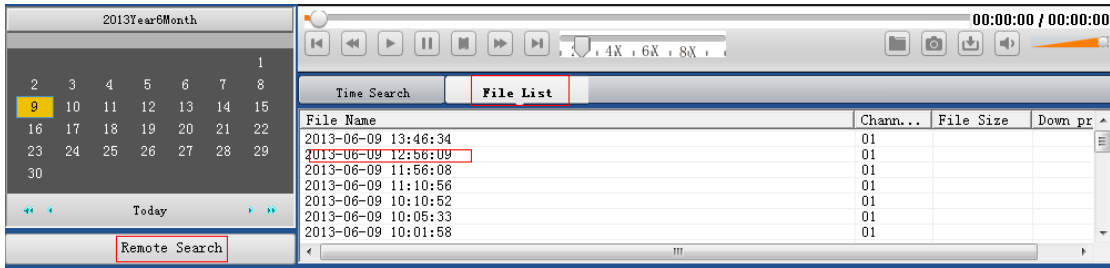


2. Choose the date of the day which have record, then choose the [File List]

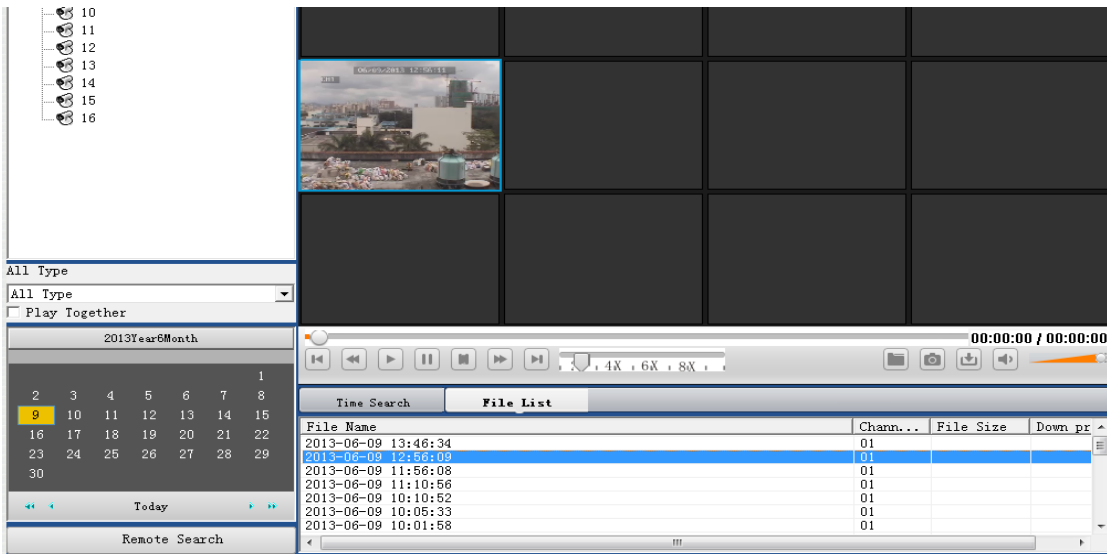


3. Click the [Remote Search] button, search the video file of the channel which you open on the live

show



4. Double click the search files, the video will playback.



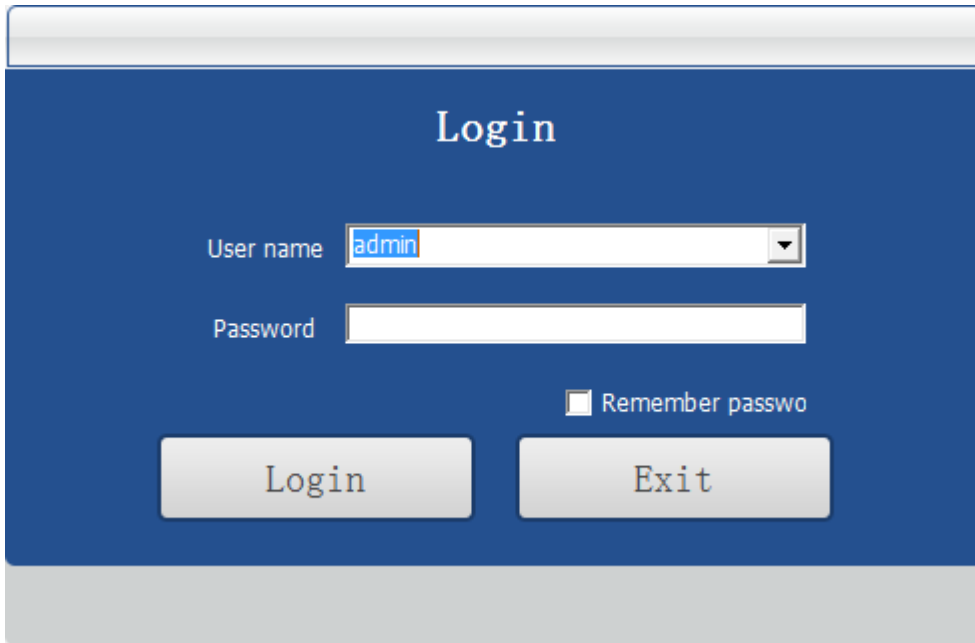
1. When you install the ActiveX, if you already install before, need to download the ActiveX to the computer, close the IE browser then install it.

2) CMS

a) Install CMS

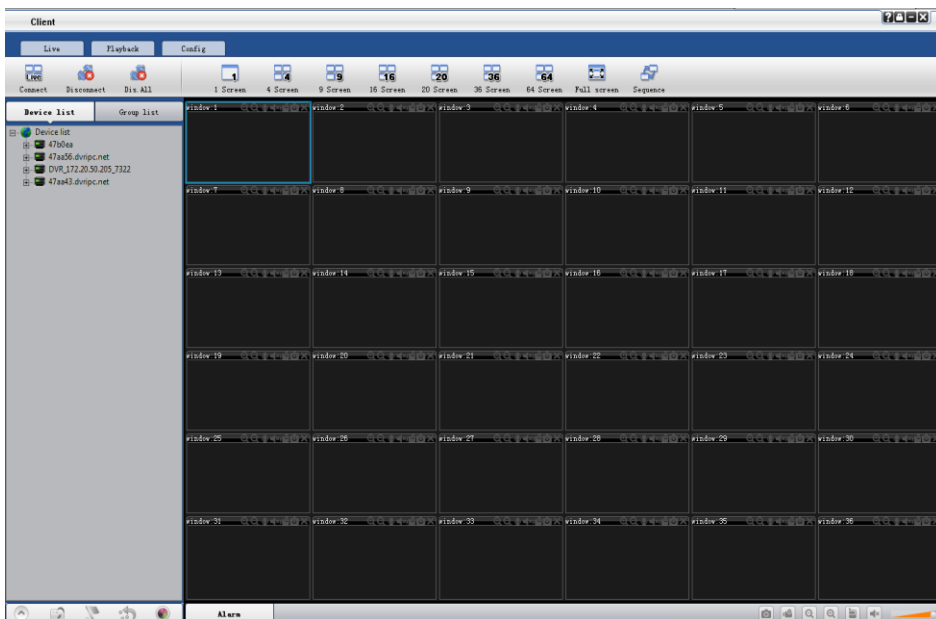
1. Before you install the client software, please close the IE browser , if you had install other version better please close the client.

2. When the install succeed, there will have a desktop shortcuts, double click to run it.



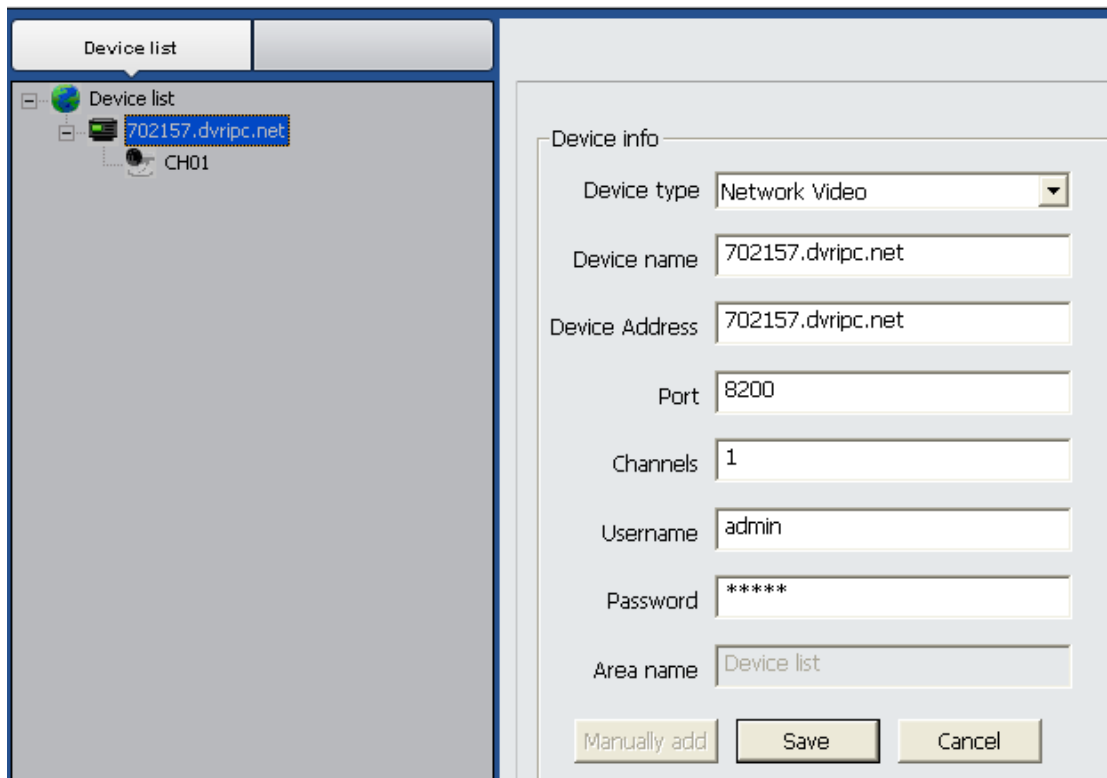
Default username: admin , without password, click the login as Figure shows.

b) Use CMS to connect the IP Camera



1. Use My E-Video domain name

When you add a new device, choose the "Network Video" for the Device type



Device name: the name is display in your Device list, you can enter anything

Device Address: My E-Video domain name of the device

Port: when you use the P2P device you can put in any number

Channels: channels of your device, IP camera is 1

Username: your device username

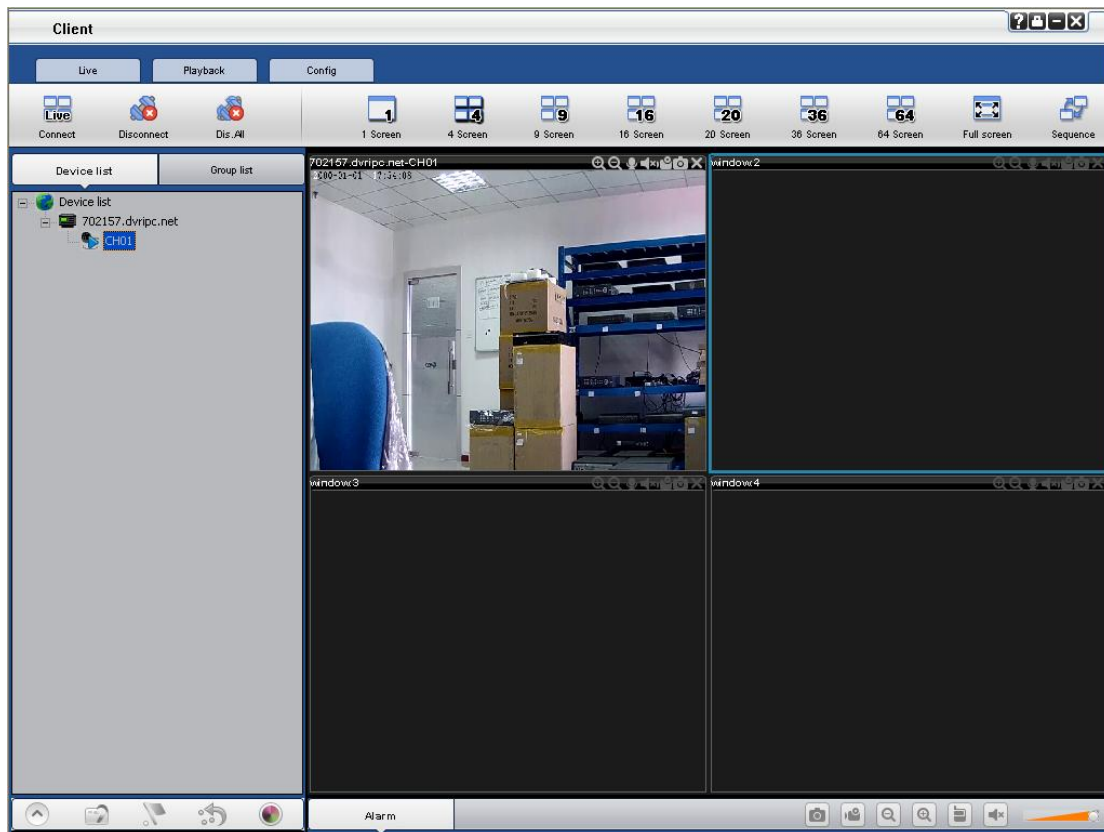
Password: your device password

Click the [Save] button to save the device info. After save succeed, the device name will show in the device list.

Live video

Click the [Live] button to back to the live video , click the [+] button will show the channels of this device, double click will connect.

When connect succeed :



Use My E-Video domain name, just need remember My E-Video domain name , IP camera username and password. Don' t need set port forwarding in router, easy and fast for the user.

b) Smart mobile


Smart mobile support iphone, ipad, Android. Here use android as an example to introduce. Click the "SmartHD P2P" , the display will as the figure shows.



1. Add device:

When you first use this APP or you don' t add the device before, please enter the [Device List] to

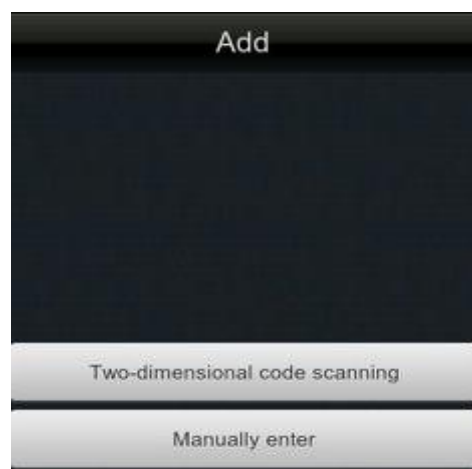
add the device.

1) Click 

Enter the Device List ,click the [Add].



2) Enter the Device List ,click the [Add], there are two ways to add device: Two-dimensional code scanning, Manually enter.



3) Two-dimensional code scanning

Choose two-dimensional code scanning, use the camera of your mobile, scanning the two-dimensional code on the device, you can have the device IP, device port, username and the default password. If the two-dimensional code lost, or you change the device info, you can use the two-dimensional code software to make a new two-dimensional code, the documentation is: device IP|

device port | username | password. For example : 47aa43.dvripc.net|15961|admin|admin.



Scan the two-dimensional code , you can have the device info, the [Device Name] and [Device Channel] need manually enter.

Add		Save
Device Name	<input type="text" value="111"/>	
Device IP	<input type="text" value="47aa43.dvripc.net"/>	
Device Port	<input type="text" value="15961"/>	
UserName	<input type="text" value="admin"/>	
Password	<input type="password" value="....."/>	
Device Channels	<input type="text" value="Auto"/>	

4) Manually enter.

A. Click the [Add], then choose the manually enter to add the device info.

Add		Save
Device Name	<input type="text" value="111"/>	
Device IP	<input type="text" value="47aa43.dvripc.net"/>	
Device Port	<input type="text" value="15961"/>	
UserName	<input type="text" value="admin"/>	
Password	<input type="password" value="....."/>	
Device Channels	<input type="text" value="Auto"/>	

B. Enter the device info

Device name: the name is display in your Device list, you can enter anything

Device Address: My E-Video domain name of the device


Port: Mobile port, you can find this port number in your device setting, when you use the P2P device you can put in any number.

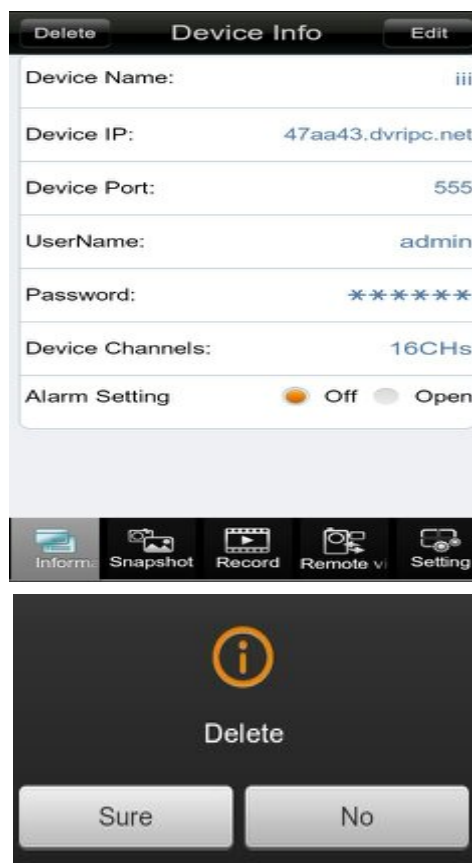
Username: your device username


Password: your device password

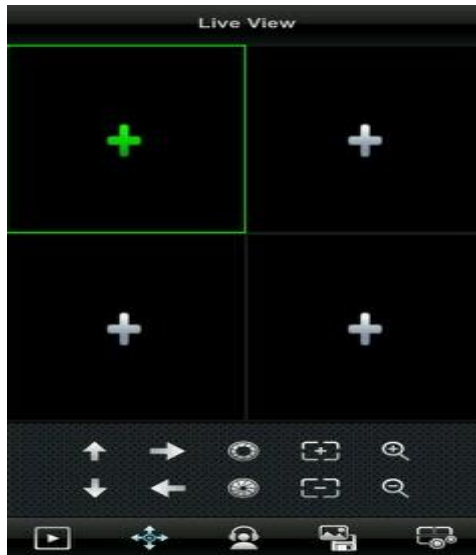
Channels: channels of your device, IP camera is 1. Manually enter or auto


C. Click [Save] to save the info and add the device. After save will return to device list. You can add others or back to live view.

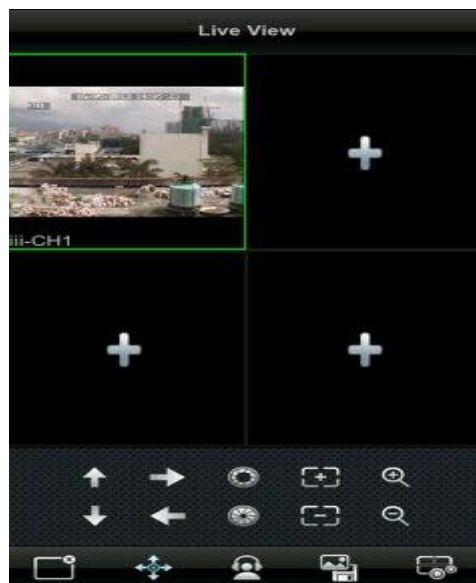
D. Delete the device: click  the right side of the device you want delete. enter to the device info setting, click [Delete], it will pop up asking you to confirm, click [Sure] to delete, [No] not delete.



2. Live View: after add device, click  Live View in main interface, you can see the live view display.



3. Click  will open the device list, you can choose the one you want show, the device will be connecting.



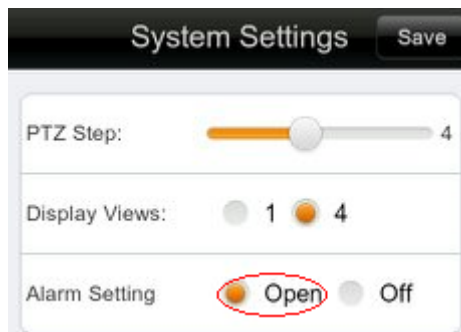
3. Push Video

Push upload video and alarm function, and the industry in the current equipments, will send a message to your phone, click on the information can be directly to watch the video. The following detailed introduction for you using method (android, for example).

Push video means when the device have alarm, will sent a message to the mobile, click the message you can view the live video.

Push video setup:

1. Connect the IP camera with network, make sure the network normal.
2. Enable the IP camera alarm function.
3. Enter the android app "SmartHD P2P" , enter the system settings, enable the alarm setting,save.



4. Enter the device list , add device, two-dimensional code scanning or manually enter. Here use manually enter as an example to introduce.

A screenshot of the 'Add' device form in the SmartHD P2P app. The form has a black header with 'Add' and a 'Save' button. Below the header, there are several input fields: 'Device Name' with the value '111', 'Device IP' with the value '47aa43.dvripc.cn', 'Device Port' with the value '15961', 'UserName' with the value 'admin', 'Password' with masked characters '*****', and 'Device Channels' with a dropdown menu set to 'Auto'.

Device name: the name is display in your Device list, you can enter anything

Device Address: My E-Video domain name or IP address of the device

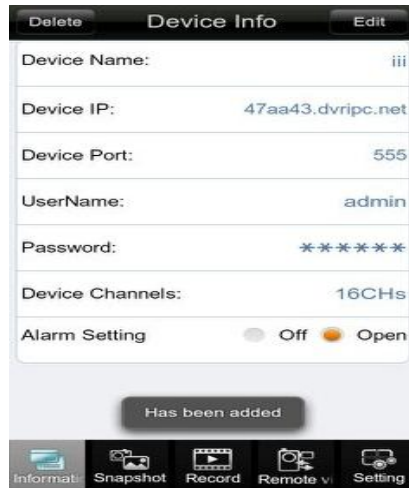
Port:Mobile port, default is 15961, you can find this port number in your device setting, when you use the P2P device you can put in any number.

Username: your device username

Password: your device password

Channels: channels of your device, IP camera is 1. Manually enter or auto

5. Return to main interface, enter to device list, choose the device you add, choose open of [Alarm setting]



After save, will show the Push succeed message, when device have alarm, you can receive alarm message. Click [View] will see the live view.

