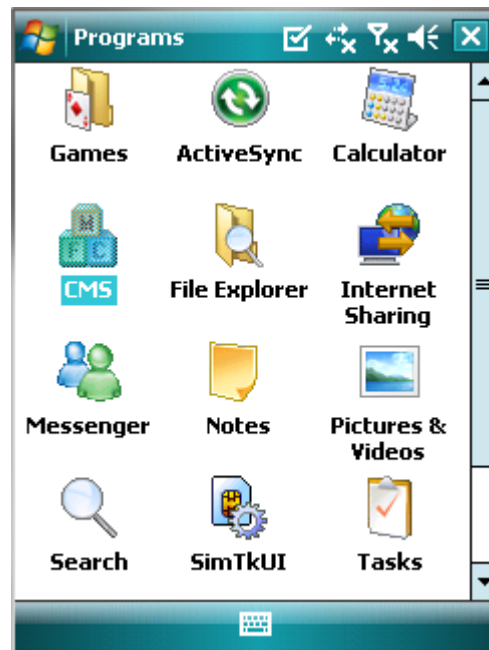


Mobile CMS

User's Manual

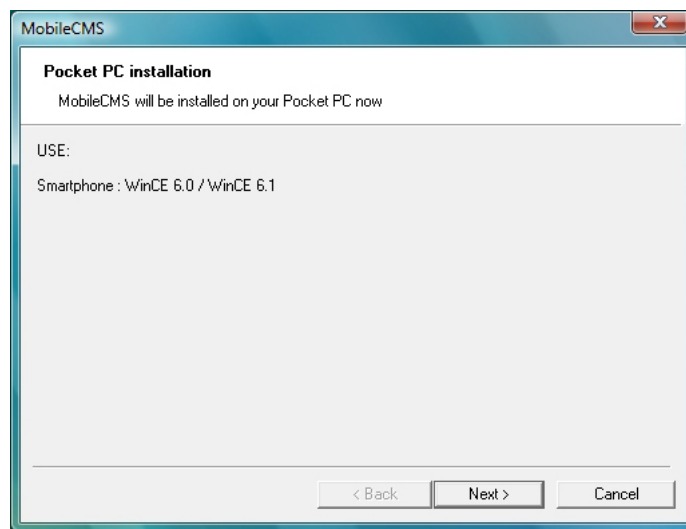


14.1 Requirements

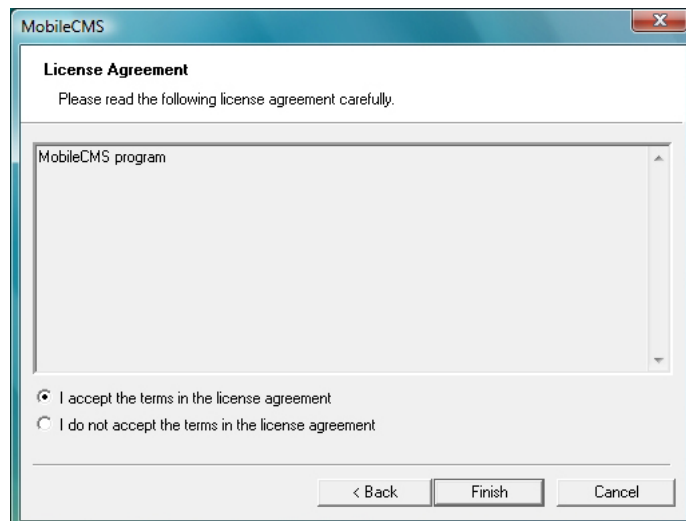
- OS : Windows Mobile 6.1 or higher version.
- Memory : 512Kb or Higher.
- Device : Smartphone
- Network : Available all wireless networking method. I.e. Wi-fi, HSDPA, Wibro.

14.2 Installation

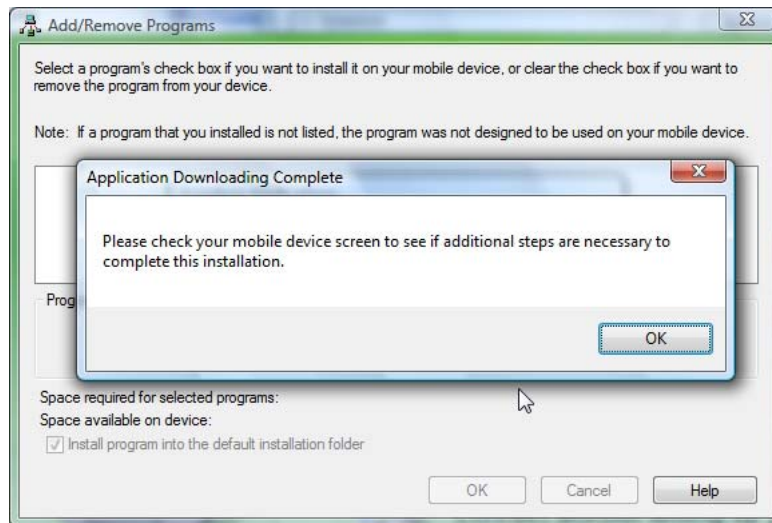
- Prepare ActiveSync program to user's PC.
 - Available download at following link.
 - <http://www.microsoft.com/downloads/details.aspx?FamilyID=9e641c34-6f7f-404d-a04b-dc09f8141141&DisplayLang=en>
 - ActiveSync enable users manage documents, calendars, contact lists and email between their PC and mobile device through a Cradle or a USB connection.
- Connect mobile device to PC then double click "Setup_MobileCOM.exe" to start installation.
- The following screen will appear:



- Click "Next" button.



- Click accepting the license agreement, then click "Finish" button.



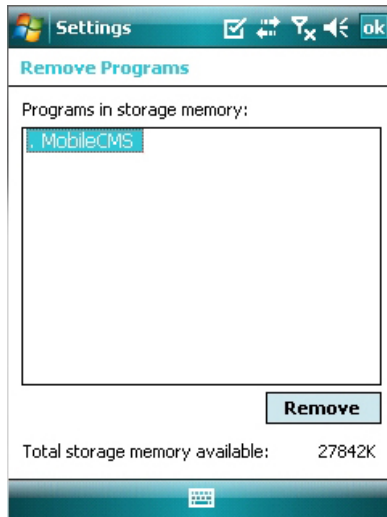
- Installation box will appear
- Click [OK] to start installation.
- When installation completed, following pop-up will appear.
- Click [OK].
- If following message appeared, it has successfully installed.



(Note)

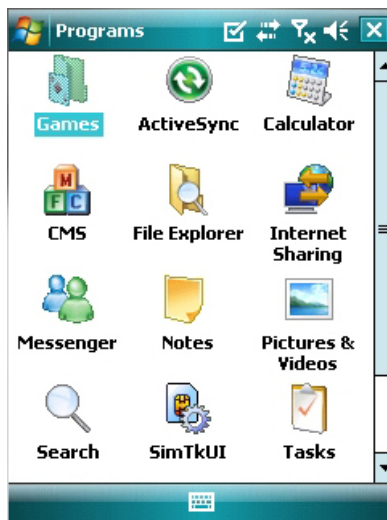
Depending on mobile device, successful installation message may not appear.
Click [OK] when license agreement message appear.

- Move to [Programs] page to check whether CMS has installed.



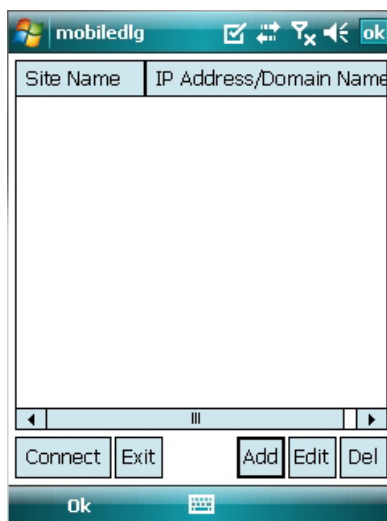
14.3 Site configuration

- Start CMS, following screen will appear.

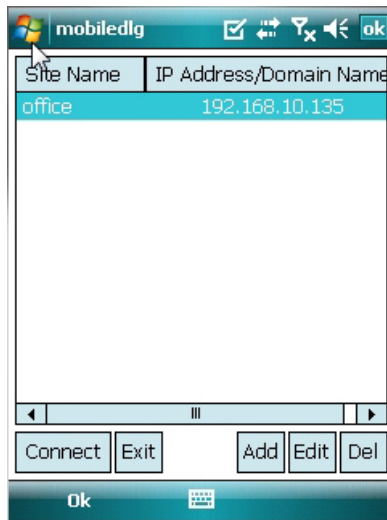


Add

- Click [Add] to appear following screen.

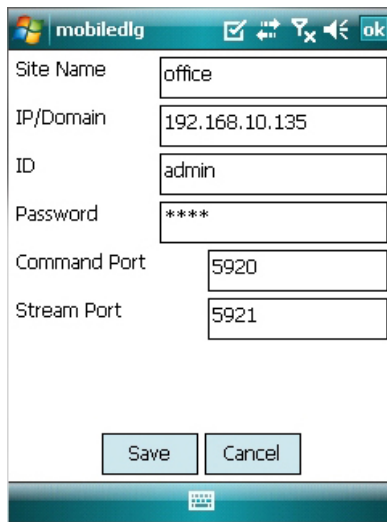


- Fill in correct information.
 - Site Name : Insert the name of site.
 - IP/Domain : Insert the IP address or Domain name of the site.
 - ID : Input the registered ID of the site.
 - Password : Input the password of the registered ID.
 - Command Port : Insert Command Port of the site.
 - Stream Port : Insert Stream Port of the site.
- Click [Save] then following screen will appear with registered site.



Edit

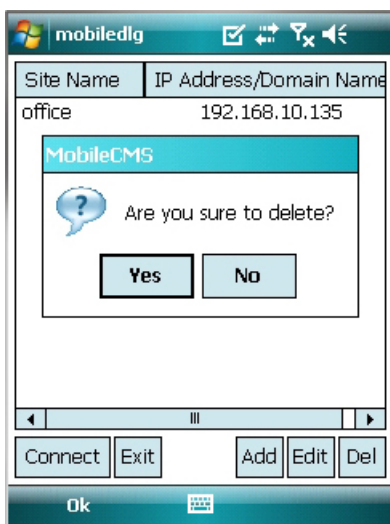
- Select a site and click [Edit] then following screen will appear.



- Correct items then click [Save].

Delete

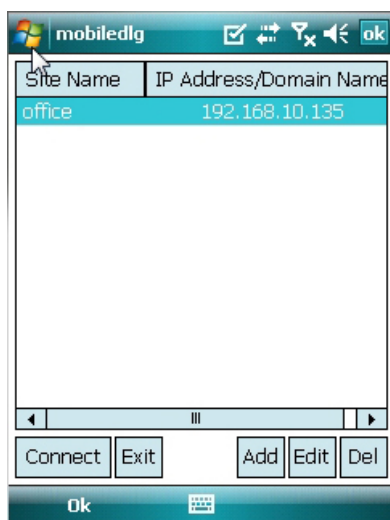
- Select a site and click [Del].
- Confirmation message will pop up.



- Click [Yes] then the site information will be removed.

14.4 Connect

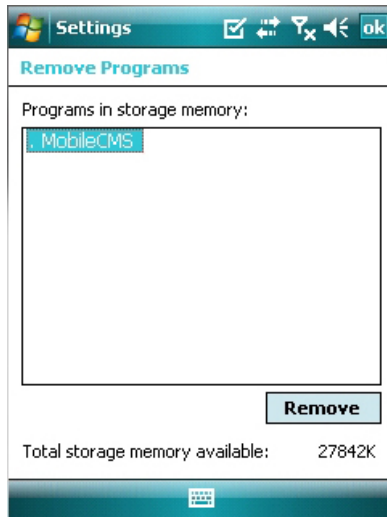
- Select a site then click [Connect].



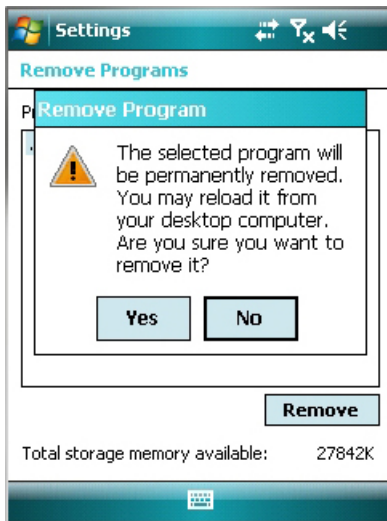
- Live display screen of the site will appear if it is successfully connected.
- Users are able to select a camera by clicking camera button.
- Click [Disconnect] then, live display screen will be closed and Site list box will appear.

14.5 Uninstall

- Move to [Program Menu> System] then click [Remove Programs].
- The currently installed list will show up.



- Choose Mobile CMS on the list and click [Remove].



- Confirmation message will pop up
- Click [Yes] to complete uninstall then program will be removed.