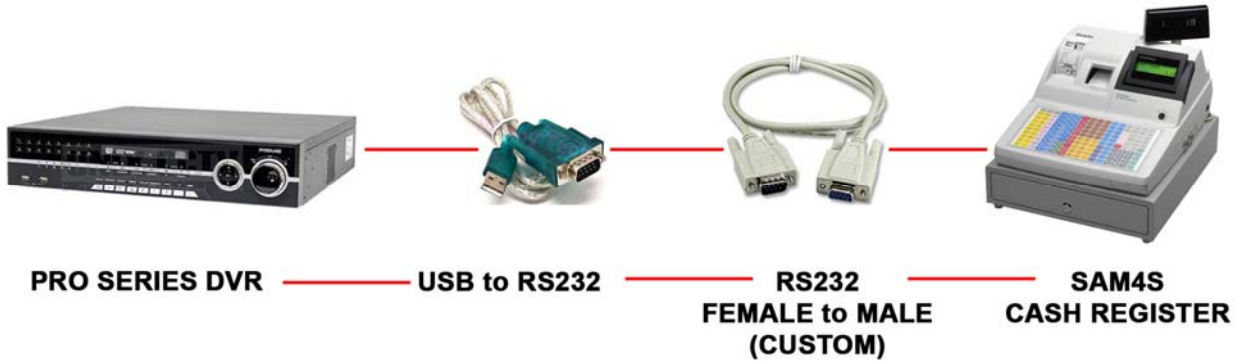
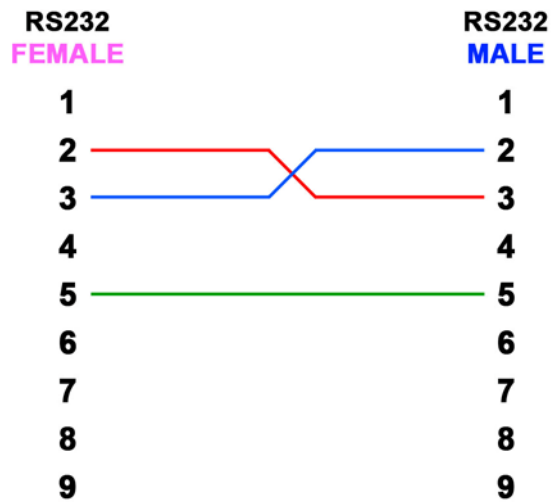


# PRO SERIES POS GUIDE

## WIRE CONNECTION



## RS232 FEMALE to MALE (CUSTOM)



## **PROGRAMMING SAM4S CASH REGISTER**

- 1) Turn the key to S position (Service Mode)
- 2) On the register, do the following:
  - **80 – SBTL – 5 – XTIME – 3 – CASH – CASH** (*Device Funtion = Remote Journal (TVS Interface)*)
  - **80 – SBTL – 11 – XTIME – 8 – CASH – CASH** (*Printer Type = EPSON TM T88-2*)
  - **80 – SBTL – 12 – XTIME – 0 – CASH – CASH** (*Display Type = EPSON*)
- 3) By default, the following information should be:
  - BAUDRATE = 9600
  - PARITY = NONE
  - DATA BIT = 8
  - STOP BIT = 1

If the above information is not in default, and you want to change to default, do the following:

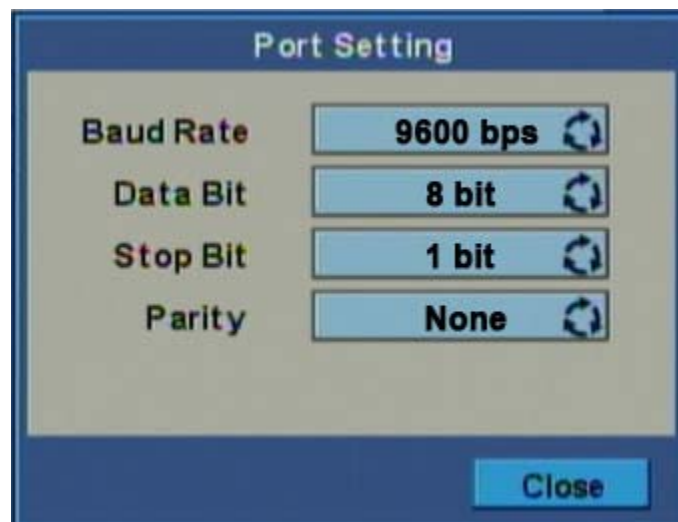
- **80 – SBTL – 1 – XTIME – 0 – CASH – CASH** (*Baud Rate = 9600*)
- **80 – SBTL – 2 – XTIME – 0 – CASH – CASH** (*Parity = NONE*)
- **80 – SBTL – 3 – XTIME – 0 – CASH – CASH** (*Data Bits = 8*)
- **80 – SBTL – 4 – XTIME – 0 – CASH – CASH** (*Stop Bits = 1*)

- 4) Once you finish, turn the key to REG position

***For more detail information, please refer the page 4 and 5.***

## PRO SERIES POS SETTING

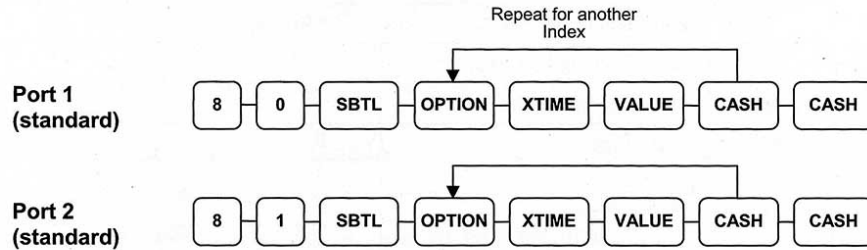
- 1) Open DVR MENU (*ID: admin, PW: 1111*)
- 2) Go to **DEVICES – SERIAL IN**
  - **USE** = Must be checked
  - **TITLE** = Type any name
  - **PORT** = Enter the Cash Register information
  - **PATTERN** = Edit the information that will display when doing transaction
  - **AUTO** = Must be checked
  - **OSD** = Choose BOTH to display POS OSD on LIVE and PLAYBACK



## RS-232 Communication Option Programs

You must define the device(s) attached to the RS-232C communications ports, and the options for the device(s).

1. Turn the control lock to the **S** position.
2. Enter **8 0** (enter **8 1** to program the second port) and press the **SBTL** key.
3. Refer to the chart RS-232C option chart that follows and enter the number of the option (N1) you wish to program and press the **X/TIME** key.
4. Enter the value (N2) that represents your selection and press the **CASH** key.
5. Repeat from step 2 for any additional options you wish to program.
6. Press **CASH** to exit the program.



**RS-232 Option Chart**

Address	Option	Value	Selection
1	Baud Rate	0	9600 BPS
		1	1200 BPS
		2	2400 BPS
		3	4800 BPS
		4	19200 BPS
2	Parity	0	NONE
		1	ODD
		2	EVEN
3	Data Bits	0	8 BITS
		1	7 BITS
4	Stop Bits	0	1 BIT
		1	2 BIT

Address	Option	Value	Selection
5	Device Function	0	NONE
		1	PC
		2	SCALE
		3	Remote Journal (TVS Interface)
		4	Remote Printer
		5	EFT Device
		6	Scanner
		7	COIN
		8	Berg Liquor Dispenser
		9	Pole Display
		10	PDC (Requires V6.1 or later)
6	Initial Feeding Line KP	0 - 20	
7	End Feeding Line KP	0 - 20	
8	Initial Feeding Line Slip	0 - 20	
9	Print Line On Guest Check	0 - 50	
10	Scale Type	0	NCI
		1	CAS
11	Printer Type	0	NONE
		1	SRP-100 / SAM4S ELLIX10
		2	SRP-270/SRP-500
		3	SRP-300
		4	SRP-350 SAM4s ELLIX20
		5	CITIZEN 3550
		6	CITIZEN 810
		7	CITIZEN 230
		8	EPSON TM T88-2
		9	EPSON U200
		10	EPSON U295
		11	EPSON U300
		12	EPSON U325
		13	EPSON U375
		14	STAR SP-200
		15	STAR SP-298
		16	STAR SP-300
17	STAR TSP-200		
12	Display Type	0	EPSON
		1	ICD

**Note:** If both ports are set to the same device, Port 1 runs first. For example, if you wish to use Port 2 for PC, Port 1 must be set to another device, or None.