



Network Client Software ISNET
User's Manual



Content

Chapter 1

Introduction to ISNET.....	1-1
1. What is ISNET?	1-1
2. System Requirements	1-1
3. Main Functions of ISNET.....	1-2

Chapter 2

How to set ISNET	2-0
0. Program Run	2-0
1. Configuration	2-1
(1) DVR Configuration	2-1
(2) Event Configuration	2-7
(3) Favorite Configuration	2-9
(4) Rotation Configuration	2-18
(5) User Configuration	2-22
(6) User DVR Assignment	2-23
(7) User Favorite Assignment	2-24
(8) User Rotation Assignment	2-24
(9) Multi-Monitor Configuration	2-25
(10) Image Options Configuration	2-27
(11) Option Configuration	2-28
(12) ISNET Log	2-31

Chapter 3

Using ISNET	3-1
1. Starting the Program	3-1
(1) Login	3-1
(2) DVR / User Setup.....	3-1
2. Live View	3-2
(1) Real-time Monitoring.....	3-2
(2) Play Audio.....	3-4
(3) Camera Control	3-4
(4) Message Transfer	3-7
(5) Play / Pause	3-8
3. Playback.....	3-9
(1) File Search.....	3-9
4. Control	3-17
(1) System Information View.....	3-17
(2) Remote Record Setup.....	3-18
(3) Remote Camera Setup.....	3-19
(4) Remote Event Setup.....	3-20
(5) Remote Screen Display Setup	3-21
(6) Remote System Setup.....	3-22
(7) Remote Schedule Setup.....	3-24
(8) Configuration Load/Save	3-25
(9) Use Log Information	3-26
5. Event	3-28
(1) Event Action.....	3-28
(2) Event Information View	3-28
(3) Event View	3-30
(4) AAC Server Setup	3-30
6. Other Instructions for use.....	3-31
(1) Print.....	3-31
(2) Snapshot	3-32
(3) Rotation.....	3-32
(4) Using Login/Logout Window.....	3-34
(5) Split	3-34
(6) About.....	3-35
(7) Maximize	3-35
(8) Minimize	3-35

Introduction to ISNET

1. What is ISNET?

This software, ISNET, is a program to control a number of DVRs integrately, which is suitable for the places where integrate, operate and manage several DVRs, including flight control, situation room and operating room.

ISNET provides various functions: it can check and control the state of DVR, camera and sensor in real-time via internet network, search a file recorded to replay, perform several actions on the event occurred in DVR, monitoring several DVRs regularly at the same time, support multi-monitor to monitor up to 75 cameras simultaneously.

2. System Requirements

Basic requirements	<ul style="list-style-type: none">- Microsoft Windows 2000/XP- Pentium IV 1.9GHz or more- More than 512MB Memory- More than 1GB free Hard Disk space- 1 AGP card (1024*768, more than 24-bit color)
Recommended requirements	<ul style="list-style-type: none">- Microsoft Windows XP- Microsoft DirectX 9.0- More than Pentium IV 3 GHz supporting hyper-threading function- More than 1GB Memory- More than 4GB free Hard Disk space- 3 Multi-monitors- 4x AGP VGA card supporting multi-monitor (1280*1024, 32-bit color)- PCI VGA card supporting multi-monitor (1280*1024, 32-bit color)

3. Main Functions of ISNET


Main Functions	Description
User Management	DVR, Favorite, Rotation assignment by user
Various Settings	Provides various setting functions, such as DVR, Event, Favorite, Rotation, Image Options.
Print	DVR image print
Snapshot	Stores images automatically/manually.
Rotation	Configures various View-Points; Periodical real-time monitoring
Window mode	Login, Logout, Lock mode
Various function modes	Real-time monitoring, Search & Replay, Control, Event
Real-time monitoring mode	DVR, Favorite, E-Map, PTZ, Voice, Message
Search & Replay mode	Remote File, Local File, Search Date/Time, Search Event & Replay
Control mode	DVR Setting, Remote control, View Log & Save
Event mode	View Event Screen, Beep, Run External Program, Event Log
E-Map	Camera, Sensor State, E-Map Link, View 1-Screen
Split mode	1, 4, 9, 16, 25 Split modes
Multi-monitor	Supports 3 multi-monitors (up to 75 screens)
DVR, Camera State display	DVR Log-in, Log-out State, Camera Input, Motion Detection, Recording State
DVR Automatic Log-in	Automatically recovers connection in case of disconnection due to Network error, DVR error.
Update	To be updated to an enhanced version of ISNET via internet
Joystick	PTZ Control by Joystick

Chapter



2

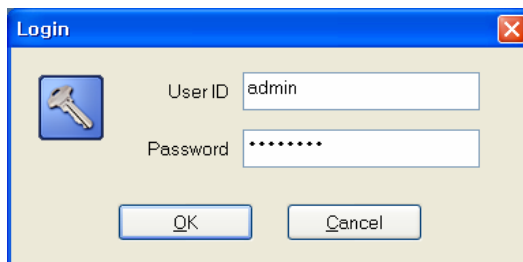
How to set ISNET





0. Program Run

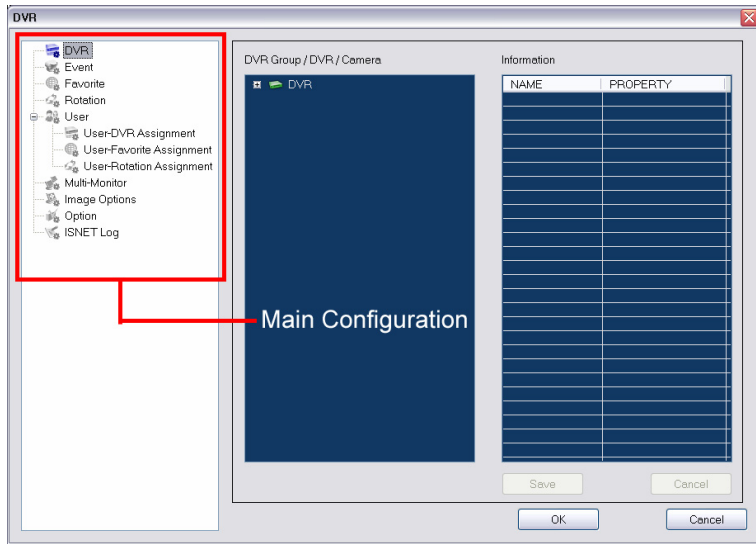
Double-click  to run ISNET program.



-  Login/Logout
- ① Select the **[Login/Logout ()]** button.
 - ② Enter User ID/Password. (Default values are User ID: admin, Password: 00000000.)



- ③ Once you log in to ISNET, you can use **[Config ()]**, **[Rotation ()]**, **[Login/Logout ()]** buttons.
- ④ Click **[Config ()]** button to set ISNET environment.



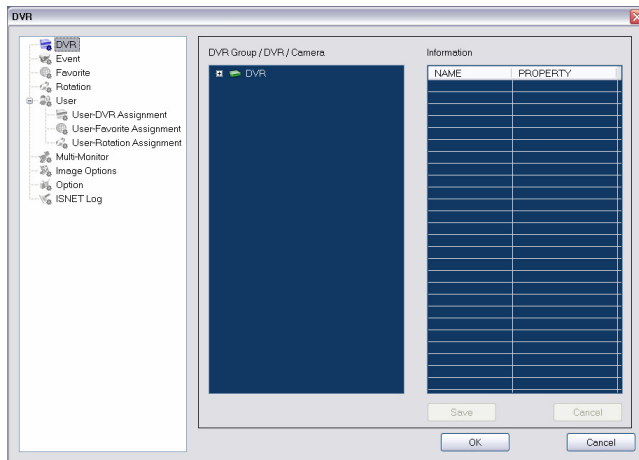
1. Configuration


(1) DVR Configuration

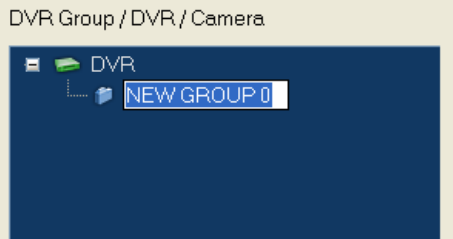
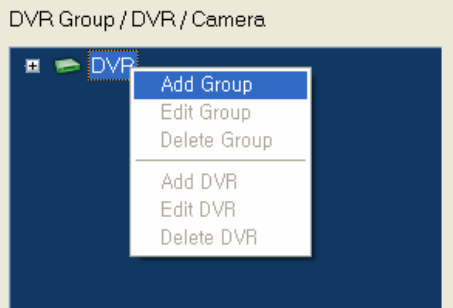
Adds/Deletes/Edits DVR to be managed by ISNET.

(a) Add DVR

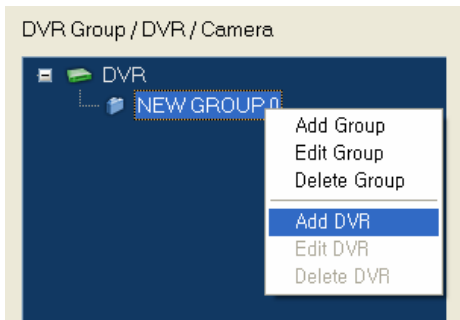
- ① Select DVR from [Main Configuration] tree.



- ② Select DVR () from [DVR Group / DVR / Camera] tree.
- ③ Click the right mouse button for a pop-up, and select <Add Group> and enter Group Name from the pop-up menu (hereinafter called the “Pop-up Menu”).



- ④ Select Group item and choose <Add DVR> from the Pop-up Menu



- ⑤ Enter Name, IP Address/Host Name, Login ID, Password, Port, Description in the **[Information]** list and click the **[Save]** button.

DVR Group / DVR / Camera

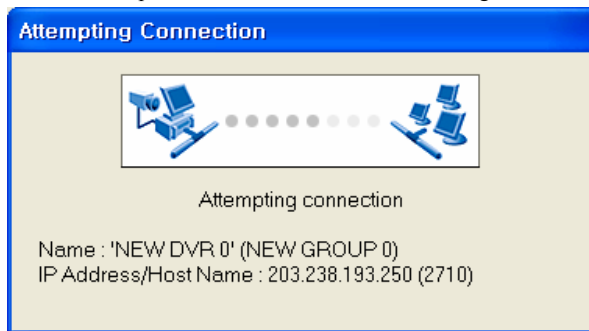
NAME	PROPERTY
Name	NEW DVR 0
DVR Group	NEW GROUP 0
IP Address/Host Name	
MAC Address	N/A
Login ID	
Password	*****
Port	2710
Broadcast	No
Description	
# of Sensor	0

 **Note**

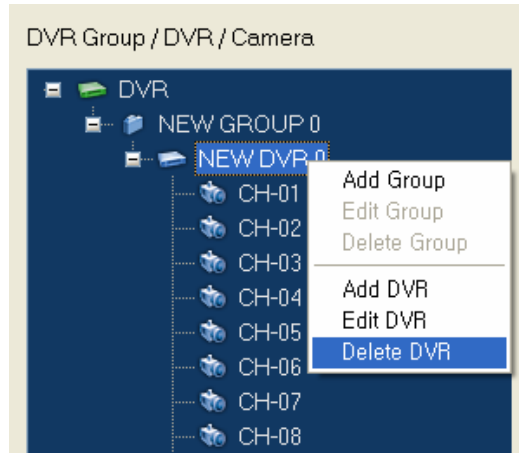
- Do not use special character for DVR Name.
- If you use special character for DVR Name, there may be error occurred in some file creation function.

Auto Login	Yes	When a user logs in the ISNET, it will be automatically connected.
	No	It won't be connected until the ISNET user logs in manually.
Backup Event Log	Automatic	If connected to DVR, Event Log will be automatically backed up.
	Manual	DVR Event Log is backed up by manual only.
Save Event to DB	Yes	DVR Event is saved into the ISNET Event DB.
	No	DVR Event is not saved into the ISNET Event DB.

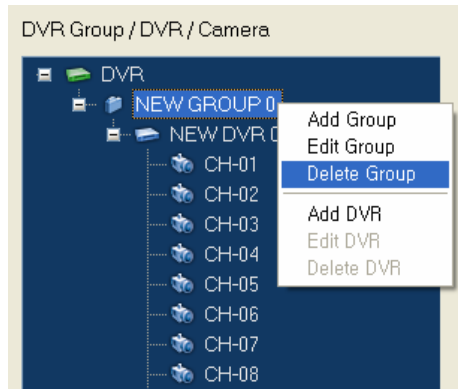
⑥ Do attempt to connect to DVR as the following:



If connected to DVR, then the MAC Address of DVR and the number of Sensors in the **[Information]** list, and Camera items of DVR connected to the **[DVR Group / DVR / Camera]** tree will be created.



- ② To delete all DVRs in the Group, select Group item and choose **<Delete Group>** from the Pop-up Menu.

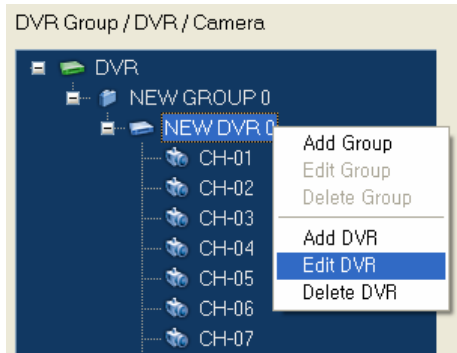


 **Note**

- If you delete DVR, it will be deleted from all Favorites and Rotations referring to DVR.
- Be careful with deleting, because the DVR information deleted cannot be recovered.

(c) Edit DVR

- ① Select the DVR item you want to change the information for DVR connection, and then choose **<Edit DVR>** from the Pop-up Menu.



- ② Reset the item desired to edit in the **[Information]** list.

Information	
NAME	PROPERTY
Name	NEW DVR 0
DVR Group	NEW GROUP 0
IP Address/Host N	203.238.193.250
MAC Address	00-03-4E-20-00-69
Login ID	admin
Password	*****
Port	2710
Broadcast	No
Description	
# of Sensor	16

- ③ If you press the **[Save]** button, connecting to DVR is attempted in the same process of registration by using the information changed. When DVR is connected, the information changed will be reflected to create Camera items and to display MAC Address and the number of Sensors in the **[Information]** list.
- ④ If you click the **[Cancel]** button, the information to change won't be applied.

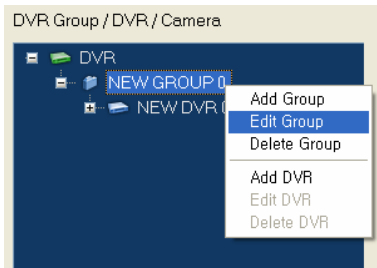


Note

- If you change DVR information, all of Favorites and Rotations referring to the DVR information will be changed.

(d) Edit Group

- ① To change Group Name, select Group item and choose **<Edit Group>** from the Pop-up Menu.



- ② Enter Group Name.
- ③ All the Group information of DVR under the Group changed will be changed.
- ④ To move the DVR Group registered, select DVR and move to the desired Group item by pressing and holding the left mouse button, and then release it (hereinafter referred to as **“Drag-n-Drop”**).



Note

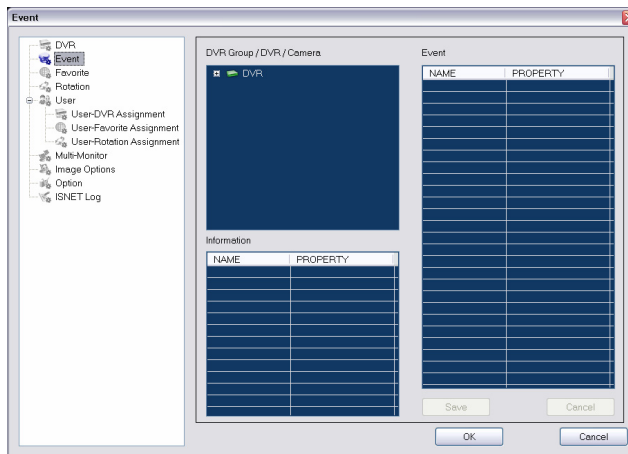
- Auto Login, Backup Event Log, and Save Event Log to DB properties of all DVRs belonging to Group may also be changeable.


(2) Event Configuration

Setting ISNET action to DVR Event.

(a) Setting Event of DVR belonging to Group

Sets Events of All DVRs included in Group in the same way.



- ① Select Event() from the **[Main Configuration]** tree.
- ② Select the Group item to set Event from the **[DVR Group / DVR / Camera]** tree.
- ③ Select **<Setup Event>** from the Pop-up Menu.



- ④ Set and enter Sensor/Motion/Camera Loss/System Warning in the **[Event]** list and click the **[Save]** button.
 - a. Event View: Option to set up whether to output the appropriate image when Event occurs
(On/Off)
 - b. Duration: The duration of image output when Event occurs
 - c. Beep: Option to set up whether a warning beep will sound or not when Event occurs
(On/Off)
 - d. Linked Exe.: Executes the program being linked when Event occurs.
 - e. Exe. Parameters: Command Line Parameters of the program being linked when Event occurs

(b) DVR Event Setup

- ① Select Event from the **[Main Configuration]** tree.
- ② Select DVR item to set Event from the **[DVR Group / DVR / Camera]** tree.
- ③ Select **<Setup Event>** from the Pop-up Menu.



- ④ The details of setup are the same as (a) Setting Event of DVR belonging to Group.



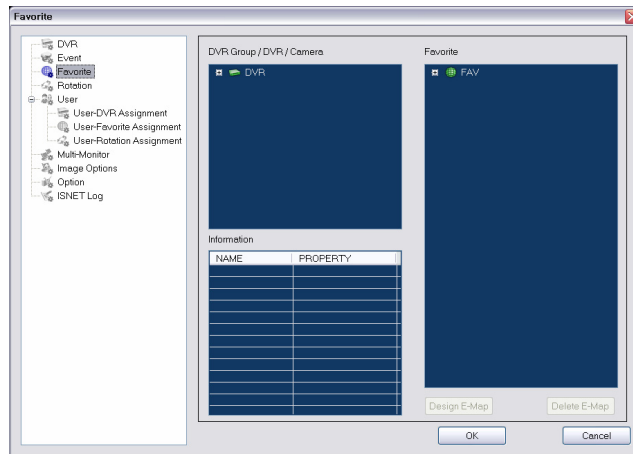
Note

- To view Event screen by using the Event Live View setup, Duration value should be set to more than 0, while Event Screen to 'Use' for Multi-Monitor setup.
- If you specify Duration as too short, the image of Event Live View may not be displayed normally.
- Event Live View will be transferred to network and displayed, so there may be a time delay.
- In case of Motion Event, Event image will be displayed in 1-screen mode.

- For Sensor, Camera Loss, System Warning, all Cameras are displayed with Event image.
- When changing Event setup to Group, if each DVR belonging to Group has a different setting value, the value of item in the **[Event]** list will not be displayed.
- Since Event Setup is based on the MAC Address, it will be set with the same value in case the same DVR is registered with other name.
- If Event is not set up from the **[Main Configuration]** tree, Event will not work.
Event works only in the DVR logged in.

(3) Favorite Configuration

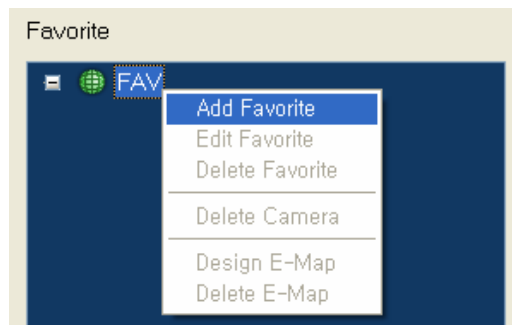
Configures Favorite and designs E-Map.

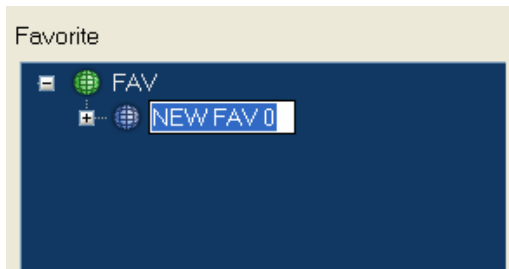


(a) Add Favorite

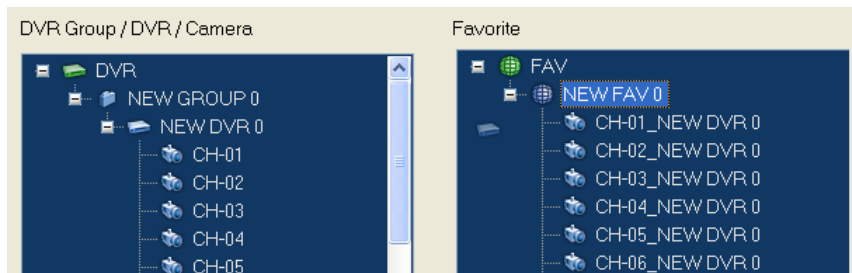
- ① Select Favorite (🌐) from the **[Main Configuration]** tree.
- ② Select FAV item from the **[Favorite]** tree and choose **<Add Favorite>** from the Pop-up Menu. Enter the Favorite Name created.

Camera items from 1 to 25 will be created under the Favorite item created.





- ③ Select DVR or Camera item you want to configure Favorite from the **[DVR Group / DVR / Camera]** tree.
- ④ Move the DVR or Camera item selected to the Camera number on the **[Favorite]** tree by Drag-n-Drop.



- ⑤ The Camera item of Favorite will be changed to Camera Index and DVR Name.
- ⑥ Configure Camera items of Favorite from several DVRs repeatedly.

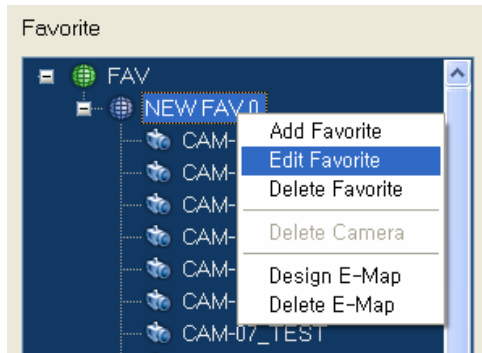


Note

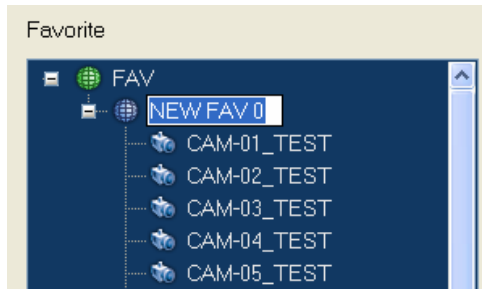
- For Favorite's Camera item, the same Camera cannot be configured in multiple items.
- Favorite's Camera item consists of the MAC Address of DVR and Camera Index. Therefore, even in case the same DVR is registered in multiple numbers, it will be recognized as the same Camera if the MAC Address of DVR and Camera Index are the same.
- If you configure the same Camera in Favorite, the Camera information set previously will be deleted.

(b) Edit Favorite

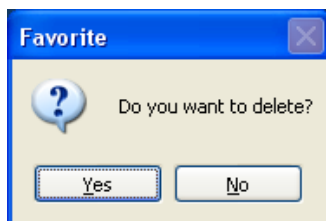
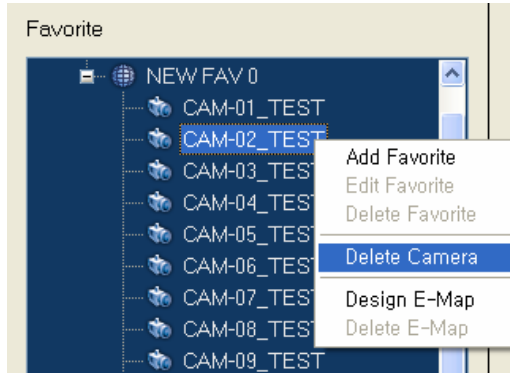
- ① Select Favorite item desired to edit and choose **<Edit Favorite>** from the Pop-up Menu.



Set Favorite Name.

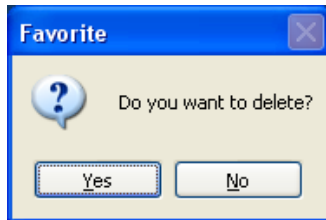
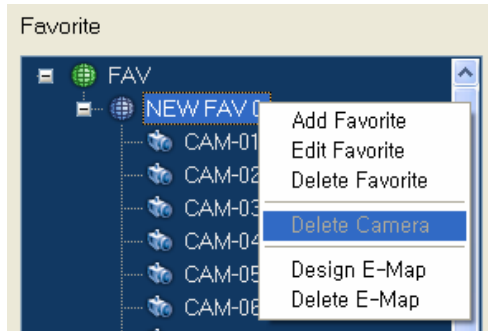


- ② To delete the Camera item set from Favorite, select Camera item and enter Delete key or select **<Delete Camera>** from the Pop-up Menu.



If you click **[Yes]**, then the Camera selected will be deleted.

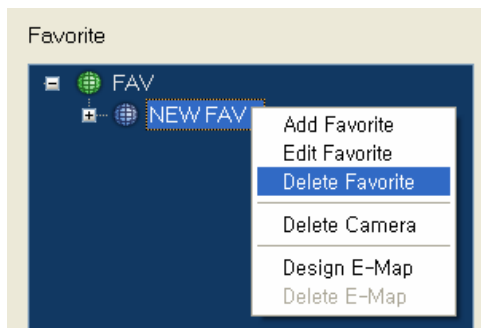
- ③ To delete all Cameras set in Favorite, select Favorite item and enter Delete key or select **<Delete Camera>** from the Pop-up Menu.



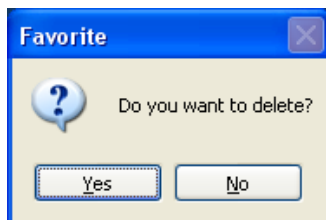
If you click [Yes], then all Cameras configured in Favorite will be deleted.

(c) Delete Favorite

- ① Select Favorite item you want to delete and choose <Delete Favorite> from the Pop-up Menu.

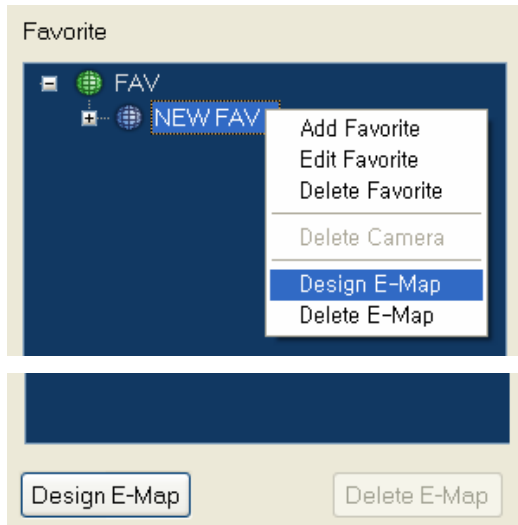


- ② If you click [Yes], then Favorite will be deleted.

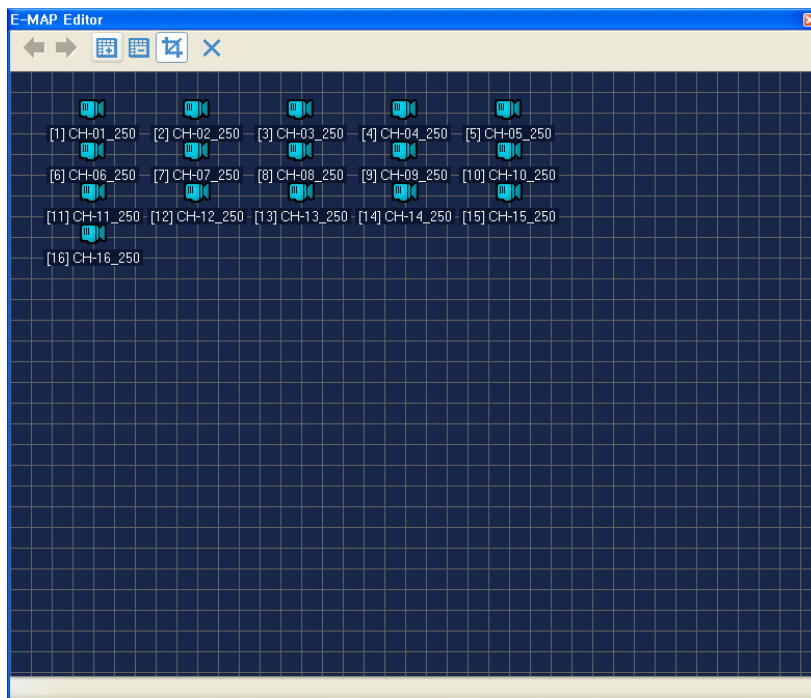


(d) Design E-Map

- ① E-Map can be designed from Favorite item.
To design E-Map, select Favorite item and choose <Design E-Map> from the Pop-up Menu or select the [Design E-Map] button.



② The Camera registered in Favorite item is displayed on the “E-Map Editor” as an icon.









③ Click on the [Load E-Map Image ()] button to select a picture to be used in E-Map.



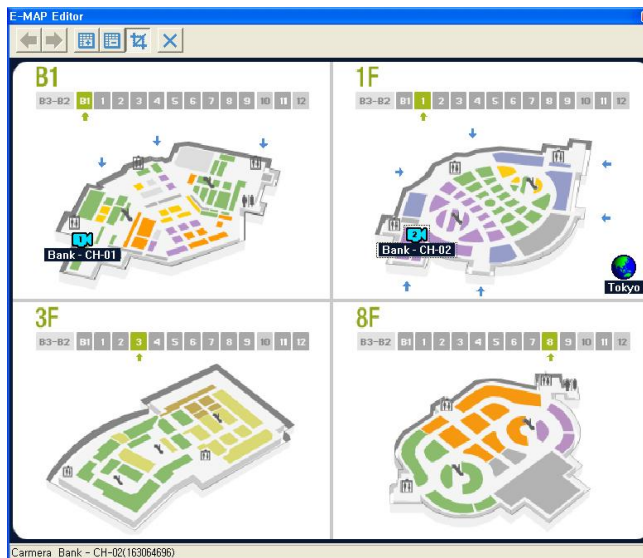
Note

.- The recommended size of image used in E-Map is 714 pixels wide and 486 pixels high (714x486).

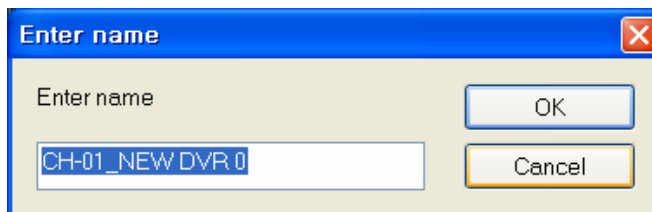
④ E-Map icon functions

Previous E-Map		Moves to the previous E-Map screen linked
Next E-Map		Moves to the next E-Map screen linked
Load E-Map Image		Loading E-Map image
Delete E-Map Image		Deletes E-Map image
Scaling		Automatic image size control
Close		Closes the E-Map Editor

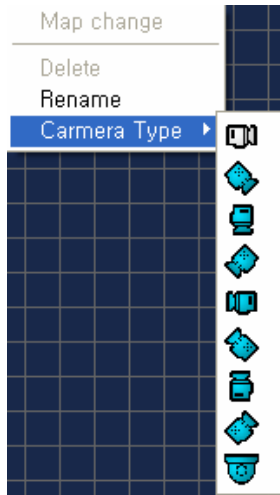
- ⑤ Select Camera icon from the “E-Map Editor” to move to the location desired to be set on E-Map.



- ⑥ Select Camera icon and choose <Rename> from the Pop-up Menu to change Camera Name.



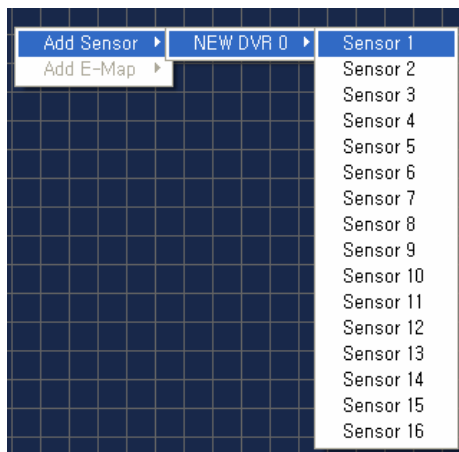
-
- ⑦ Select Camera icon and choose <Camera Type> from the Pop-up Menu to move Camera direction or change to the Dome Camera icon.



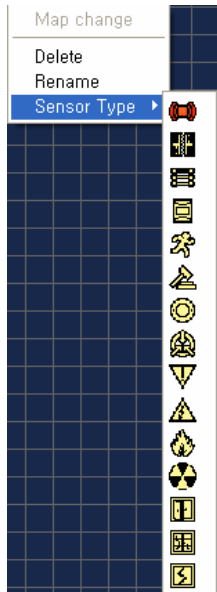
- ⑧ If you select Camera icon, then DVR Name connected to the Camera selected, Camera No. and Camera Name changed will be displayed on the Status Bar at bottom of screen.

(e) Add Sensor on E-Map

- ① In the “E-Map Editor”, select <Add Sensor> from the Pop-up Menu.




- ② Select DVR Name and Sensor No. to add Sensor.
- ③ Select Sensor icon from the “E-Map Editor” to move it by Drag-n-Drop
- ④ Select Sensor icon and choose <Rename> from the Pop-up Menu to change Sensor Name.
- ⑤ Select Sensor icon and choose <Sensor Type> from the Pop-up Menu to change Sensor icon.

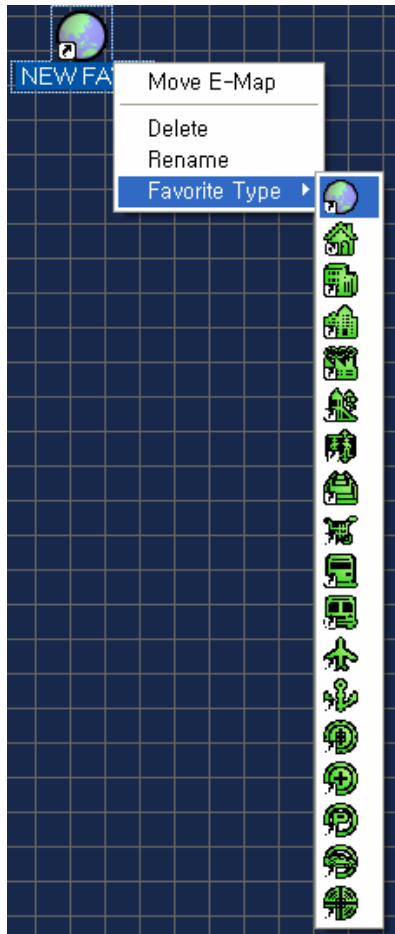




Note

- Even if you change Camera, Sensor, E-Map Name from the E-Map, Camera Name of DVR or Camera Name of Favorite will not be changed.


(f) Add other E-Map links on E-Map

- ① In the “E-Map Editor”, select <Add E-Map> from the Pop-up Menu.
- ② E-Map icon () linked will be created.
- ③ Double click on the E-Map icon or select <Move E-Map> from the Pop-up Menu to move to the appropriate E-Map.
- ④ Select E-Map icon and choose <Favorite Type> to change the E-Map icon.



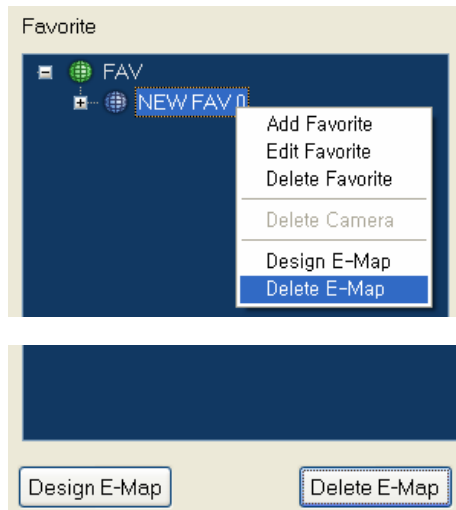
- ⑤ You can move to previous/next E-Map by using [Previous E-Map ()], [Next E-Map ()] buttons.



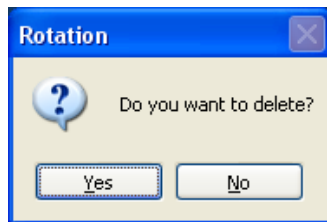
- ⑥ Select the E-Map icon and choose <Rename> from the Pop-up Menu to change the Name of E-Map.
- ⑦ Select the E-Map icon and choose <Delete> from the Pop-up Menu to delete.
- ⑧ Save the setup and close by clicking the [Close ()] button.

(g) Delete E-Map

- ① Select **<Delete E-Map>** from the Pop-up Menu of Favorite item or choose the **[Delete E-Map]** button.



- ② Click **[Yes]** from a confirmation message to delete E-Map information.

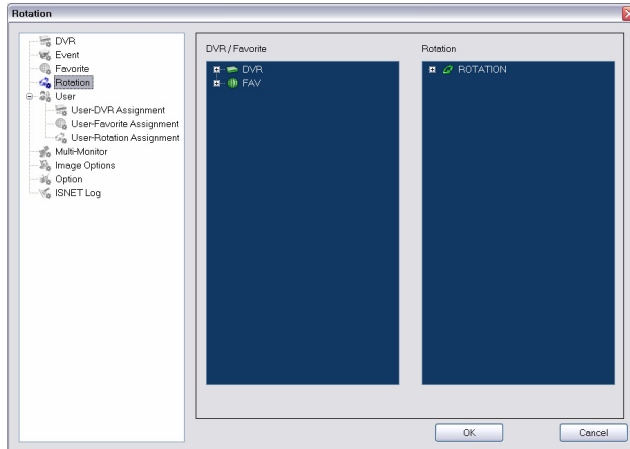


Note


- *[Delete E-Map] function is to delete the image using E-Map only, so Favorite configuration or Camera, Sensor; the location information of E-Map icon linked may not be deleted.*
- *Camera icon cannot be deleted from the "E-Map Editor".*

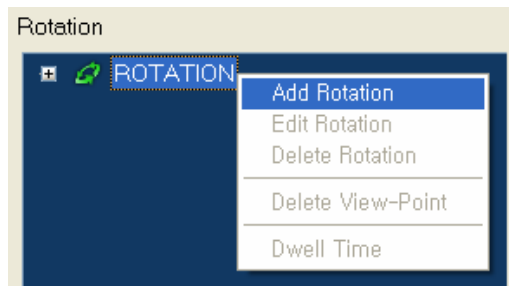
(4) Rotation Configuration

Setting Rotation to be monitored regularly.

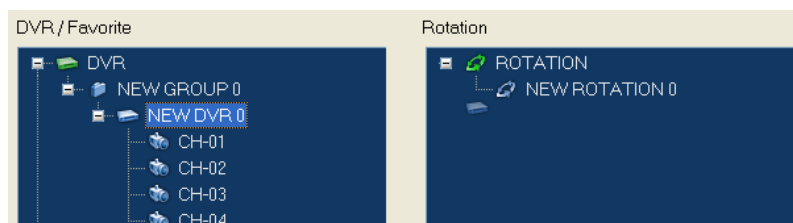


(a) Add Rotation

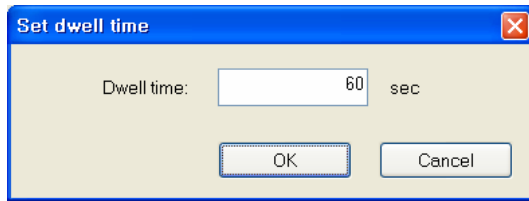
- ① Select Rotation () from the **[Main Configuration]** tree.
- ② Select Rotation item from the **[Rotation]** tree, choose **<Add Rotation>** from the Pop-up menu, and then enter Rotation Name.



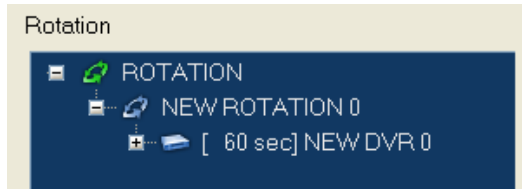
- ③ At the **[DVR / Favorite]** tree, configure View Point to be used for Rotation. View Point can consist of the entire screen of DVR, 1 Camera screen of DVR and the entire screen of FAV. (You can configure any split mode by using Favorite setup.)
Select View Point item (**DVR, Camera, Favorite**) and move to Rotation item of **[Rotation]** tree.



- ④ Enter the time to pause View Point image in **“Set dwell time”**.



- ⑤ When View Point is configured, Dwell time and View Point configuration will be displayed.

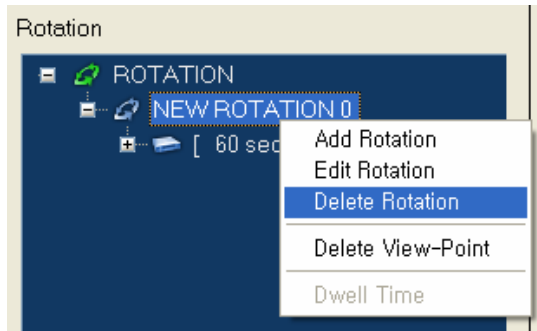


Note

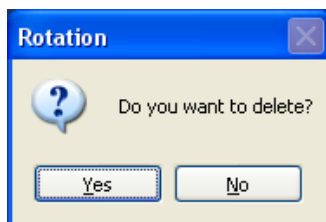
- 1-Camera View Point configuration is applied only when a Camera is selected from the [DVR] tree.
- View Point can be configured in any split mode with several DVR Cameras by using Favorite.
- The order of View Point can be changed depending on the location of Drag-n-Drop.
- If Dwell time is set too short, View Point image may not be output properly.

(b) Delete Rotation

- ① Select Rotation item and choose **<Delete Rotation>** from the Pop-up Menu.

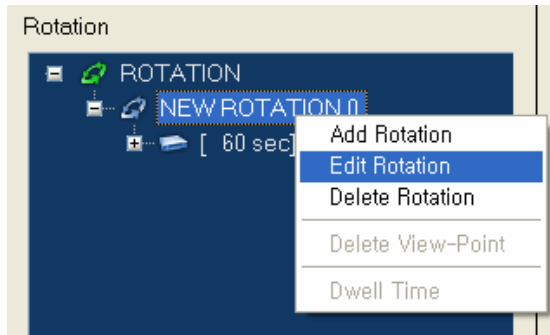


- ② Click [Yes] to delete Rotation item.



(c) Edit Rotation Name

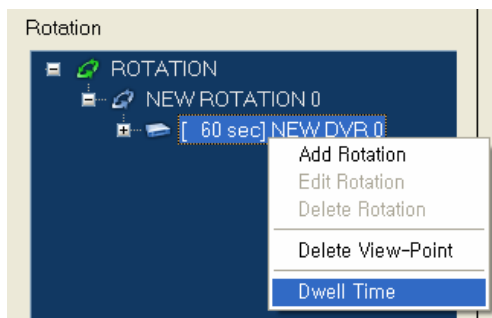
- ① Select Rotation item and choose **<Edit Rotation>** from the Pop-up Menu.



- ② Enter Rotation Name.

(d) Edit Dwell Time of View Point

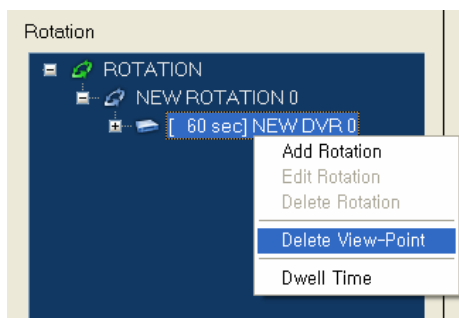
- ① Select View Point from which you want to change Dwell Time and choose **<Dwell Time>** from the Pop-up Menu.



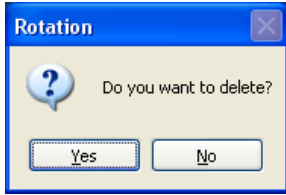
- ② In the "Set dwell time" menu, enter the time desired to be changed to.
- ③ The time of View Point item will be changed.

(e) Delete View Point

- ① Select View Point and choose **<Delete View-Point>** from the Pop-up Menu or enter Delete key.

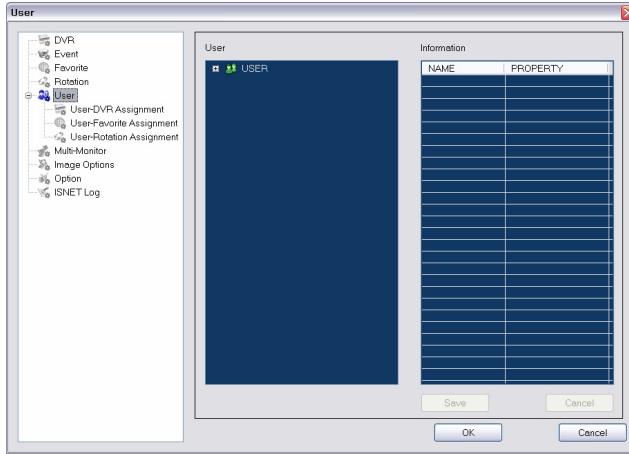


- ② Click **[Yes]** from a confirmation message to delete View Point.



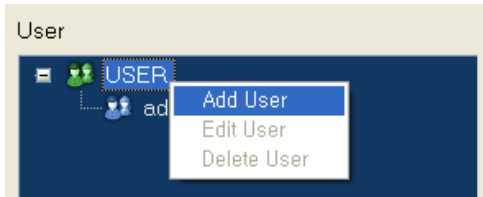
(5) User Configuration

Setting the user options.



(a) Add User

- ① From the [Main Configuration] tree, select User ().
- ② Select User item from the [User] tree and choose <Add User> from the Pop-up Menu.



- ③ Set the User information (Property) in the [Information] list.

Information		ISNET Login ID
NAME	PROPERTY	
ID	NEW USER 0	
Name		
Password		
Level	User	
Description		
ID		
Name		User name
Password		ISNET Login Password
Level		User / Manager
Description		User description

-
- ④ Enter User information (**Property**) and click [**Save**] button.

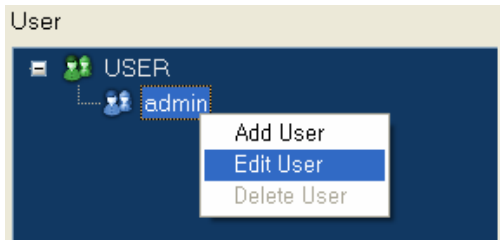


Note

- The ID information of User is essential information to be entered.
- For Manager Level, all of Configuration functions are available, while some functions only available for User Level.
- User Level is irrelevant to DVR authority.

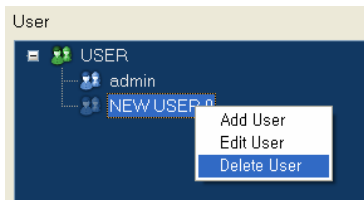
(b) Edit User Information

- ① Select User item from the [**User**] tree and choose <**Edit User**> from the Pop-up Menu to edit User information.



(c) Delete User

- ① Select User item from the [**User**] tree and choose <**Delete User**> from the Pop-up Menu to delete User information.

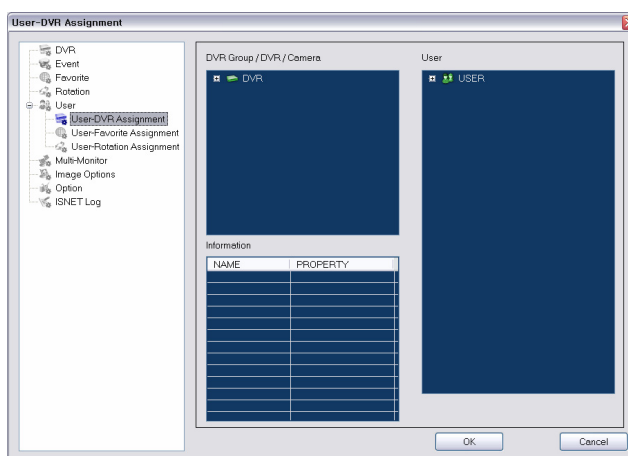


Note

- 'admin' ID cannot be deleted nor changed to User Level.
- The User at User Level can set some part only from Multi-Monitor, Image Option, Option Configuration.

(6) User DVR Assignment

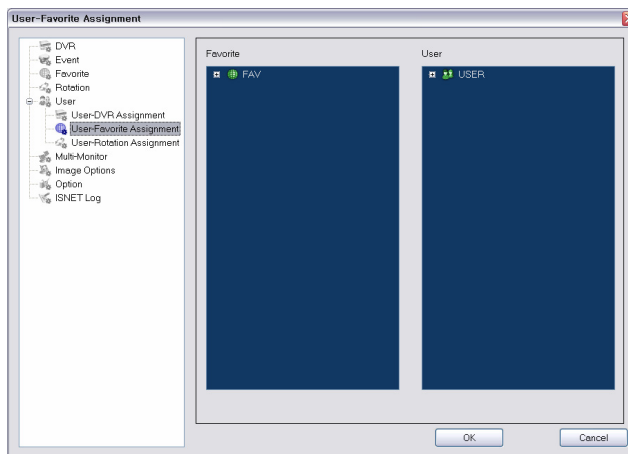
Assigning DVR to allow ISNET user to access.



- ① From the **[Main Configuration]** tree, select **User-DVR Assignment** (🌐).
- ② Select **Group or DVR** item to be assigned to **User** from the **[DVR Group / DVR / Camera]** tree.
- ③ Move to **User** item (**ID**) by Drag-n-Drop.
- ④ **Group or DVR** item will be assigned to **User** item (**ID**) of the **[User]** tree.

(7) User Favorite Assignment


Assigning Favorite to allow ISNET User to access.

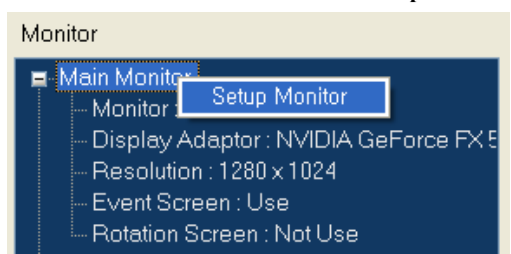


- ① Select **User-Favorite Assignment** (🌐) from the **[Main Configuration]** tree.
- ② From the **[Favorite]** tree, select **Favorite** item to be assigned to **User**.
- ③ Move to **User** item (**ID**) by Drag-n-Drop.
- ④ **Favorite** item specified will be assigned to **User** item (**ID**) of the **[User]** tree.

(8) User Rotation Assignment

Assigns Rotation allowed for ISNET User.

- ① Select Multi-Monitor() from the **[Main Configuration]** tree.
- ② Check Main Monitor/Multi-Monitor1/Multi-Monitor2 from the **[Monitor]** tree.
- ③ Select Monitor item and choose **<Setup Monitor>** from the Pop-up Menu.



- ④ Set Monitor information (Property) in the **[Information]** list.

Information	
NAME	PROPERTY
Monitor	1
Display Adaptor	NVIDIA GeForce FX 5700LE
Resolution	1280 x 1024
Event Screen	Yes
Rotation Screen	No

NAME	PROPERTY
Monitor	Monitor number which is checked from display property of the system
Display Adaptor	Information on Display Adaptor connected to Monitor
Resolution	Resolution of Monitor
Event Screen	Whether monitor is used for Event Screen or not
Rotation Screen	Select from the [Rotation] list assigned to the current user

- ⑤ Select the **[Save]** button to save setup information.

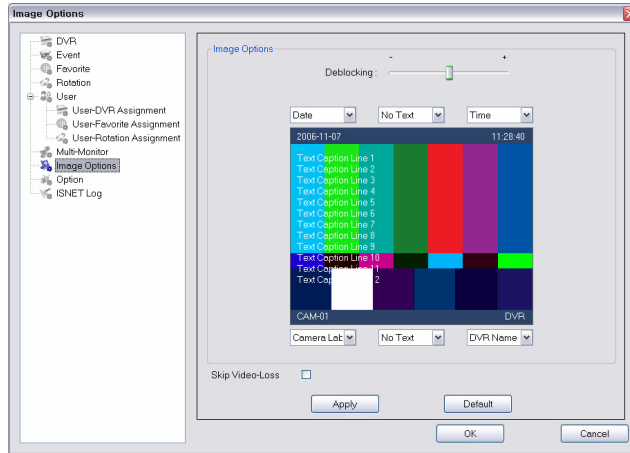
 **Note**


- Monitor Number may be displayed differently depending on the system status.
- Event Screen and Rotation Screen values cannot be set in one Monitor at the same time.
- For Multi-Monitor function, it can be set up to 3 monitors.
- More detailed information on Rotation assigned to User can be checked in the *[Rotation tree]*.
- If Event Screen is set to Main Monitor, you can see the latest Event Live View screen only when Events occur continuously.

If you set Event Screen to Multi-Monitor 1, 2, Event Live View screens up to 16 will be displayed in consecutive order at intervals of 10 seconds when Events occur continuously.

(10) Image Options Configuration

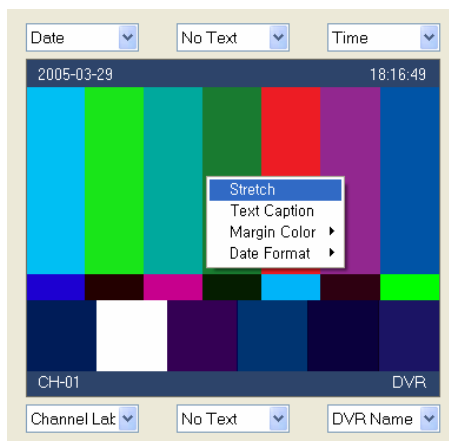
Sets Image Output Options.



- ① Select **Image Options** () from the **[Main Configuration]** tree.
- ② Set the value.

Deblocking	This is the function to solve the Blocking (Mosaic) effect of image. Increasing the value will reduce the Blocking effect.
Text Display Format	Selects Date, Time, DVR Name, Camera Label location.
Skip Video-Loss	Sets whether to output the screen of the Camera with no image input or not.

- ③ On the Image Options screen, select **<Stretch>**, **<Text Caption>**, **<Margin Color>**, **<Date Format>** from the Pop-up Menu.

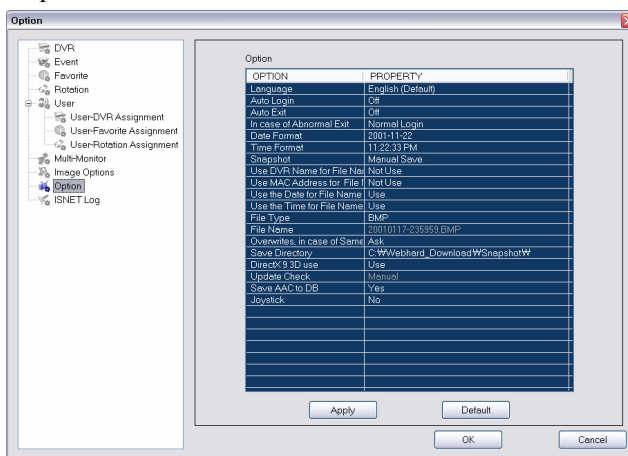



Stretch	Sets image to be extended to full screen.
Text Caption	Sets whether to display Text Caption or not.
Margin Color	Specifies the color of image margin.
Date Format	Sets Date Format to be used on video image (3 types)

- ④ Select [**Apply**] button to apply the current setup, or select [**Cancel**] button to set back to previous setup.

(11) Option Configuration

Sets ISNET Run Options.



- ① Select Option () from the [**Main Configuration**] tree.
- ② Set ISNET Run Options in the [**Option**] list.

- Language: Select the Language to be used in ISNET.



Note

- Select Language from the Language file (*.ini) list under Language folder of the folder where ISNET is running.
- If there is no Language file, it runs in English (Default).

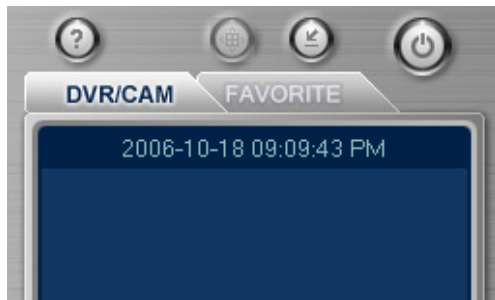
- Auto Login: When ISNET runs, this selects the user immediately being logged-in without log-in identification procedure.
- Auto Exit: When you exit ISNET, you can exit immediately without user identification procedure.
- In case of Abnormal Exit: If you could not exit ISNET normally due to system problem, set the log-in procedure when restarting the program.



Note

- For 'In case of Abnormal Exit', set to 'Last User Login', then the last user is given priority over the user set as Auto Login. If, that is, User A is an Auto Login user and the program is abnormally terminated during User B's use, it will be automatically logged-in by User B in next program run.

- Date Format: Selects Date Format to be displayed on ISNET time clock screen. (12 types)
- Time Format: Selects Time Format to be displayed on ISNET time clock screen. (3 types)



- Snapshot: Selects the method to save the screen as a file. Use the dialog box to save a file in case of Manual Save.
- Use DVR Name for File Name: Selects whether to use DVR name for the file name saved by Snapshot.
- Use MAC Address for File Name: Selects whether to use DVR's MAC Address for the file name saved by Snapshot.
- Use the Date for File Name: Selects whether to use the current date for the file name saved by Snapshot.
- Use the Time for File Name: Selects whether to use the current time for the file name saved by Snapshot.
- File Type: Selects the file type to save a file.



Note

- By selecting JPG, you can reduce the file capacity.

- File Name: Shows the file name type to which File Name option is applied.



Note

- If not use the File Option automatically created, the file name will be specified as Untitled.

-
- Overwrite, in case of Same File Name: Selects the action if there is already a file to save.
 - Ask: Checks if you would overwrite it.
 - Overwrite: Overwrites it. (The last image will be saved.)
 - Cancel: Cancels to save it. (The first image will be kept.)
 - Indexing: Adds a number to a file name and saves as another name.
 - Save Directory: Selects a basic directory to save a screen.
 - DirectX 9 3D use: Selects whether to output on the screen by using Microsoft DirectX 9.0 3D function or not.

**Note**

- To use the DirectX 9 3D function, Microsoft DirectX 9 software should be installed in your system.
- With the 3D function of Microsoft DirectX 9.0, you can reduce the system load.
- In case that Microsoft DirectX 9.0 is not installed, the program works normally even if you change this option to Use.

- Update Check: You can download the ISNET updated program from the server. Set the method to check if there is any updated program.

**Note**

- Update Check is available for the Manager level user only.
- Check the updated version when the Manager level user logs in.
- The User level user cannot change Language, Auto Login, Auto Exit, In case of Abnormal Exit, DirectX 9 3D use, Update Check among Option items.

- Save AAC to DB: If the system in which ISNET is installed is set to AAC Server, set whether to save AAC Event information transferred from DVR in DB or not.
- Joystick: Select the joystick device to be used for PTZ control.

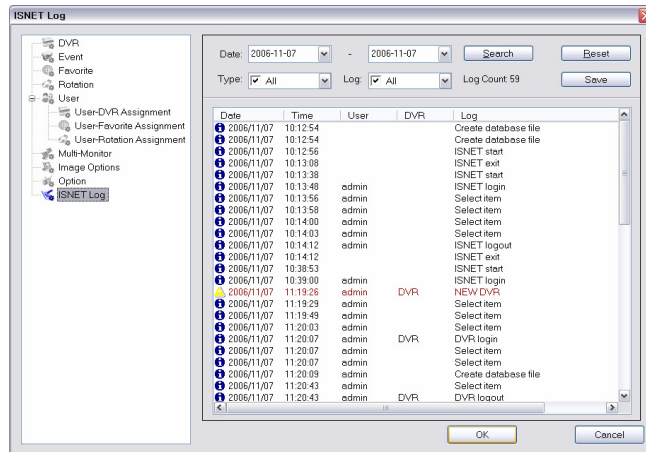
**Note**


- Even though Joystick device is connected after starting ISNET, you cannot use it until changing Joystick setting from Option.

- ③ Select [**Apply**] button to apply the current setup, or select [**Cancel**] button to set back to previous setup.

(12) ISNET Log

Checking ISNET Log.



- ① Select ISNET Log () from the [Main Configuration] tree.
- ② [Date]: Select the Date condition of the Log to be searched.
- ③ [Type]: Select the property (All, Normal, Error, Warning, Critical) of the Log to be searched.
- ④ [Log]: Select the type (All, Local, DVR, ISNET, Live View, Playback, Control, Event, Select item, ISNET start, ISNET exit, Login, Logout, Lock, File Saved, File Open/Load, Create database, Update database, Config) of the Log to be searched.
- ⑤ Log Count: Indicates the number of Logs to be searched.
- ⑥ [Search]: Searches the Log meeting the condition.
- ⑦ [Reset]: Initialize the Search condition to search.
- ⑧ [Save]: Outputs the Log searched as a HTML file.

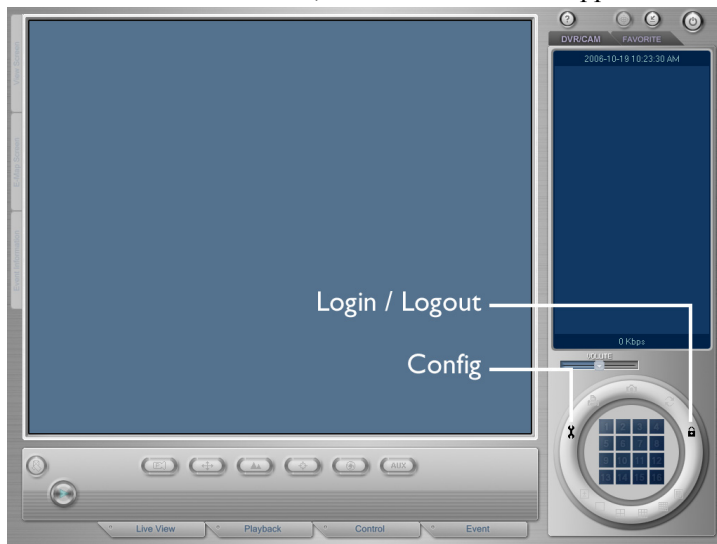
Chapter

3

Using ISNET

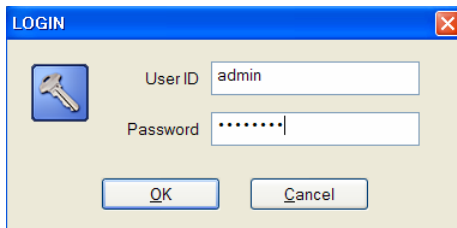
1. Starting the Program

When you start ISNET for the first time, the initial screen will appear as follows:



(1) Login

To use ISNET for the first time, you have to log in. Select the [**Login/Logout** (🔑)] button to enter User ID and Password.



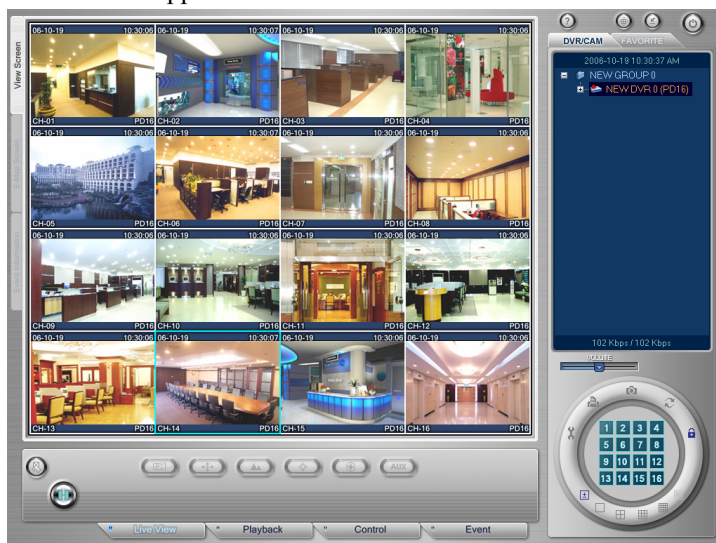
(2) DVR / User Setup

Select the [Config (⚙️)] button and complete DVR, User and other setups to use several functions of ISNET. For more setup details, refer to [Chapter 3. How to set ISNET].

2. Live View

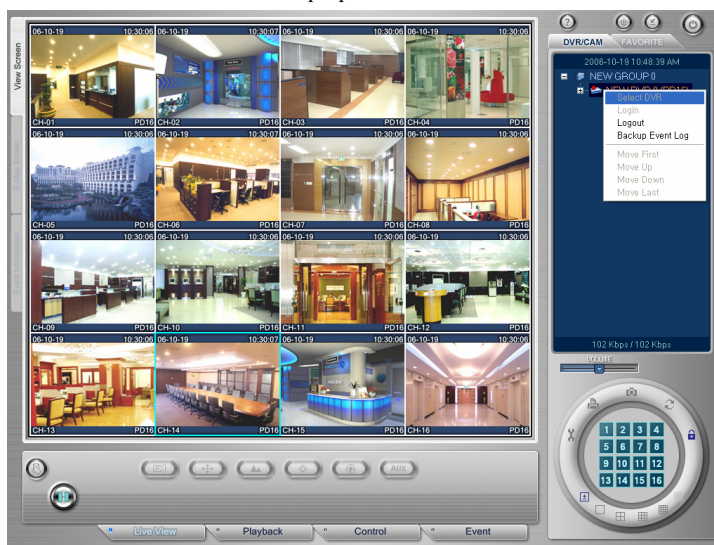
(1) Real-time Monitoring

When you start ISNET by logging in or select the Live View tap, the following screen will appear:



(a) Change DVR/Favorite under Real-time Monitoring

- ① Double-click on the desired DVR from the [DVR/CH] tree on the right side or select <Select DVR> from the Pop-up Menu to monitor desired DVR in real-time.



- ② Double-click on the desired Favorite from the **[FAVORITE]** tree on the right side to monitor Cameras composed of desired Favorites.



Note

Popup menu of DVR/CAM, Favorite Tree

DVR/CAM TREE		FAVORITE TREE	
Select DVR	Selects DVR item	Select Favorite	Selects Favorite item
Login	DVR log-in		
Logout	DVR log-out		
Backup Event Log	Backs up Event log		
Move First	Moves item to the top position		
Move Up	Moves item to the higher position		
Move Down	Moves item to the lower position		
Move Last	Moves item to the lowest position		

(b) Change Camera under Real-time Monitoring

Right click the desired Camera of DVR/Favorite currently selected from the **[DVR/CAM]** or **[FAVORITE]** tree on the right side to monitor the Camera in 1-split screen in real-time.



Note

※ **The Meaning of Icon shown on DVR/CAM, Favorite Tree**

Group	DVR Connect	DVR Disconnect
DVR	Recording DVR	Recording and Event Backup DVR
Event Backup DVR	Camera Input OK	Camera Input Loss
Motion Detected	No Motion Detected	
Recording	Not Recording	
Favorite (including E-Map)	Favorite (not including E-Map)	

(c) View Screen

- ① **[View Screen]** tap shows a real-time image.
- ② **[E-Map Screen]** tap shows the E-Map of selected Favorite.

Press **<Ctrl>** key and select Camera from the **[E-Map Screen]** to select desired Camera. If you select Camera, you can move to **[View Screen]** or Rotation Monitor set to see from the Popup menu.



(d) View Split Screen

Click the Split Mode button on the right bottom to select a desired Split Screen.

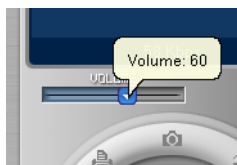


- ① DVR/CAM: 1, 4, 9, 16, X Split Mode
- ② FAVORITE: 1, 4, 9, 16, 25, X Split Mode

(2) Play Audio

You can listen to audio in real-time according to Audio setup of DVR. Check first if there is Audio (🔊) symbol on the top right of the image.

- (a) Select the image of the Camera you want to listen to audio.
- (b) The frame of selected image turns to blue color and audio is played.
- (c) To adjust sound volume, use the [Volume] button.



(3) Camera Control

Check if Camera Control is possible for the camera first. Select the image of the Camera requiring camera control to activate the camera control button. By using

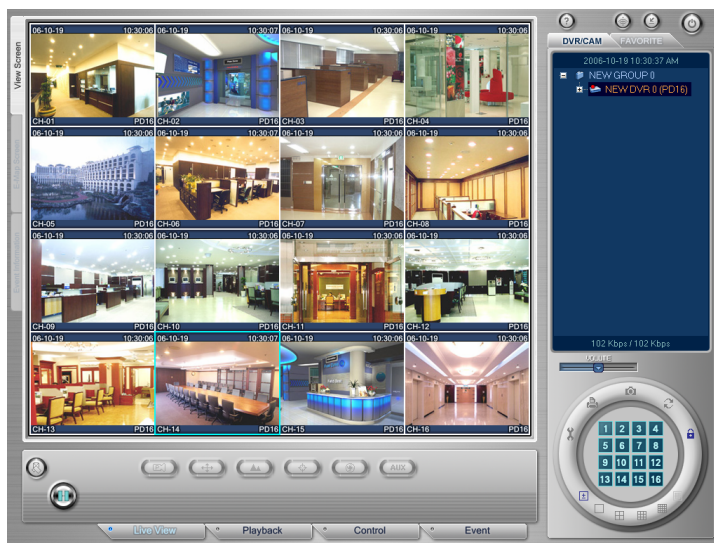
the Joystick installed in the system, you can control the PTZ function of camera.




Note

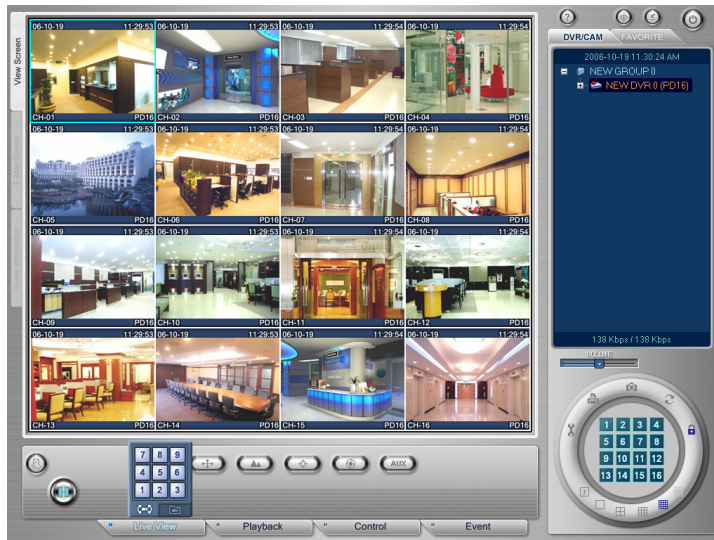
Joystick button and PTZ function

Joystick button	Function
1	Moves to the Iris, Focus, Zoom, Pan/Tilt mode in order
2	Moves to the Pan/Tilt, Zoom, Focus, Iris mode in order
3	Selects screen in reverse direction from the currently selected screen
4	Selects screen in due direction from the currently selected screen
5	Selects screen above the currently selected screen
6	Selects screen under the currently selected screen



(a) Preset

- ① To control the Preset function of camera, adjust the image of camera by setting Pan/Tilt/Zoom/Focus properly
- ② Select the [Preset ()] button.



- ③ When the screen for Preset number input appears, select the **[Preset Save]** button and then choose the number desired to save. You can save nine **[Preset]** numbers from 1 to 9 in the same manner.



- ④ To load Camera Location and Status saved by Preset, select the Preset button and choose the **[Preset Move]** button. And then select the button for desired Preset number.



(b) Pan/Tilt

- ① To control Pan/Tilt of camera, select the image of the appropriate Camera. If it is a controllable camera image, control buttons will be activated.
- ② Select the **[Pan/Tilt ()]** button of panel, then the direction button for Pan/Tilt control will be activated.

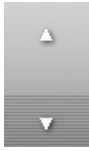


- ③ Adjust camera Pan/Tilt with the direction button.

(c) Zoom

- ① Select the **[Zoom ()]** button of panel to activate the direction button for Zoom control.
- ② To Zoom in by using the direction button activated, select the upward button, while click the

downward button to Zoom out.



(d) Focus

- ① Select the **[Focus()]** button of panel to activate the direction button for Focus control.
- ② To adjust the Focus in long distance by using the activated direction button, click the leftward button, while click the rightward button to adjust the Focus in close distance.



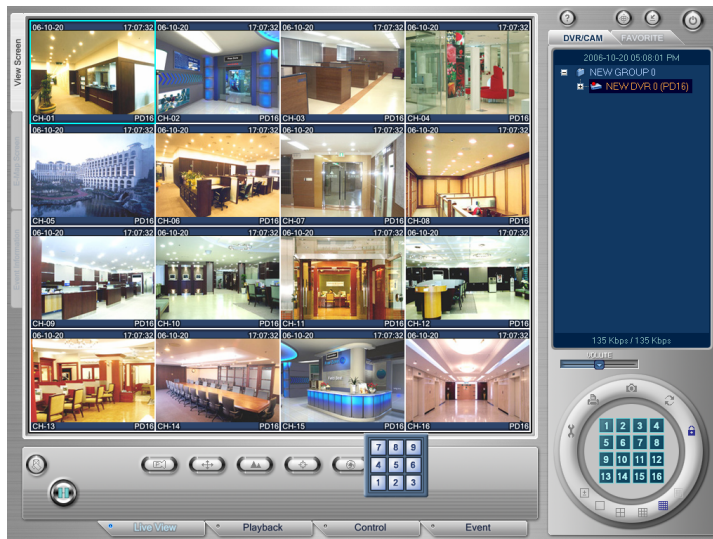
(e) Iris

- ① Click the **[Iris ()]** button of panel to activate the direction button for Iris control.
- ② Click the rightward button to open Iris by using the activated direction button, while click the leftward button to close Iris.



(f) AUX

- ① This **AUX (auxiliary)** function is available for the camera supporting the AUX function only.
- ② Click the **[Auxiliary ()]** button of panel to activate the camera AUX function number buttons for function control.




- ③ Click the number button for desired function.

(4) Message Transfer

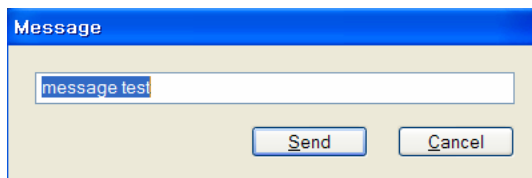
This is the function to send a message to the site connected during real-time

monitoring. This enhances the remote monitoring function by transferring a message from a remote place through DVR selected by the manager who is seeing the DVR screen.

- ① Select the **[Message()]** button, then a message window will appear.



- ② Enter a message to be transferred to DVR.



- ③ After entering a message to be sent, click **[Send]** button. When a message is sent, the message transferred to the DVR screen appears at the bottom of the screen and a warning beep will sound. It will be automatically closed simultaneously with clicking the **[Send]** button.
- ④ If you don't want to send a message, click the **[Cancel]** button.

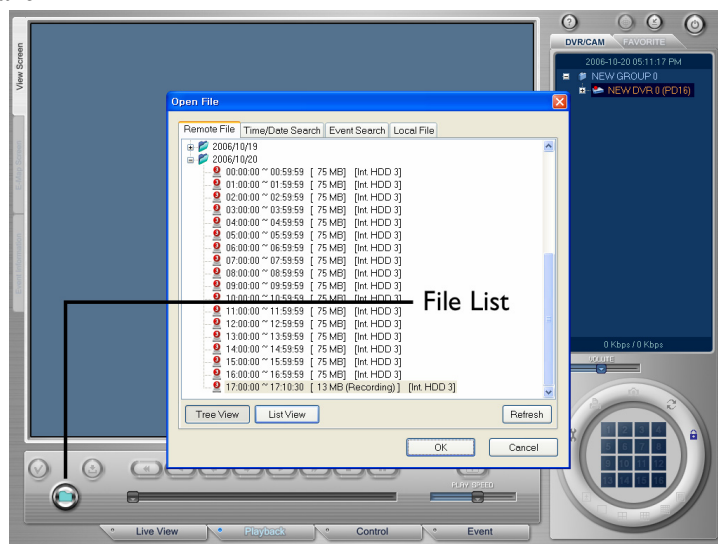
(5) Play / Pause

Pauses or plays the current screen.



3. Playback

(1) File Search

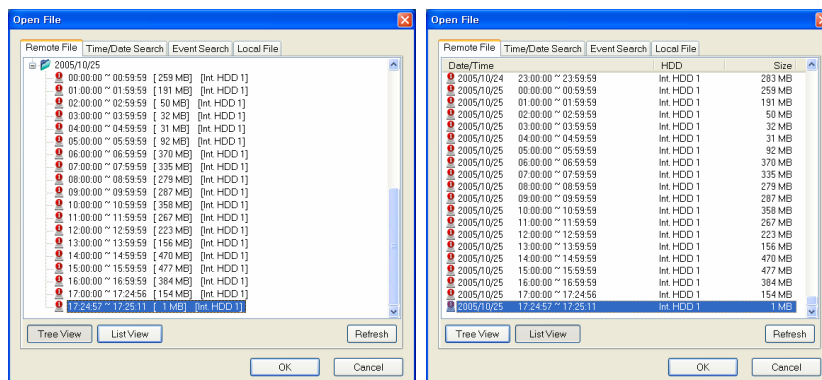


(a) Open File

Select **[Playback]** tap at the bottom of panel or click the **[File List (📁)]** button to display the file information of DVR selected from the **[DVR/CAM]** tree.

■ Open Remote File

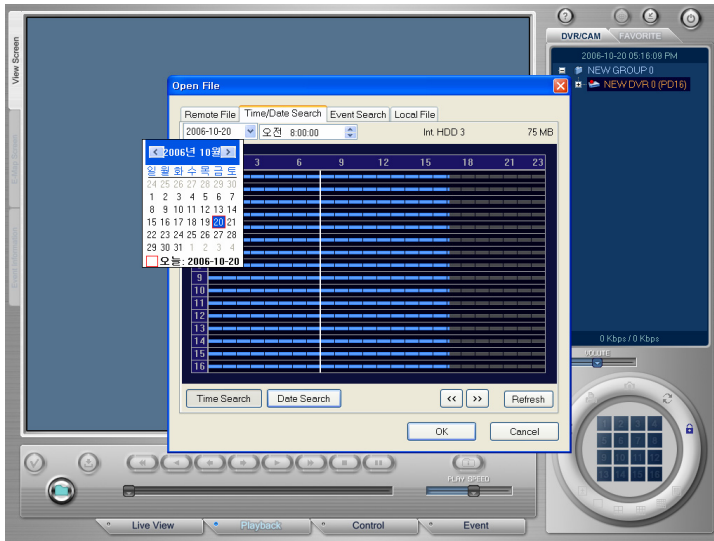
- ① Select the **[Remote File]** tap from the Open File window.
- ② You can select the method of file display by using the **[Tree View]** button and **[List View]** button.



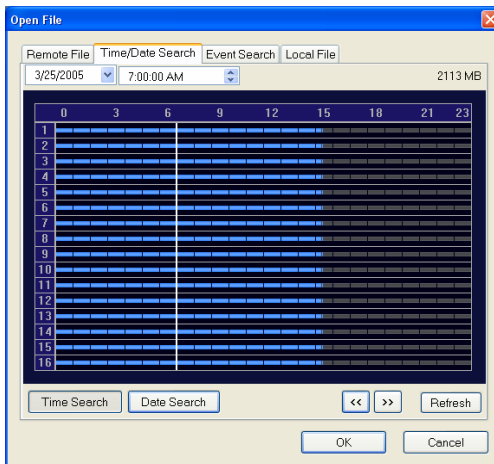
- ③ With the **[Refresh]** button, you can update the latest file information of the system.
- ④ Select a file from the “Open File” window and then click **[OK]**.

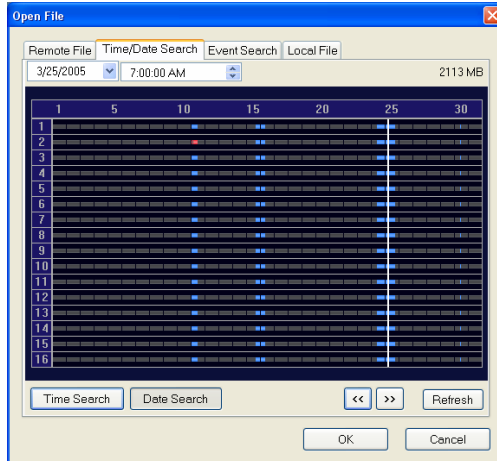
■ Time/Date Search

- ① Select the **[Time/Date Search]** tap from the **“Open File”** window.
- ② Select Time and Date to be searched by using the Time/Date combo box at the top left.



- ③ You can check the time information of recorded file by using the **[Time Search]** button and **[Date Search]** button.

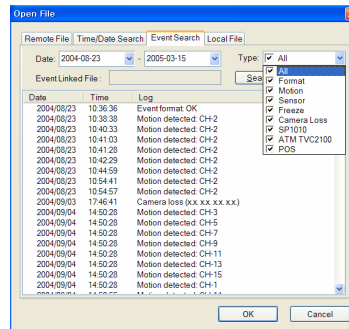
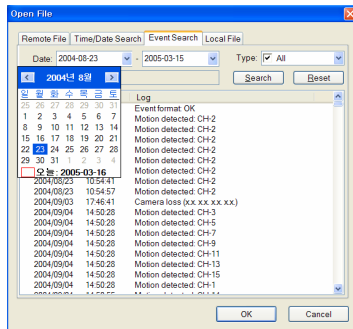





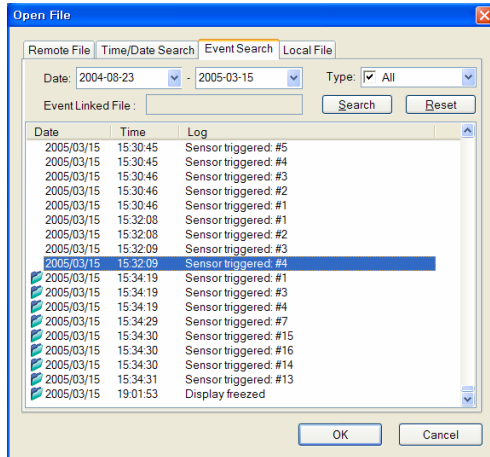
- ④ Move to desired time period by using the left/right direction button (,), left mouse button, left/right direction button of keyboard.
- ⑤ With the **[Refresh]** button, you can get the latest file information of the system.
- ⑥ Click **[OK]** button.

■ Event Search

- ① Select the **[Event Search]** tap from the “Open File” window.
- ② Select Date and Event Types you want to search by using the **[Date]** combo box and **[Type]** combo box at the top of the window and choose the **[Search]** button.



- ③ If there is any file in which Event is recorded () icon will be displayed and you can play back the appropriate file.



- ④ By using the **[Reset]** button, you can initialize search conditions with the entire time and all types.
- ⑤ Select the Event on which (📄) icon will be displayed and then click **[OK]** button.

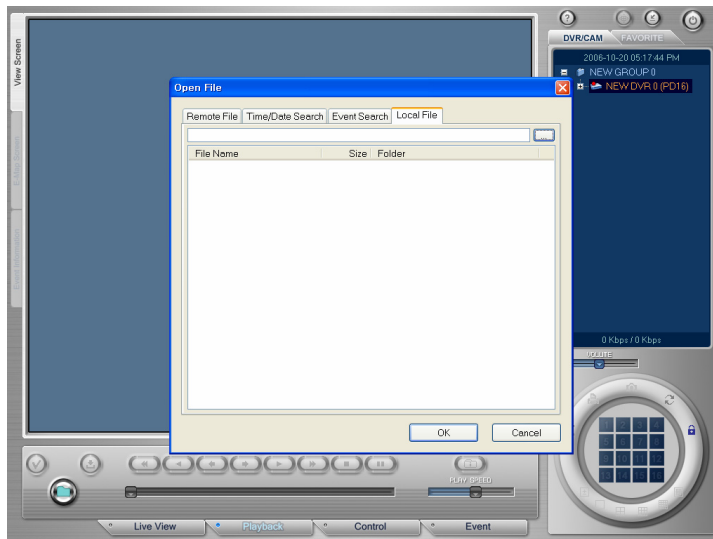
Note

- For Event Search, you must back up the Event log of DVR first.

■ **Open Local File**

You can select the file stored in Local PC.

- ① Select the **[Local File]** tap from the “Open File” window.



- ② Click the **[Search (🔍)]** button to choose an image file (pw3/exe) in your PC.
- ③ Click **[OK]** button.

(b) Play File

- ① When you select the desired file from the “**Open File**” window, the image of the file to play will be displayed, showing the time information on Slider Bar.



- ② Press the [**Play** (▶)] button to play. At this time, you can see the image by operating function buttons displayed on the panel. In case of a file recorded with sound, the sound will also be played with.
- ③ The function of buttons on the panel are as follows:

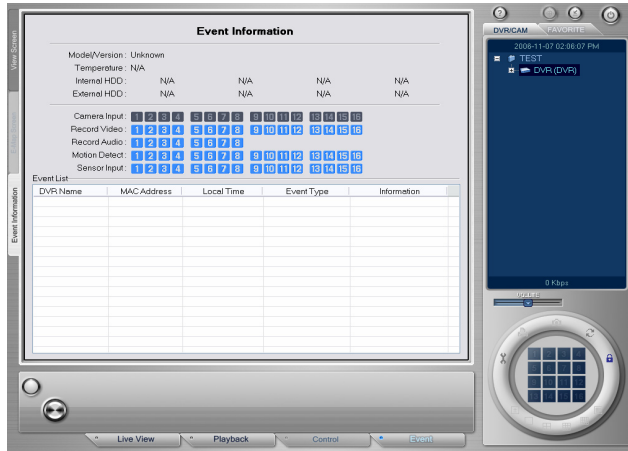
Button	Function	Button	Function
	Fast Reverse Play		Play
	Reverse Play		Fast Forward Play
	Reverse Play screen by screen		Stop
	Forward Play screen by screen		Pause

You can adjust playing speed by using the [**Play Speed**] slide.



(c) Check File Information

Press the [**File Information** (📁)] button, then you can see the system information and recording information of the selected file.



① System Information

Checks the information, such as System Version, System Language, System Name, MAC Address and VGA Mode, etc.

② Recording Information

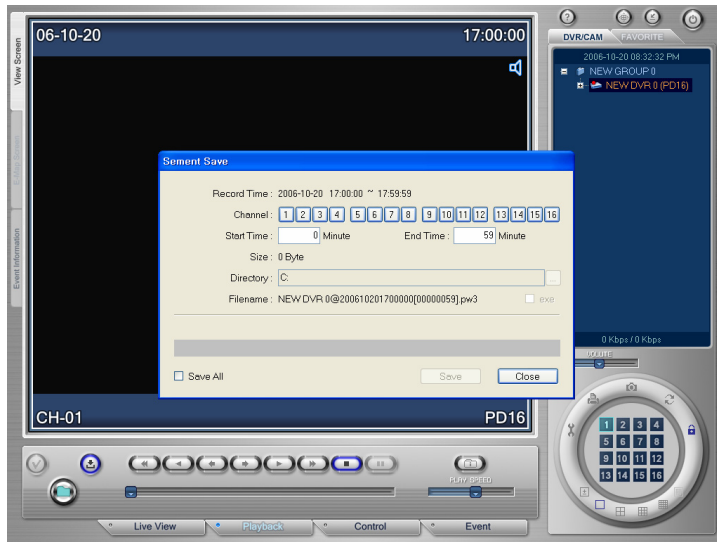
You can check the information, such as Recording Time of File, Camera Event, Resolution, Compression Ratio, the Number of Frame, Audio, Pre-Record, Label, the State of Recording. In the state of recording, it consists of colors by recording mode. They include white, gray, blue and yellow, showing the state of recording respectively. The followings are meanings by color:

Color	Meaning
White	No recording
Gray	Normal recording state
Blue	Recorded in Motion Record Mode
Yellow	Recorded in Sensor Record Mode

The location of color in the Recording State Bar indicates the time of recording. To re-search image after seeing the system information and recording information of selected file, press the [File Information (📁)], [Play (▶)] button, etc. to return to the image screen.

(d) Segment Save

To download the image data stored in the system, stop to search. Select the [Stop (⏏)] button or [Pause (⏸)] button and then choose the [Segment Save (📁)] button.



■ To download all files:

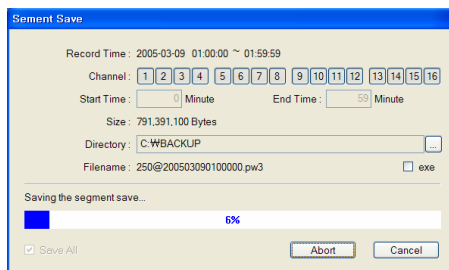
- ① To download all image files, check in the **[Save All]** box.
- ② Specify the location where to download an image file in the **[Directory]**.
- ③ Filename will be automatically specified as Site name@ Date+Time.pw3 (SiteName@YYYYMMDDHHMMSS.pw3).



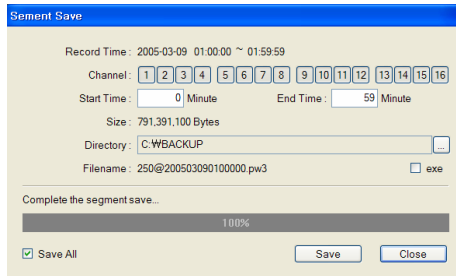
Note

- If user modifies a filename temporarily, difficulties in file management may occur. To change the filename temporarily, use the Change Name function from the File Manager in the operating system.

- ④ To save as an .exe file enable to execute by itself without any linkable program, check in the **[exe]** check box.
- ⑤ Set up information and then click the **[Save]** button to save a file. To cancel downloading, click the **[Abort]** button or **[Cancel]** button. When you click the **[Abort]** button, you can resume it later by saving the segment currently downloaded.



- ⑥ When you complete downloading, **"Complete the segment save..."** message will appear.



■ To download some cameras of file or specific time:

Select the camera and time of image file and download the file.

- ① Select the desired camera and time. When you select the camera and time, the size of file to download will be automatically displayed.

- ② Set the rest in the same manner with that of [Save All].

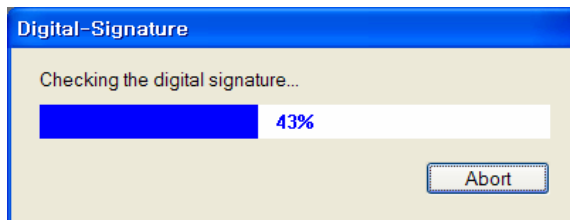
Filename will be automatically specified as Site name@ Date+Time [Camera+Segment Save Time]

(SiteName@YYYYMMDDHHMMSS[CCCCMMMM].pw3).

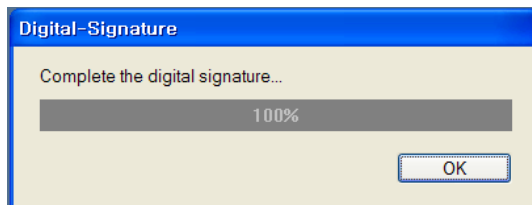
(e) Use Digital Signature

Digital Signature is the function to check that the image data stored in local computer is not an altered (same as the original) file. Since the use of Digital Signature automatically gives a file the Key Code value for the security of recorded image to download, it is safe to check if a file is altered or the truth. (It is available for the file only stored in local PC.)

- ① To use the Digital Signature function, select [Digital Signature(✓)].
- ② “Digital Signature” appears and check whether the file is a true file or not.



- ③ If the image data stored in local PC is not the original, “Failure the digital signature...” message appears. If it is the original, “Complete the digital signature...” message will appear.

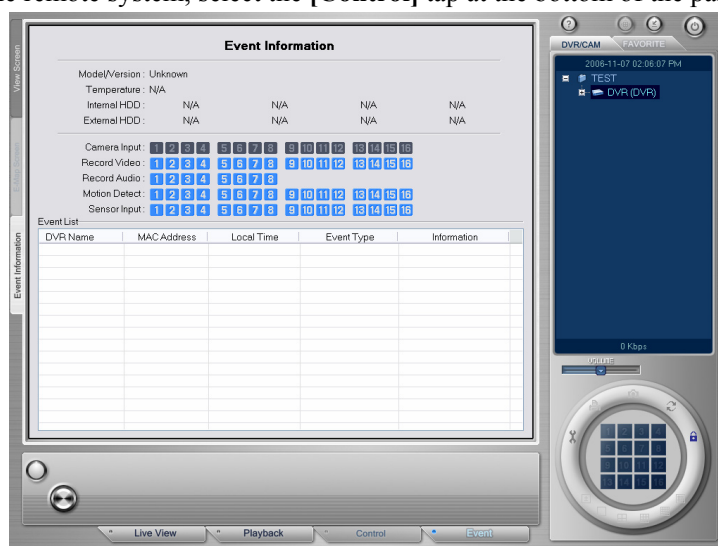


4. Control


Remote System Setup is to control DVR setup remotely through ISNET. For more information on setup, refer to DVR User's Manual [Chapter4. DVR Setup].

To set up DVR remotely, the user must be authorized for Remote Control. Therefore, you must check user's privilege before access.

To set up the remote system, select the [Control] tap at the bottom of the panel.



(1) System Information View

- ① Select the [System Information ()] button.
- ② Check general information of the system, including System Version, Audio/SCSI Module, MAC Address, System Temperature, Storage Media configuration. You can also check how is configured through frames among hard disks grouped in case of RAID configuration.
- ③ Checking Camera and Record Status: Each Status that is meant by color of Camera, Motion, Sensor, Alarm number is as follows:

Item	Color 1 (contents)	Color 2 (contents)
Camera Input	Gray (Camera Loss)	Blue (Camera connection)
Record Video	Red (Record Video)	Blue (Not Record Video)
Record Audio	Red (Record Audio)	Blue (Not Record Audio)
Motion Detection	Red (On)	Blue (Off)
Sensor Input	Red (On)	Blue (Off)
Alarm Output	Red (On)	Blue (Off)

- ④ Sensor Input is the function to enter Sensor Input signals from ISNET to DVR, which is set up by selecting a desired Sensor number button. With the Sensor number button turned red, the Sensor is

activated for a certain period (Dwell) and automatically released.

- ⑤ Alarm Output is the function to enter Alarm Output signals from ISNET to DVR, which is set up by selecting a desired Alarm number button. With the Alarm number button turned red, Alarm works. Select the Alarm number button in operation once more, then it turns blue and the Alarm is released.

(2) Remote Record Setup

By using the Record Setup function, you can control the Record Setup function of DVR remotely. It provides such functions as DVR Mode (Record Mode) / Event / Resolution / Comp. (Compression) / FPS (Frame) / Audio / Network (Network Transfer) / M. Lev (Motion Sensitivity) / M. Reg. (Motion Region) / Pre. (Pre-Record). For more details, refer to DVR User's Manual [Chapter 4. DVR Setup - Recording Setup].

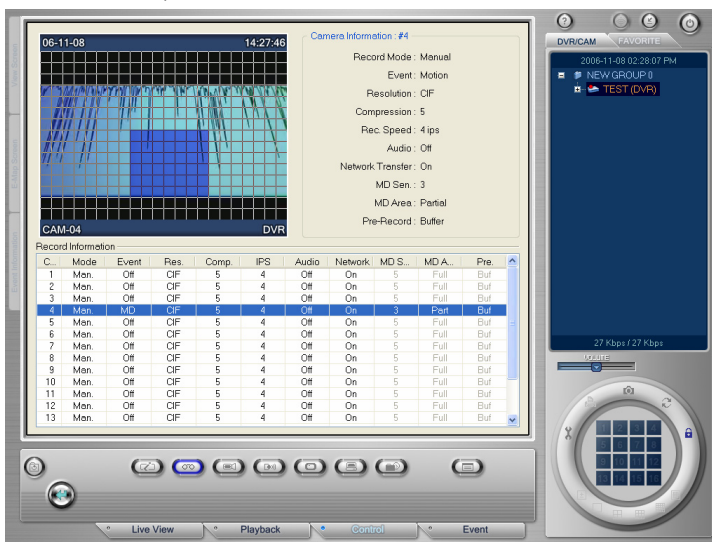
- ① Select the [Record Setup (OO)] button. The image of selected Camera will appear at the top left of the screen, while Setup information by Camera at the top right.



- ② Click on the location of the item desired to control in the list box at the bottom of the screen.
- ② When the list of the appropriate item appears, select the setup value desired.




- ③ To use the Motion Record, select Motion Record from Event and then set up Motion Region. If you select Motion Region as Full, the whole area shown on the screen will be selected. If you select Motion Region as Part, the screen changes as shown below and you can set up the Motion area by using the left mouse button (Release Motion Area) and the right mouse button (Select Motion Area).

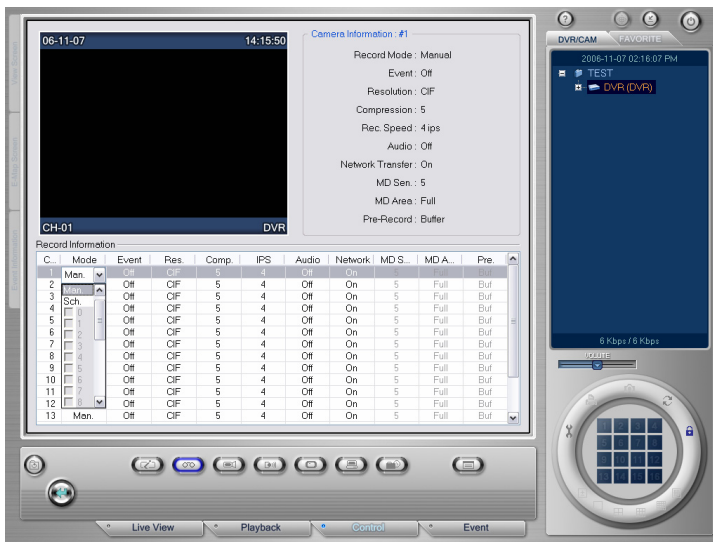



- ⑤ Select the setup value and then choose the [Configuration Apply] button to apply it to DVR.

(3) Remote Camera Setup

By using the appropriate function, you can control the DVR's Camera Setup function remotely. Since this provides DVR's Camera Setup function as it is, Bright/ Contrast / Saturation / AGC / PTZ IP / Port / Label controls are available. For further information, refer to DVR User's Manual [Chapter4. DVR Setup – Camera Setup].

- ① Select the **[Camera Setup ()]** button. The image of selected Camera appears at the top left of the screen, and Camera Setup information by Camera will appear at the top right of the screen.
- ② Click on the location of the item to control in the list box at the bottom of the screen.




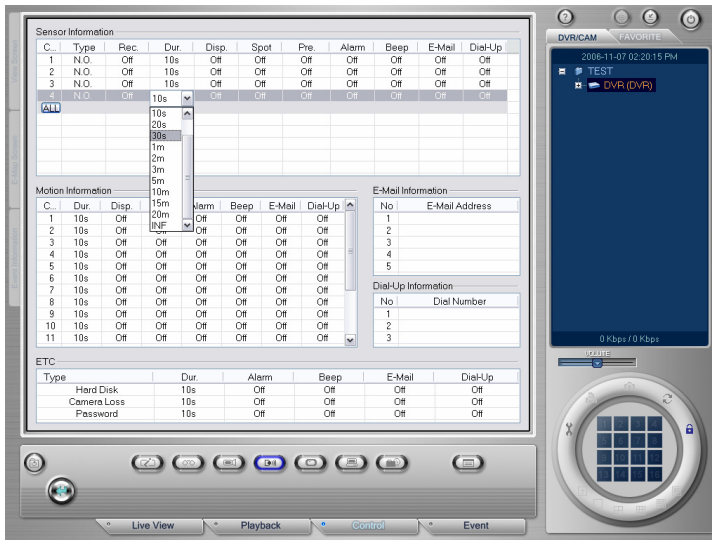
- ③ When the list of the appropriate item appears, select the desired setup value.
- ④ Select the setup value and then choose the **[Configuration Apply ()]** button to apply it to DVR.

(4) Remote Event Setup

By using the appropriate function, you can control the DVR's Event Setup function remotely. Since this provides DVR's Event Setup function as it is, Sensor's Type / Record / Event Duration / Display Video / SPOT Video / Preset / Alarm / Beep / E-Mail / Dial-up controls are available.

For further information, please refer to DVR User's Manual **[Chapter4. DVR Setup - Event Setup]**.

- ① Select the **[Event Setup ()]** button.
- ② Click on the location of the item to control from the list box at the bottom of the screen.
- ③ When the list of the appropriate item appears, select the desired setup value.



- ④ For E-Mail Address and Dial-Up input, select the List and enter directly.
- ⑤ When setting the Preset function linked with Sensor, the front number indicates the Camera number and the next two numbers indicate the Preset number.
The meanings according to setup are as follows:
If the Preset function is set to 2:6/3 for No. 1 Camera
-> In case of No. 1 Sensor operation, move No. 2 Camera to No. 6 position, while to No. 3 position in case Sensor is closed.
- ⑥ Select the setup value and then choose the **[Configuration Apply (🔍)]** button to apply it to DVR.

(5) Remote Screen Display Setup

By using the appropriate function, you can control the DVR's Display Setup function remotely. Since this provides DVR's Display Setup function as it is, Display's TV Flicker Free / Camera Loss Skip / SPOT Rotation / Split Group (1/2V/2H/4/7/8/9/10/13/16) controls are available. For further information, please refer to DVR User's Manual **[Chapter4. DVR Setup - Screen Display Setup]**.

- ① Select the **[Display Setup (📺)]** button.
- ② Click on the location of the item you want to control in the Check box / Combo box on the screen.
- ③ When the list of the appropriate item appears, select the desired setup value.



- ④ After setting up Split Group, you can adjust the Cameras of Split Group and Dwell Time by using a mouse (the left button – number decrease, the right button – number increase).



- ⑤ Select the setup value and then choose the [Configuration Apply (🔧)] button to apply it to DVR.

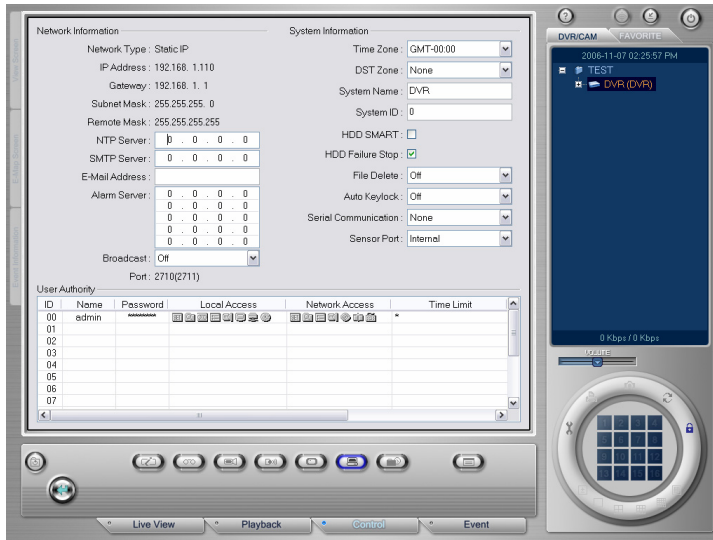
(6) Remote System Setup

By using the appropriate function, you can control DVR's Network Setup and System Setup remotely. Since this provides DVR's Network Setup and System Setup functions as they are, NTP Server / SMTP Server / E-Mail Address / Alarm Server Setup for Network and Time Zone / DST Zone / System Name / System ID / HDD SMART / HDD Failure Stop / File Delete / Auto Key lock / Serial Communication / User Management Setup for the System can be controlled.

However, some functions are subject to restriction for security and safe operation of the system. For further information, please refer to DVR Use's Manual [Chapter4. DVR Setup - Network Setup, System Setup].

■ Network System Information Setup

- ① Select the [System Setup (🔧)] button.
- ② Click on the location of the item you want to control in the Check box / Combo box on the screen.
- ③ When the list of the appropriate item appears, select the desired setup value.



- ④ Select the setup value and then choose the [Configuration Apply (🔧)] button to apply it to DVR.

■ User Management Setup

Setup for User Registration / Privilege is possible only when you access to with Admin Privilege. The user without Admin Privilege cannot do System Setup and Schedule Setup, but check information only.

- ① Select the location desired to set up and enter your Name and Password. If Name is 'admin', you can set up Password only.
- ② Set up Local Access / Network Access privilege. Select the list box and then choose Icon and Item. The Icon with setup privilege becomes enable, and the icon released becomes disable. In case of Network Access privilege setup, Remote Control function is available only when [Control (🔧)] is set up.
- ④ In case of Local Access privilege setup, Time Limit is activated by [Time Limit (🕒)] setup, View Camera is activated by [View (📺)] setup. And Search Camera is activated by [Search (🔍)] setup.



Note

■ Examples of Limit Time Setup

* : All periods of time

1-3 : from 01:00 to 03:59:59

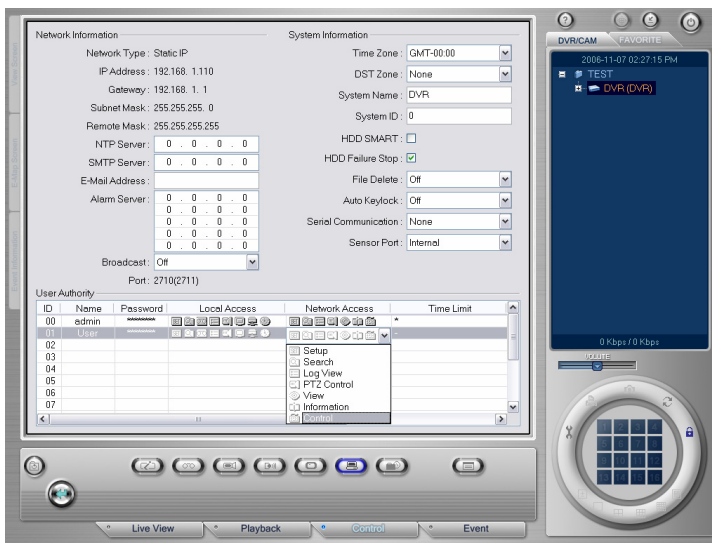
1, 3 : from 01:00 to 01:59:59, from 03:00 to 03:59:59

■ Examples of Camera Setup

* : All Cameras

1-3 : No.1 Camera, No. 2 Camera, No. 3 Camera

1, 3 : No.1 Camera, No. 3 Camera

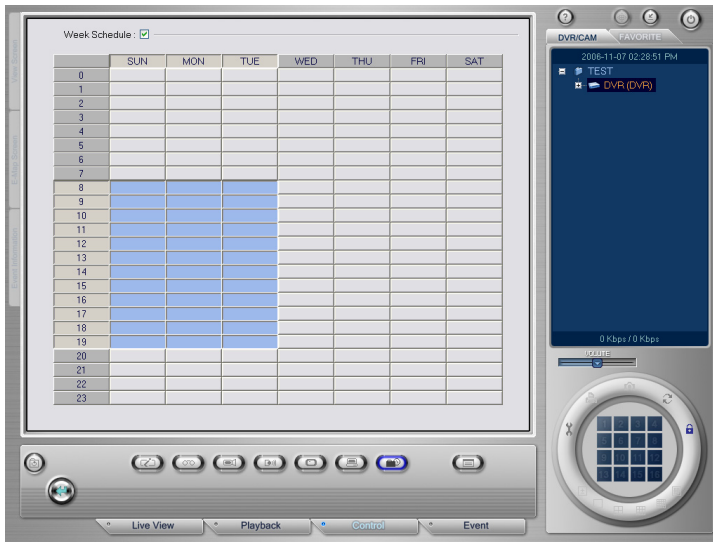


- ④ Select the setup value and then choose the **[Configuration Apply]** button to apply it to DVR.

(7) Remote Schedule Setup

By using the appropriate function, you can control the DVR's Config Setup function remotely. Among DVR's Config Setup functions, only Weekly Schedule Apply and Setup functions are provided for system security and safe operation. For further information, please refer to DVR User's Manual **[Chapter4. DVR Setup - System Configuration Setup]**.

- ① Select the **[Schedule Setup]** button.
- ② To Set up / Apply Weekly Schedule, select the Check box. The appropriate day and time of the week will be chosen by Option and Drag.



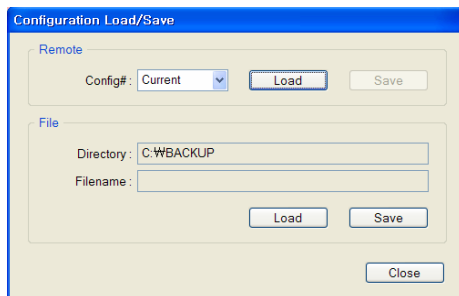
- ③ Select the setup value and then choose the [Configuration Apply (🔧)] button to apply it to DVR.

(8) Configuration Load/Save

By using the appropriate function, you can remotely load and save the Configuration value of DVR Setup so as to control it. Among DVR's Configuration Setup functions, Load Configuration / Save Configuration / Apply Configuration functions are provided as they are.

■ Load/Save Remote Configuration Value

- ① Select the [Configuration Load/Save (🔧)] button.



- ② To load the Configuration value stored in DVR, select Config# (Configuration Number) and then choose the [Remote] – [Load] button.
- ③ To save the Configuration value currently configured in DVR, select Config# and then choose the [Remote] – [Save] button to save.

■ File Configuration Value Load/Save

- ① Select the [Configuration Load/Save (🔧)] button.

-
- ② To load the Configuration value stored in your PC into DVR, click the **[File] – [Load]** button.
 - ③ To save the Configuration value currently configured into your PC, click the **[File] – [Save]** button. The filename saved is automatically specified as Site name@ModelName_Version_VGA Type.cfg. (For your convenience, we support HTML type file format as well.)




Note

- *Configuration Value Save Filename*

Filename in which Configuration value will be saved is automatically specified as Site Name@Model Name_Version_VGA Type.cfg. For example, the file named Seoul@PRO_12_NTSC.cfg means that its DVR Name is Seoul, Model is PRO, Version 1.2.x, and its VGA Type is NTSC.

- *Apply Remote Configuration Setup Value*


If you apply the Configuration value of DVR #1 to DVR #2, #3 and others, for example, follow the following procedure:

- ① *Connect to DVR #1 and load the Configuration value **[Remote] – [Load]***
- ② *Save the Configuration value in your PC **[File] – [Save]***
- ③ *DVR #1 Logout / DVR #2 Login*
- ④ *Load the Configuration value in your PC **[File] – [Load]***
- ⑤ *Select the **[Configuration Apply]** () button to apply it to DVR #2*
- ⑥ *To save the Configuration value applied in DVR:
Specify the Config# (**Configuration number**) and then save it **[Remote] – [Config# Select] – [Save]**.*
- ⑦ *DVR #2 Logout / DVR #3 Login*
- ⑧ *Repeat ④~⑥*

(9) Use Log Information



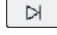
By using the appropriate function, you can view and save the DVR's System Log information. This provides the DVR's Log function as it is.

■ System Log

- ① To load the System Log value stored in DVR, select the **[Log Viewer]** () button.
- ② Select the System Log Tab from Log Information shown on the screen to check the **[System Log]** tap information. Log messages are divided into and shown as Normal, Warning, Critical and Error by color.
- ③ You can view the Log Information, moving from page to page, by using Page Move buttons at the bottom. Functions of Page Move buttons are as follows:





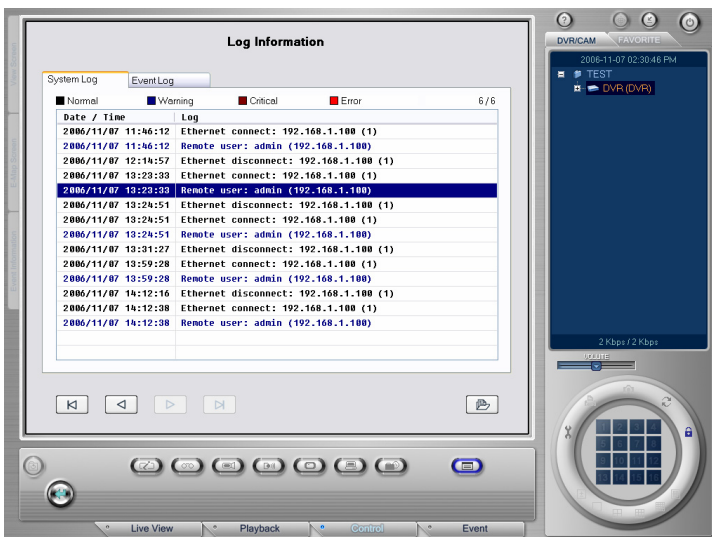
: Move to the last (the oldest) log page

-  : Move back page by page
-  : Move to the previous page by page
-  : Move to the first (the latest) log page



■ Event Log

- ① To load the Event Log value stored in DVR, select the **[Log Viewer **] button.
- ② Select the **[Event Log]** tap from Log Information shown on the screen to check the Event Log information.
- ③ You can view Log Information, moving from page to page, by using the Page Move buttons at the bottom.
- ④ To save Log as a file in your PC, click the **[Log Save **] button. File name will be saved as the DVR Name@ EventLog.txt type.



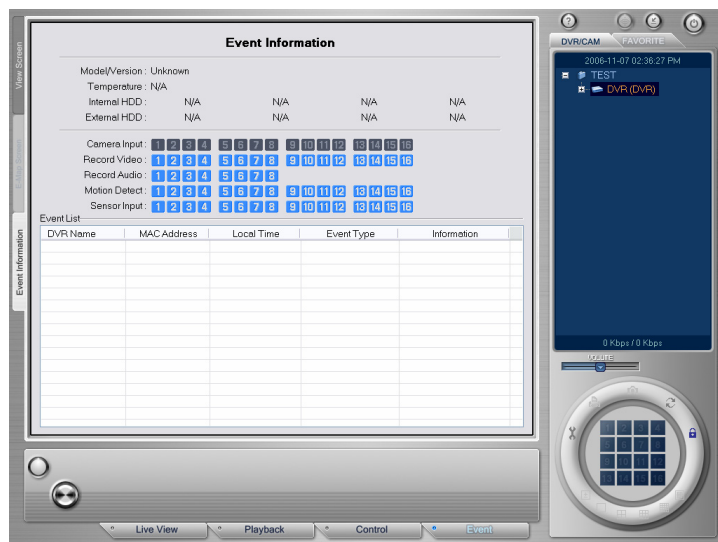
5. Event

(1) Event Action

When Event is received, the Event Information tap on the left of the screen is blinking and performs functions, such as Event Live View / Duration / Beep / Linked exe. / Exe. Parameters, according to the Event Configuration setup value. For more detailed description of Event Configuration, see [Chapter 3. How to set ISNET - Event Configuration].




(2) Event Information View

In the Event Tab screen, the received Event List and Event Information are shown.



■ Event List View

- ① DVR Name: Shows the DVR Name Event occurred.
- ② MAC Address: Shows the DVR MAC Address Event occurred.
- ③ Local Time: Shows the Time Event is received
- ④ Event Type: Shows types of event received as follows.

Event Type	Description
 Motion	Motion occurs
 Sensor	Sensor occurs
 Warning	Camera Warning occurs Password Warning occurs HDD Warning occurs: Full, Smart, Fail, RAID Fail
* Alive	Reports the appropriate DVR is operating (Once an hour)

⑤ Information: Shows the Camera information of the Event received.

- 1 2 3 4 5 6 7 8 9 10 11 12 13 14 15 16 : The Cameras that Event occurred are displayed in red
- CH-06 : Indicates the Label of the Camera Motion occurred (in case of Login Event)











Note



- *Login Event: The Event occurred while ISNET is connected to DVR is always transferred to ISNET through Login Event.*
- *AAC Event: If IP Address of local PC in which ISNET is installed is registered as the Alarm Server of DVR, more detailed Event information than that of Login Event is transferred through AAC Event.*
- *In the Event List, AAC Event Message is displayed in blue and Login Event Message in black.*

■ Event Information View

Further information on the Event Message selected from the current Event List is shown as follows:

- ① Model/Version: Model name and Version information of the DVR where Event occurred
- ② Temperature: Temperature inside the DVR where Event occurred
- ③ Internal/External HDD: Total and Residual HDD Capacity of the DVR where Event occurred
- ④ Camera Input: Camera input information of the DVR where Event occurred
 -  (Blue): Camera normal input
 -  (Gray): Camera loss
- ⑤ Record Video: Video Camera under recording in the DVR where Event occurred
 -  (Blue): No recording
 -  (Red): Under recording
- ⑥ Record Audio: Audio Camera under recording in the DVR where Event occurred
 -  (Blue): No recording
 -  (Red): Under recording

-
- ⑦ Motion Detection: Video Camera motion detected in the DVR where Event occurred
 -  (Blue): No motion
 -  (Red): Motion detected

 - ⑧ Sensor Input: Sensor Input Camera of the DVR where Event occurred
 -  (Blue): No Sensor input
 -  (Red): Sensor input

(3) Event View

This is the function to monitor the Camera of the DVR where Event occurred.

(a) Event View from the Main-Monitor

- If an Event occurred in the DVR set as Event Live View, it automatically moves to the [Event] – [View Screen] of the Main Monitor.
- If Motion Event occurred, the video image of the Camera that the Event occurred will be displayed during the time set as Duration in 1-Split screen.
- If Events of Sensor, System Warning, Camera-Loss occurred, video image of all Cameras of DVR will be displayed during the time set as Duration.
- If Events have successively occurred, only the latest event will be displayed.

(b) Event View from Multi-Monitor

- In case Event Screen is set from Multi-Monitor, if an Event occurs, the Event image set to Full Screen of the setup monitor will be displayed during the time set as Duration.
- If Events have successively occurred, max. 16 Event View screens will be displayed for 10 seconds in order.
- If 16 events or more have successively occurred, it will be replaced by the Event View screen with the shortest Duration time.



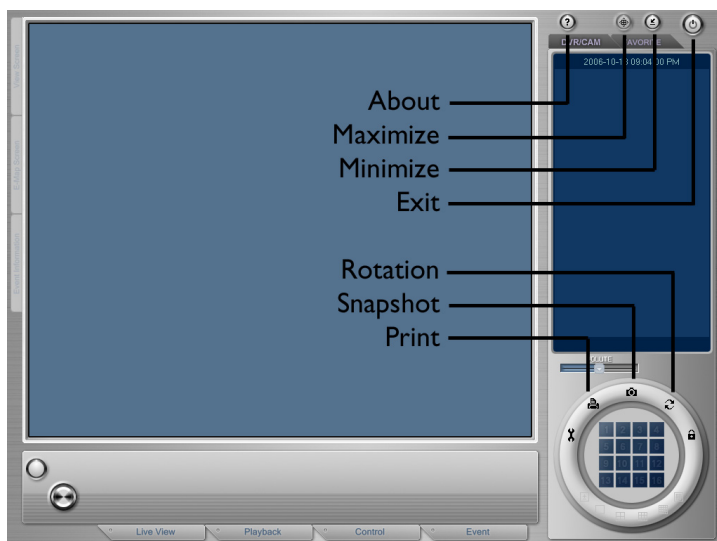
Note

- For Event Live View setup, refer to the Event item in Configuration.
- If Duration time is short, Event image may not be displayed.
- Since the Event Live View displays the image transferred to network, the time to display the image may be delayed depending on the network situation.

(4) AAC Server Setup

To receive AAC Event, IP Address of local PC that ISNET is installed should be registered as the Alarm Server of DVR. For more detailed Alarm Server registration, please refer to DVR User's Manual [Chapter 4. DVR Setup - Network Setup - To set the Address of Alarm Server].

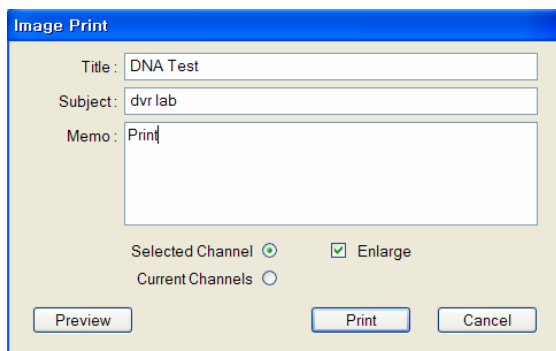
6. Other Instructions for use



(1) Print

The entire screen or the image of selected Camera can be printed out with the text.

- ① Click the left mouse button on the desired Camera and then choose the **[Print (🖨️)]** button.
- ② When the “**Image Print**” window appears, enter **[Title]**, **[Subject]**, **[Memo]** items.
- ③ To print out the selected Camera, click on the **[Selected Camera]** Check box, while click on the **[Current Cameras]** Check box to print out the current entire screen. If you choose the **[Selected Camera]**, you can enlarge/reduce the image to print out by using the **[Enlarge]** Check box.



- ④ Click the **[Preview]** button to view the screen to be printed out previously.

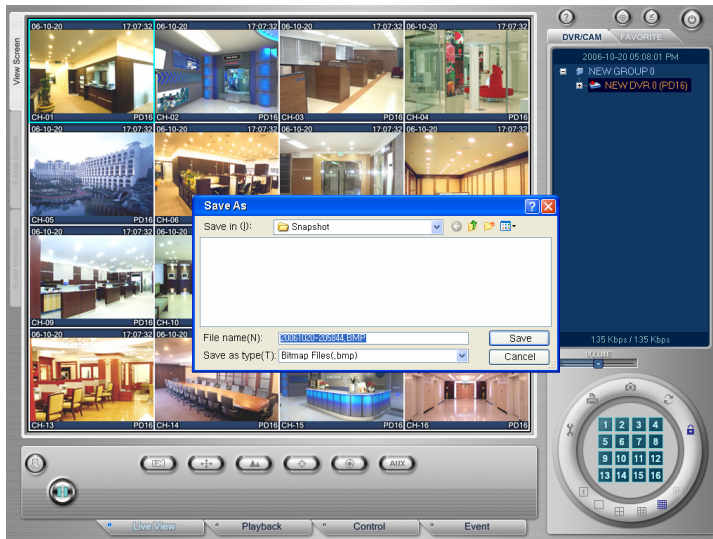


- ⑤ Press the **[Print]** button to print out the image selected.

(2) Snapshot

If you want to save a specific (part) image of Split Screen as a .BMP or .JPG file, save it as follows:

- ① Click on a desired specific (part) image with the left mouse button and then choose the Save **[Snapshot (📷)]** button. At this time, the frame of the image selected turns blue.
- ② If the Save as Another Name window appears, enter a filename and click the **[Save]** button.



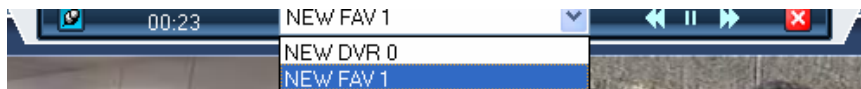
- ③ See **[Chapter 3. How to set ISNET - (11) Option Configuration]**.

(3) Rotation

Select the **[Rotation View (🔄)]** button to monitor DVR, Favorite, Camera in order according to Rotation Configuration setup.



- ① Choose the [Rotation View (↻)] button.
- ② It will be displayed in full screen on the monitor which Rotation function is set up. For more setup information, see [Chapter 3. How to set ISNET – (9) Multi-Monitor].
- ③ [Rotation Tool Bar] appears on the Rotation screen. [Rotation Tool Bar] disappears automatically, and when a mouse is located at the [Rotation Tool Bar] on the monitor, it will appear automatically. If you want to continue to display the [Rotation Tool Bar], select the [Keep Visible (📌)] button.



	Rotation Tool Bar fix
	Remaining Dwell Time of View Point
	View Point List
	Moves to the previous View Point
	Moves to the next View Point
	Pause/Start View Point Timer
	Close Rotation View

- ④ After View Point setup time, it automatically moves from the View Point list to the next View Point.

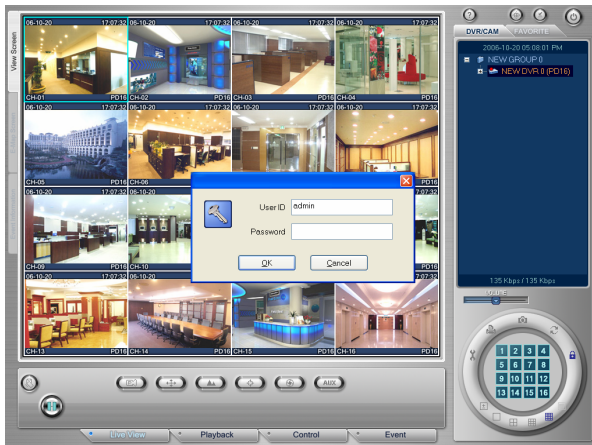


Note

- View Point is shown in the X Split Mode.
- If it consists of DVR or Favorite not assigned to user, it is automatically excluded.
- If there is no View Point list, a warning message appears and Rotation View does not work.
- If the Camera having View Point configuration is not connected or View Point consists of Cameras without user privilege so that may not display an image, it automatically moves to the next View Point.

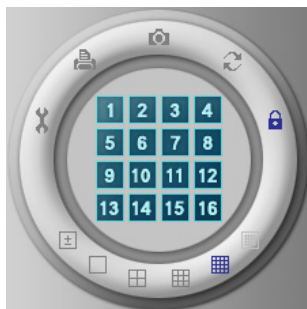
(4) Using Login/Logout Window

- ① Select the [Logout (🔒)] button to prohibit the use of ISNET.
- ② Select the [Login (🔓)] button to release the lock of ISNET and to use it normally. When you select the [Login (🔓)] button, a Login window appears, and when you enter User ID / Password, the lock function of ISNET will be released.



5) Split

There is a group of the following buttons at the right bottom of the screen. When you press these buttons, you can check splitted-screen (X/1/4/9/16/25 Split Mode). However, 25 Split Mode is available when selecting Favorite.



■ Splitting

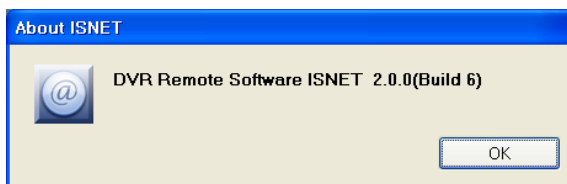
- ① **[X Split Mode (0)]** is the function to configure the screen as the user wants, so you can add/delete a desired screen to configure the screen. This also provides the screen configuration in the optimum split mode.
- ② By using the **[1 Split Mode (□)]**, **[4 Split Mode (田)]**, **[9 Split Mode (田田)]**, **[16 Split Mode (田田田田)]**, **[25 Split Mode (田田田田田)]** buttons, you can configure the screen in desired split screen.

■ To add/delete Camera:

- ① Select the **[X Split Mode (0)]** button and then choose the number buttons for Cameras you want to add/delete in desired order. If the number button is green, it means 'Add', otherwise 'Delete'.
- ② You can check that Camera is configured on the screen in selected order.
For example, when viewing Cameras from #1 to #16 with the Remote View function and assuming that desired screens are for Cameras #1, 5, 9, 3, 16, 10, do the following:
 - Check if the **[X Split Mode (±)]** button is activated. The default value of split button is X-Split.
 - Select the Camera buttons of desired screen in the sequence of #1, 5, 9, 3, 16, 10.
 - It appears as the optimum split of 6 Cameras, that is, 9-Split screen.

(6) About

When you click the **[About (?)]** button at the top right of the screen, you can check the version information of the program.



A User-Level user cannot see **[Check for update]**.

If you select the **[Check for update]** button, you can update to the latest version.

(7) Maximize

To maximize the current screen, press **[Maximize (⊕)]** at the top right of the screen.

(8) Minimize

To hide the screen which is playing, press **[Minimize (☺)]** at the top right of the screen.