

*VIRDI* 450FP  
Fingerprint Identification Door Lock

[www.virditech.com](http://www.virditech.com)

UNION COMMUNITY Co., Ltd.  
5F, Hyundai Topics bldg., 44-3,  
Bangi-dong, Songpa-gu, Seoul, 138-050, Korea  
TEL : +82.2.6488.3000 FAX : +82.2.6488.3099  
URL : [www.unioncomm.co.kr](http://www.unioncomm.co.kr) [www.virditech.com](http://www.virditech.com)



# *VIRDI* 450FP

Fingerprint Identification Door Lock

User's Guide



## About Fingerprint Digital Door lock VIRDI 450FP

Thank you for purchasing the VIRDI 450FP.

VIRDI 450FP utilizes the latest fingerprint technology to ensure controlled access to your home. VIRDI 450FP prevents the use of duplicate keys. Please read the manual before installing the VIRDI 450FP in your door

- Please use VIRDI 450FP after you read a manual and keep it carefully.
- Union Community does not have any responsibility for damage by user's fault.



# Contents

## Before Use

Caution	6
What's in the box?	8
Components	9
Assembling drawing	10
Installation checkpoints	11

## Virdi 450FP

Features and Functions	12
Before use	15
Fingerprint checkpoint	16

## Home mode

### 1. Registration

Initial user registration	18
Initial password registration	20
Fingerprint registration	22
Fingerprint deletion	23
Changing password	24
Password deletion	25

### 2. Door access

Access using fingerprint	26
Access using password	27
Access by emergency key	28
Access by security password	29
To lock door	30
To exit door	31

### 3. Functions

Security password set-up	32
Security password deletion	33
Disabling open/close button	34
Enabling open/close button	35
Forced lock	36
Automatic close and manual close function	37
Fingerprint test	38
Initializatio	0

## Office mode

### 4. Registration

Initial master registration	42
Master or user's fingerprint deletion	43
Adding further master fingerprint	44
Master or user's ID deletion	45
User registration	46
User's ID deletion	47
Initial password registration	48
Password deletion	49
Changing password	50

### 5. Set-up

Security password set-up	52
Security password deletion	53
Fingerprint test	54

### 6. Door access

Access using fingerprint	56
Access using password	57
Emergency key access	58
Access by security password	59
To lock door	60
To exit door	61

## Appendix

Menu setup for home use	62
Menu setup for office use	64

# Caution



Please read manual before using VIRDI 450FP

## Safety

Please follow the safety instructions.

## Caution

Please follow these instructions to ensure reliability of VIRDI 450FP.

-  The sign is a "Prohibition"
-  The sign is that user should keep the manual

## Safety

### Caution

Please read manual before using VIRDI 450FP.



### Caution

Do not attempt to change or fix equipment.

May damage and electric shock of the equipment. Please call A/S center for the required.



### Warning

Check polarity of batteries when replacing.

If battery polarity is not placed at right position, it is caused of the battery burst or internal leakage that might be caused fire hazard or malfunction. Please make sure to use right size batteries and do not use combination of used batteries with new ones.

### Prohibition

Keep the equipment out of children's reach.

It might be caused of accident or equipment to malfunction.



### Caution

Dry hands before use.

May damage and electric shock of the equipment.



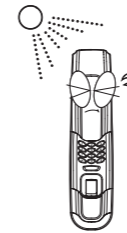
### Caution

Keep emergency key in a secure place outside your home.



## Caution

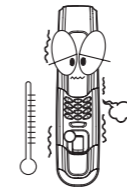
Do not install in full sunlight.



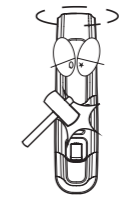
Do not install in dusty or humid place.  
Might be caused of malfunction.



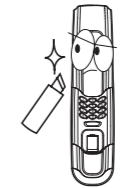
Do not install where there is a severe temperature variance.  
Might be caused of malfunction.



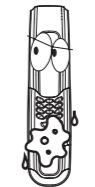
Do not expose to strong shock.  
Might be caused of malfunction as taking damage.



Do not use sharp instruments on the lock.  
Might be caused of malfunction.



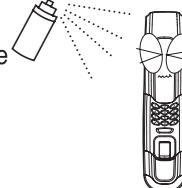
Do not keep fingerprint sensor clean at all times.  
If not, it might not identify fingerprint properly.



Do not clean with water or alcohol.  
Might be caused of fire and electric shock.



Do not spray with flammable liquids.

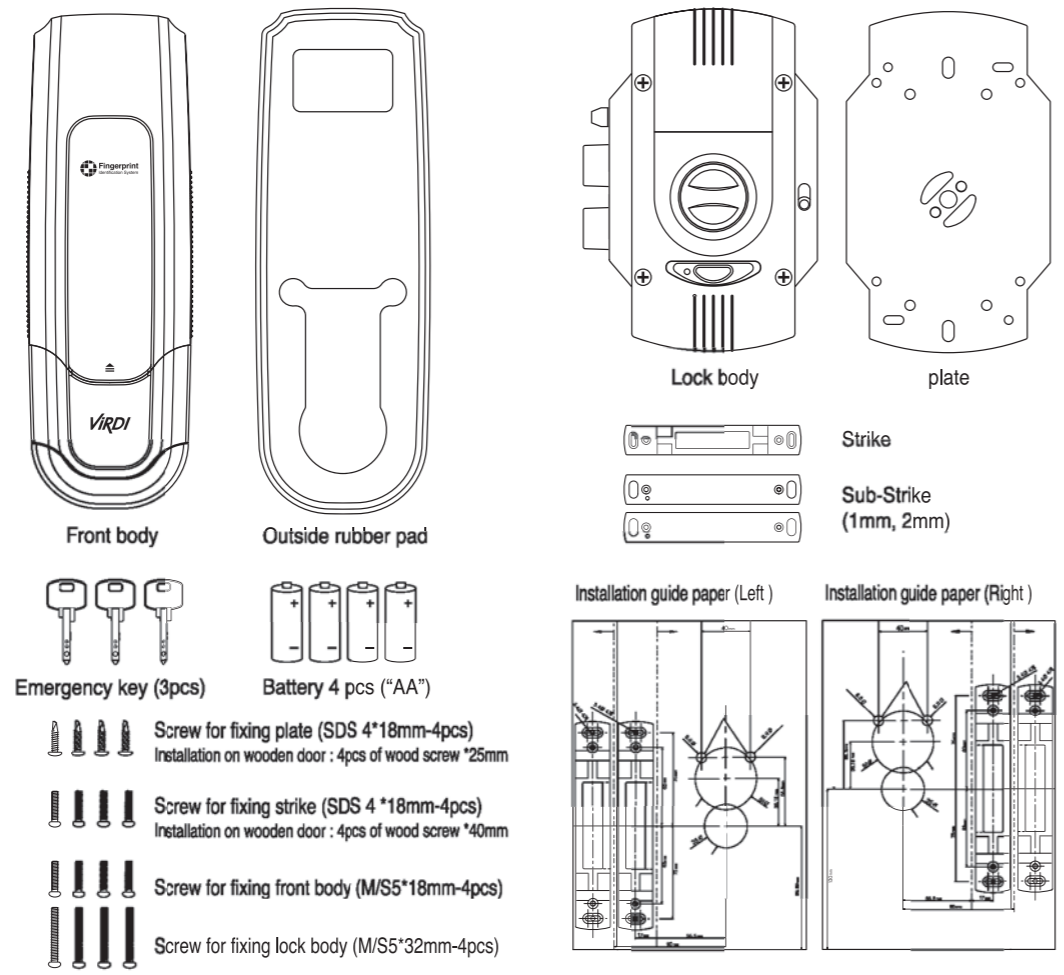


Do not read the operators manual, any damage caused due to misuse will be the user's liability.

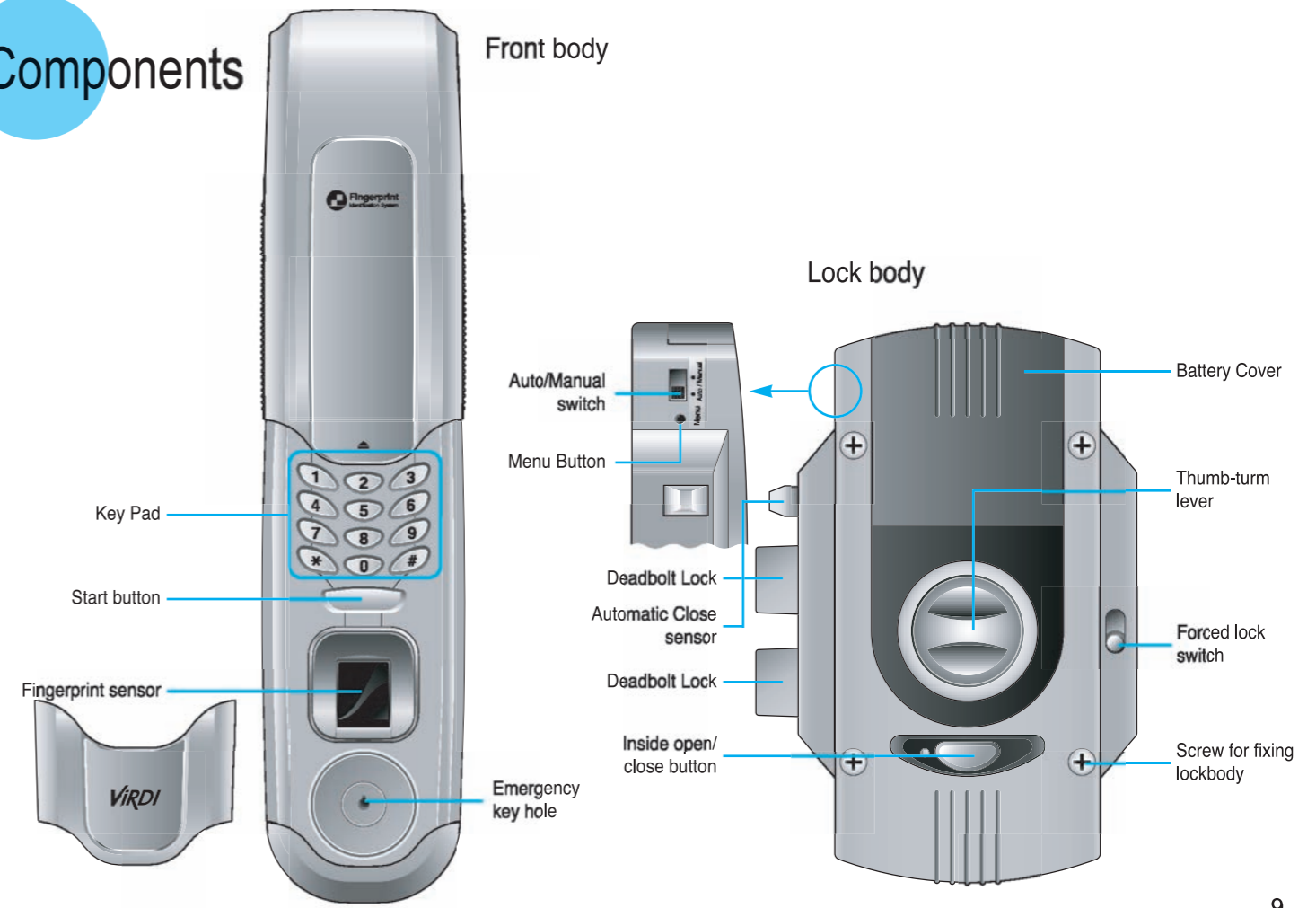


# What's in the box?

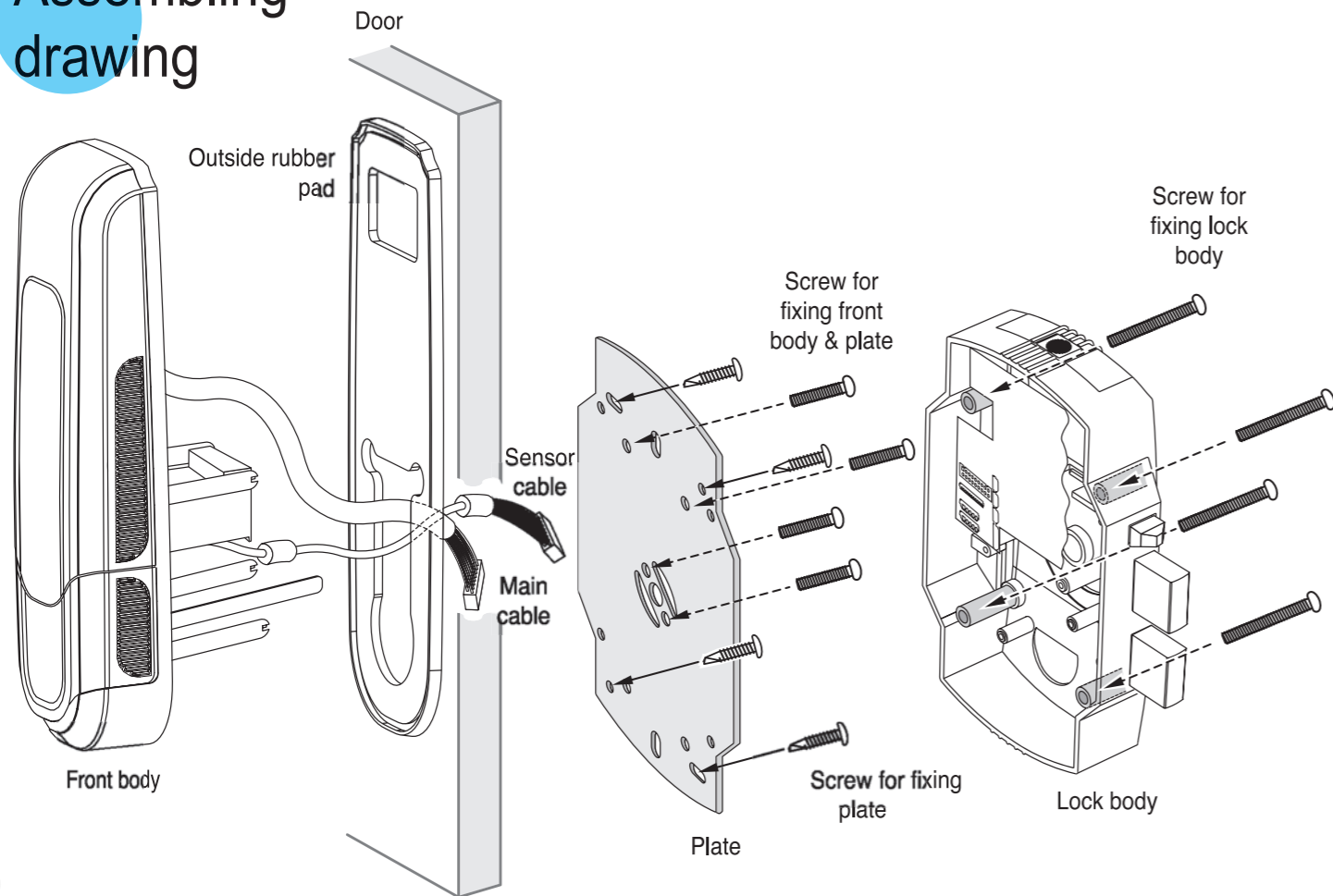
Please check all parts are in the box



# Components



## Assembling drawing



## Installation checkpoints



- VIRDI-450FP is a **additional** lock type **installed** on the door.
- If door is reinforced glass, this lock cannot be installed .
- Ensure door surface is smooth.
- Ensure there is room to install the lock and bolt fitting.
- If used on a swing door, please fix one side of the door before fitting.
- It is possible to install on wooden door, But a user's attention is required for reliable installation at wooden door.
- Please **note** if you **remove the lock**, a hole will **be left in the door**.
- Please **ensure** you have a **secure password** after the installer has finished.
- We cannot be held responsible for insecurity of passwords.

# Features and Functions



## Fingerprint capacity

Home mode	Office mode
30EA Fingerprint templates	Master : 5EA Fingerprint templates User : 25EA Fingerprint templates

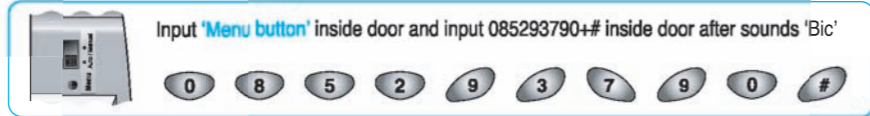
- VIRDI 450 will “beep beep” if you try to register more than the allowed number.

## Home & Office mode

VIRDI 450FP is simple to change from home mode to office mode.

### [The features of office mode]

- Identifies masters and normal users.
- Masters can only control and set up unit.
- User registration and deletion. (2 digit user ID)
- Fingerprint verification after ID input.
- Please note VIRDI 450FP will reset when switched to and from home and office mode.
- Please input the following code to change to and from office and home mode.



## Open & close function disabled

Prevents internal door open features from working. (Refer to 34 Page)

## Back Light

Keypad is illuminated.

## Password and fingerprint storage

Non-volatile storage to allow battery replacement without losing data.

## Open door security

If door is not opened within 10 seconds after identification, door automatically locks itself. To manually lock the door from the outside press the start button, from the inside press the open/close button.

## To act as a standard door

To use as a standard door with out access control please select auto/manual to manual. Manual mode removes all security at the door. Push start button to close the door from the outside. (Refer to 37 Page)

## Emergency alarm

VIRDI 450 FP stops operation after 10 warning beep, if the door is not closed properly or there is a fault in the unit. Please contact your installer if the fault is not cured after closing the door properly.

# Features and Functions

# Features and Functions



## Fingerprint test

To check a fingerprint can be registered. (Refer to 38 Page)

## Low Battery alarm

Low battery is indicated by the start button flashing red with the buzzer giving 4 beeps. Flashing led on the inside next to the open/close button. All function controls stop when low batter is indicated.

## Changing the batteries

Remove the battery cover and replace the four AA batteries.

Please check polarity before fitting.

- If the battery is low-level of electric, The start button is twinkling with red color and ringing beef sound. When user tries to be authorised, please change the battery after open the inside battery cover.
- After the battery is electric discharge user can not enter the door, please change the battery after entering the door with emergency key.

## Door access with password before set-up

Please use the following password after delivery or reset.

- When a user purchases system at first time.
- When system is reset.
- When there is no fingerprint & password data.

Default password \* 0 0 0 0 0 \*

- To confirm the VIRDI 450FP has been reset press the start button, if you hear 3 beeps it is re-set.
- Please ensure you change the default password after installation.  
**Please make sure that change password after you install system.**

## Fingerprint registration and deletion

- Register or delete fingerprint with door open.
- Please look around before register password due to password protection.

## Input time delay

- If no input is made within five seconds the buzzer will beep and return to standby.
- Stand-by time for input is 5 sec. (Numeric keypad)
  - Stand-by time for input is 10 sec. (\*, #) related on fingerprint & password.

# Before use



## Fingerprint check point



### How to place fingerprint

Please register your index finger. Please ensure the fingerprint is in the centre of the sensor and is flat on the glass.



### Please register your index fingerprint

If using the index fingerprint data are more accurate and secure.

### Please check if the fingerprint is faint or damaged

If you have dry fingerprint, damp fingerprint, faint or damaged fingerprint, these can cause problems with registration please use different fingerprint.



### Fingerprint problems

In according to user's fingerprint status, The user can not register his/her fingerprint in VIRDI 450FP or might have some problem to use VIRDI 450FP.

- If you cannot use fingerprint, please use password with dry fingerprint, please huff on them.
- To recognize a dried fingerprint clearly, please make it humid a little.
- Children should be re-registered every six months. Very young children cannot be registered.
- Old age causes the fingers to wrinkle this can prevent registration.
- Please register 2 or 3 fingerprints if you have problems.

## Check point of Fingerprint

# 1.Registration

## 1-1 Initial user registration

Please follow the following steps to register your fingerprint for the first time.



Push **'Menu' button** located in lock body.

“Bic”



Push the button.

“Beriric”

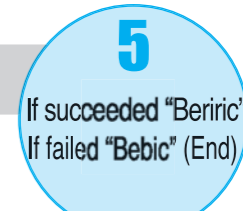


Input your fingerprint during 3 sec. on the sensor when LED is on.

“Beriric”



Input it again when LED is on after hearing the “Beriric”.



If succeeded “Beriric”  
If failed “Bebic” (End)

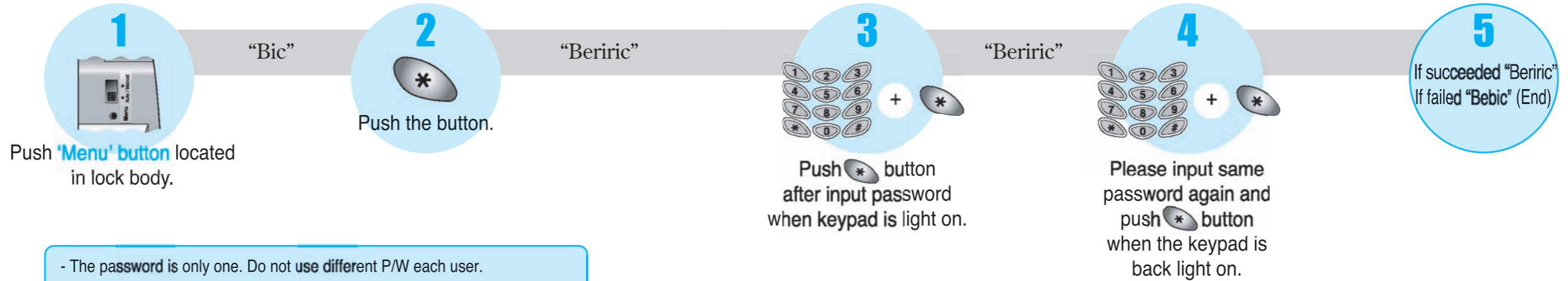
- To register a fingerprint, A user has to input his fingerprint twice on the sensor.
- During fingerprint registration, Please make sure that put the same fingerprint on the sensor. During registration process, If the fingerprint registration process is failed, The VIRDI 450FP goes back to the start after the sound “Bebic”.
- Before registering fingerprint, Please check fingerprint condition such as being sweat, dry or dirty.
- When the fingerprint registration is failed, please try it again after make it humid a little.
- Please input battery 4pcs (AA-Type) on right position(+, -) of battery case before registering user's fingerprint and password. (Refer to 14 page )

# 1.Registration



## 1-2 Initial password registration

Please follow the following steps to register your password for the first time.



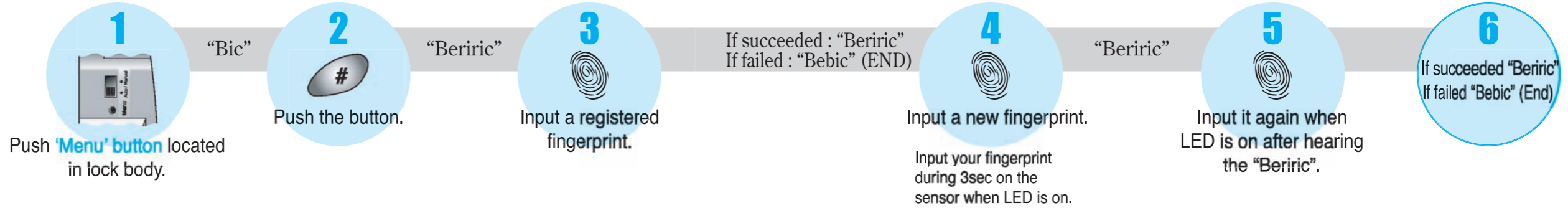
- The password is only one. Do not use different P/W each user.
- To keep the security, please change password periodically.
- Password capacity (Minimum 4/Maximum 20 digit.)  
For security, Please make password more than 8 digit.
- Registered password “00000” is not considered as password.
- If the password registration is failed, The VIRDI 450FP goes back to the start after the sound “Bebic”.
- To finish registering password, Push the **\*** , **#** button together.

# 1.Registration



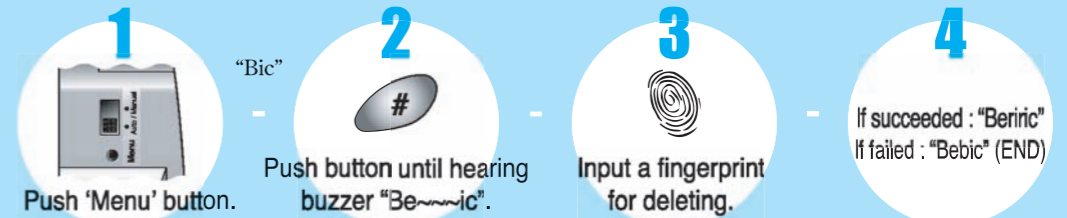
## 1-3 Fingerprint registration

To register a new fingerprint an registered user must authorise.  
Please follow the following steps to register a new fingerprint.



- To register a fingerprint, A user has to input his fingerprint twice on the sensor.
- During fingerprint registration, Please make sure that put the same fingerprint on the sensor. During final registration process, If the fingerprint registration process is failed, The VIRDI 450FP goes back to the start after the sound "Bebic".
- Before registering fingerprint, Please check the fingerprint condition such as being sweat, dry or dirty.
- When the fingerprint registration is failed, please try it again after make it humid a little.

## Registered Fingerprint deletion

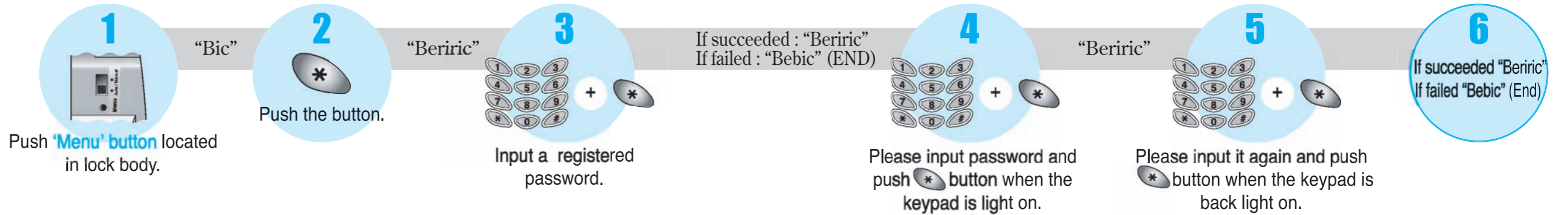


# 1.Registration



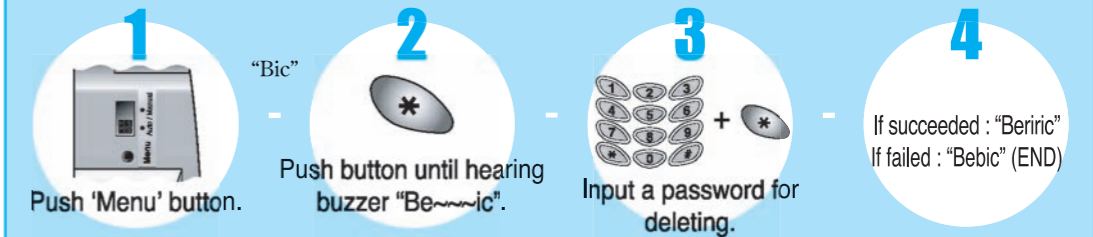
## 1-4 Changing password

It is possible to change password when password already registered in system.  
(Refer to 38 Page)



- Only one password is allowed.
- Please change regularly to ensure security.
- Password can be 4 to 20 digits, for good security, please use more than 8 digits.
- Do not use just "00000" given as default password. It will be deleted.
- When password is registered, if password fails Virdi will return to start.
- To finish registration, please push **\*** , **#** buttons together.

## Password deletion

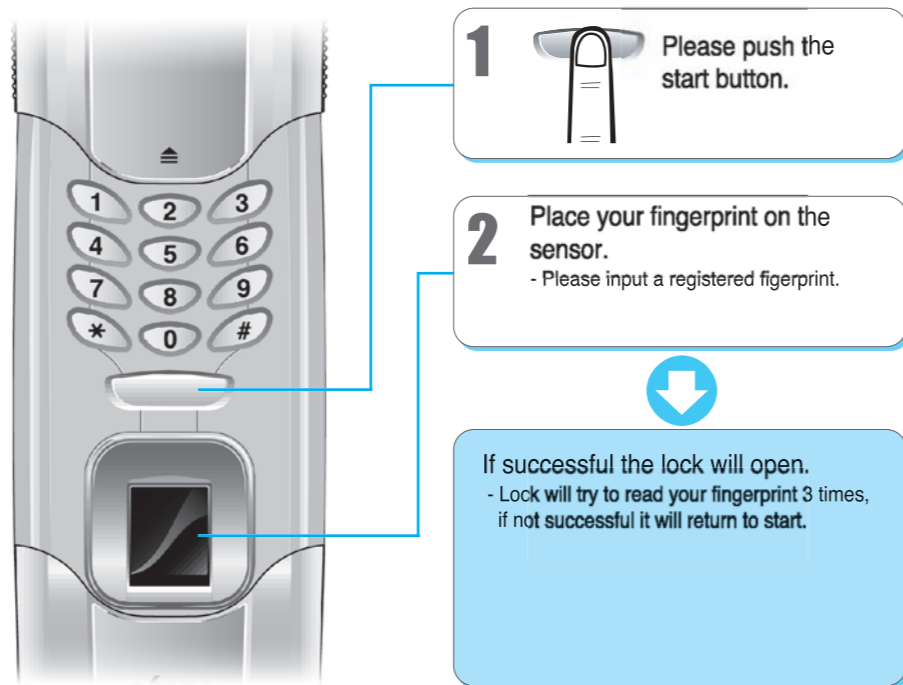


## 2. Door access



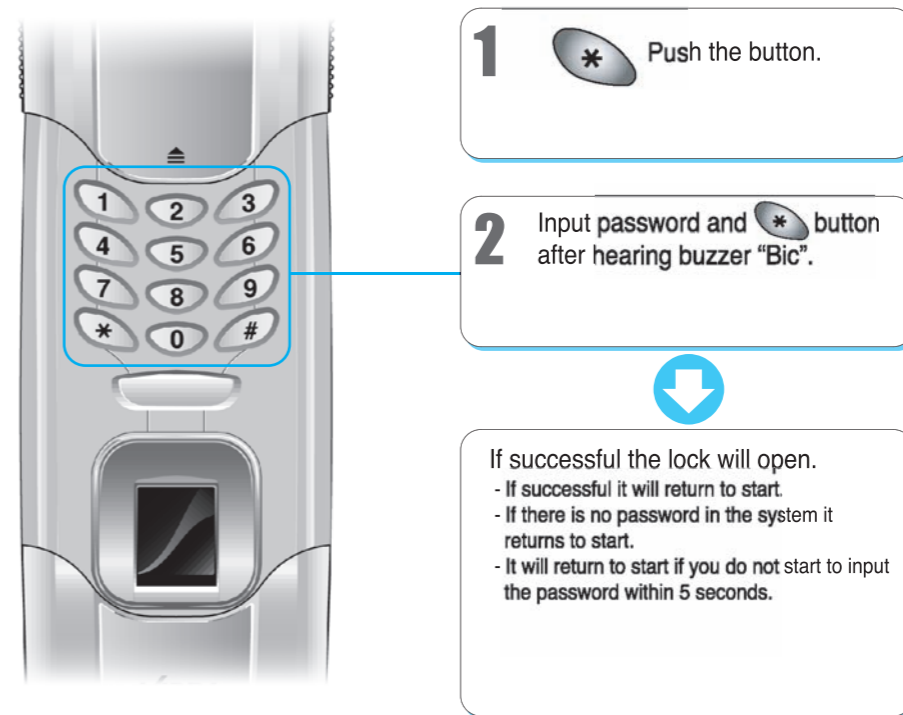
### 2-1 Access using fingerprint

To go inside...



### 2-2 Access using password

To go inside...



## 2. Door access



### 2-3 Access by emergency key

To enter...



User can open the door with emergency key.  
- Please keep an emergency key in safe place.

### 2-4 Access by security password

Please refer to Page 32 for security password setup/deletion.



**1** \* Push the button.

**2** Input security password and push \* button after hearing buzzer "Bic".



If succeeded, The Lock is opened twinkling the blue LED with ringing buzzer "Beric".

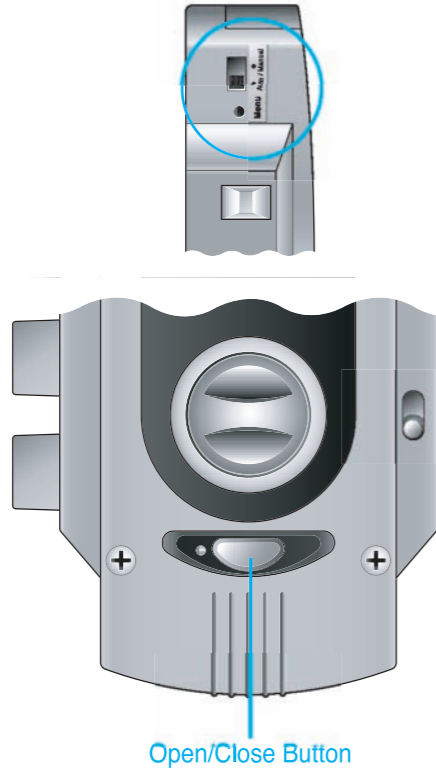
- If successful the lock will open.
- If not successful, it will return to start.
- If security password is set-up, access is not available by password or fingerprint.
- Door Open/Close is disabled.

## 2. Door access



### 2-5 To lock door

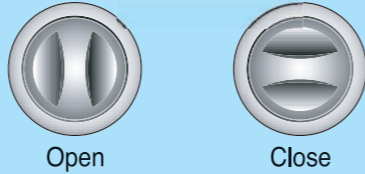
To lock door from inside...



When Auto/Manual switch is in auto position, door is locked automatically.

When Auto/Manual switch is in manual position, press Open/Close button or rotate Open/Close lever.

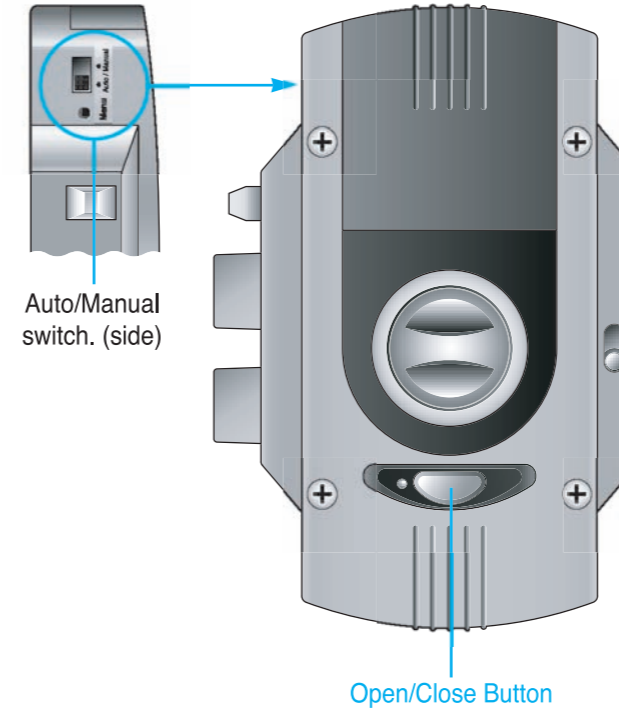
Manual Open/Close lever



Open/Close Button

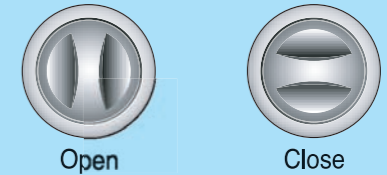
### 2-6 To exit door

To unlock door from inside...



**1** Push the Open/Close button or turn the manual Open/Close lever.  
- Press Open/Close button or rotate Open/Close lever. Open/Close button will not work if security password is in operation. (refer to 34 Page)

Manual Open/Close lever



When Auto/Manual switch is in manual position.



- Ensure door is locked by press start button.

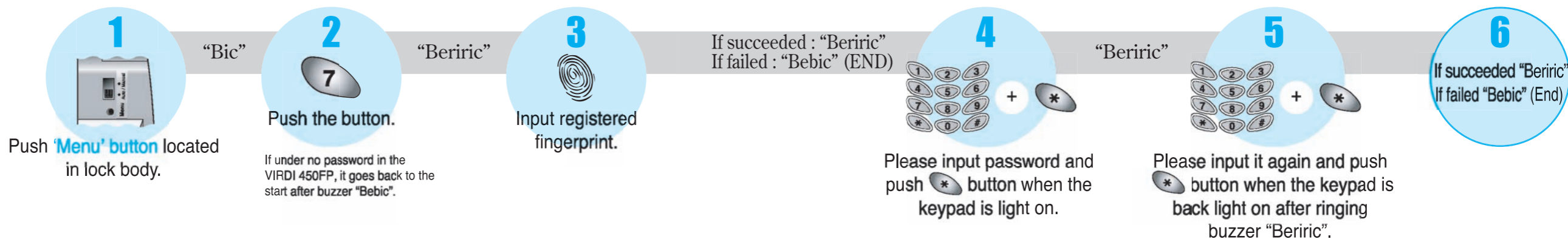


# 3.Functions



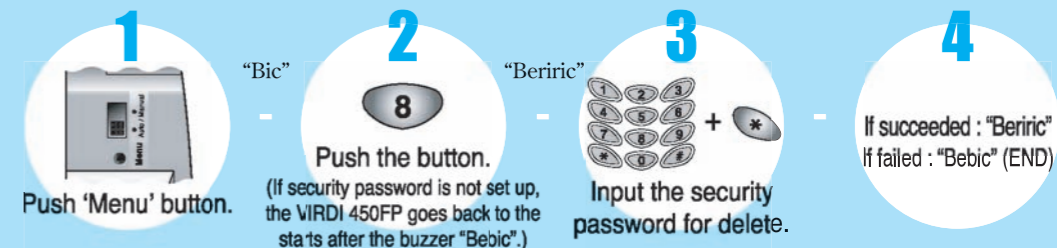
## 3-1 Security password setup

If you are away for a long period please use security password, this prevents misuse of lock.



- Only register fingerprint can set security password.
- Password can be 4 to 20 digits, for good security please use more than 8 digits.
- Do not use just "00000" as a password.
- If password fails Viridi will return to start.
- To finish registration, please push \* , # buttons together.
- In security password mode, fingerprint or passwords do not function.
- All set-up procedures are disabled.
- Open/Close button is disabled.

## Security password deletion

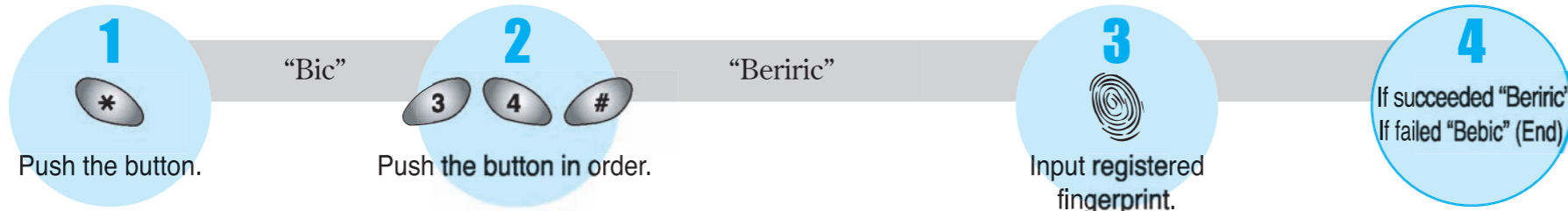


# 3.Functions



## 3-2 Disabling for Open/Close button

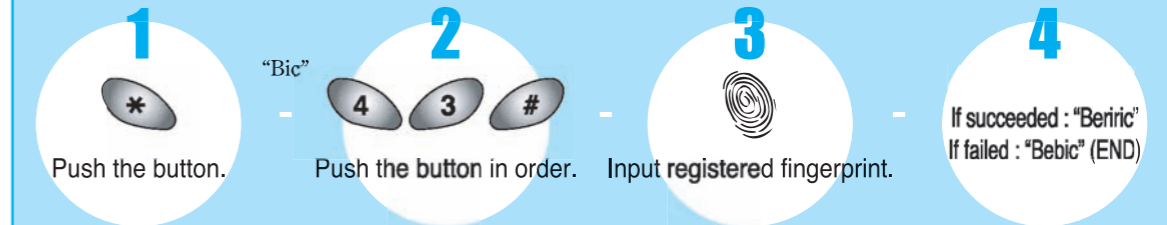
This function disables the Open/Close button.



If Open/Close button is disabled VIRDI 450FP returns to start.  
If security password is set this feature does not function.

- If this function is set up, it is ringing buzzer “Beriric”.
- If security password is set up, automatically this function is set up.
- During set up, if want to stop the process, please push \* , # button together.

### Enabling Open/Close button

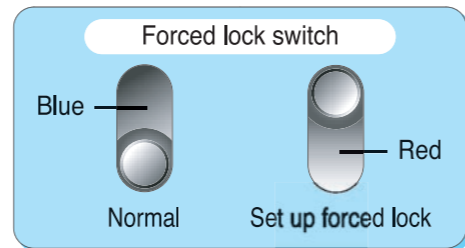
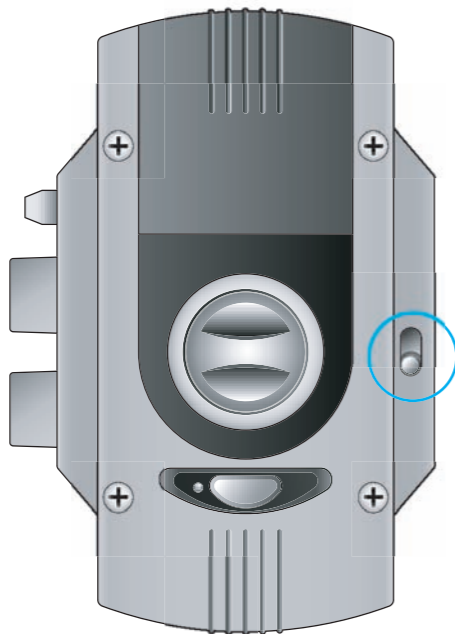


- If not set to disabling Open/Close returns to start.
- If security password is set this feature will not function.

## 3.Functions

### 3-3 Forced lock

If this feature is selected, no access is allowed.



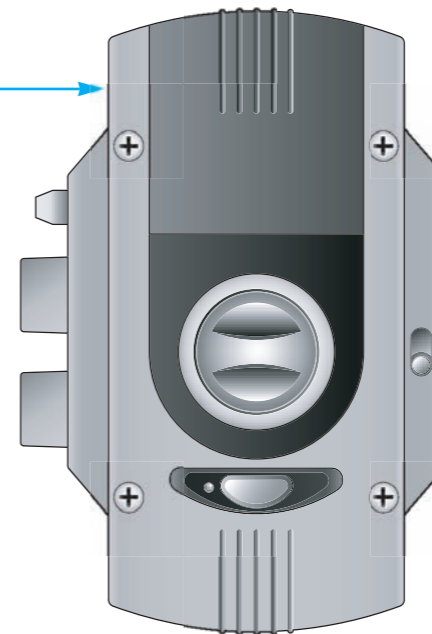
If forced locking is set, pressing the start button lights blue and red LEDs and buzzer sounds from 2 secs.

### 3-4 Automatic close and manual close function

When door is closed, automatically locking it ON.



Auto/Manual switch (side)



#### Automatic close function

Auto-close automatically locks the door when closed.

#### Manual close function

To use as a standard door without access control please select Auto/Manual to manual.



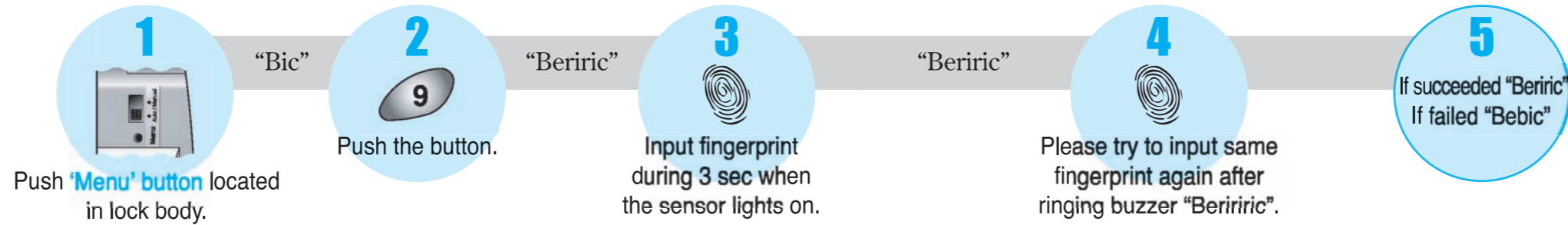
- Manual mode removes all security at the door.
- Ensure door is locked by pressing start button.

## 3.Functions



### 3-5 Fingerprint test

This is to test Fingerprint condition of user.



- Before testing fingerprint please refer to pages 16 and 17 on Fingerprint checkpoints.

- After test is finished, if user wants to register fingerprint, please register fingerprint in order after push button.
- To finish the test, press button together at one time.
- To the next fingerprint test, Press button.

## 3.Functions




### 3-6 Initialization

To initialize the VIRDI 450FP.

**1**  Push '**Menu**' button located in lock body.



**2** Push the following number in order after ringing buzzer "Bi~~~~c".





If succeeded : "Berirc"  
If failed : "Bebic" (END)

- To finish the test, press \* , # button together at one time.
- To check the initialization of VIRDI 450FP, when you push the button, it is ringing buzzer 3 times "Bibic".

## 'Office mode'

Identifies masters and normal users after master registration, only master can control and setup VIRDI 450FP.



- Master Fingerprint : 5EA Fingerprint templates,  
User Fingerprint : 25EA Fingerprint templates.
- User registration & user ID deleting (2 digit user ID).
- When changing to office mode all fingerprints have a unique 2 digit ID.
- Please note VIRDI 450FP will re-set when switched to and from home mode and office mode.
- Enter the following to change to and from home mode or office mode.



- Input '**Menu**' button' located at inside operation part after sounds "Bic".

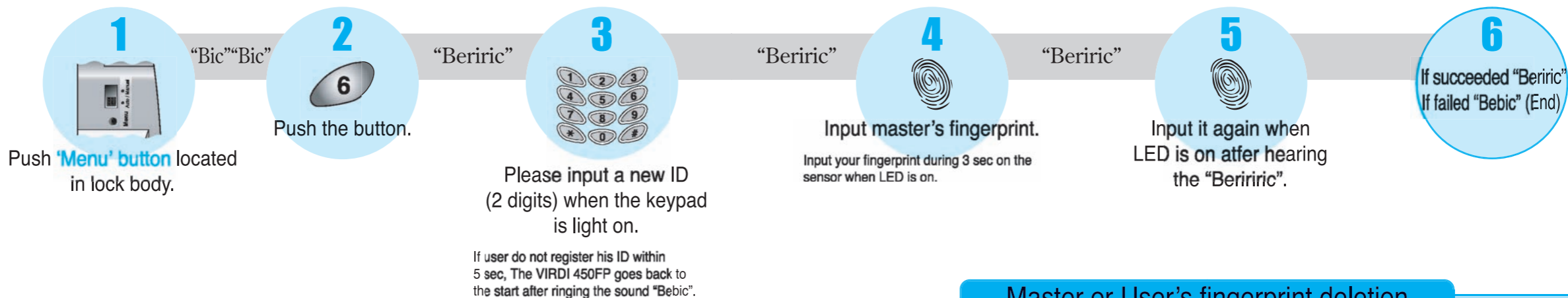


# Office mode



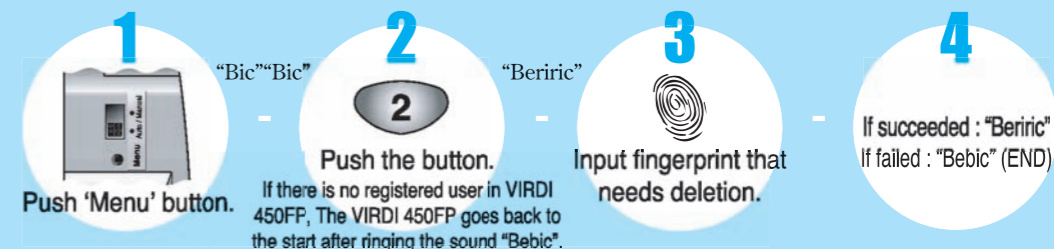
## 4-1 Initial master registration

Master can register 5 templates.



- User has to input fingerprint twice on the sensor.
- Please ensure you use the same finger each time.
- Please check your fingerprint as advised on page 16.

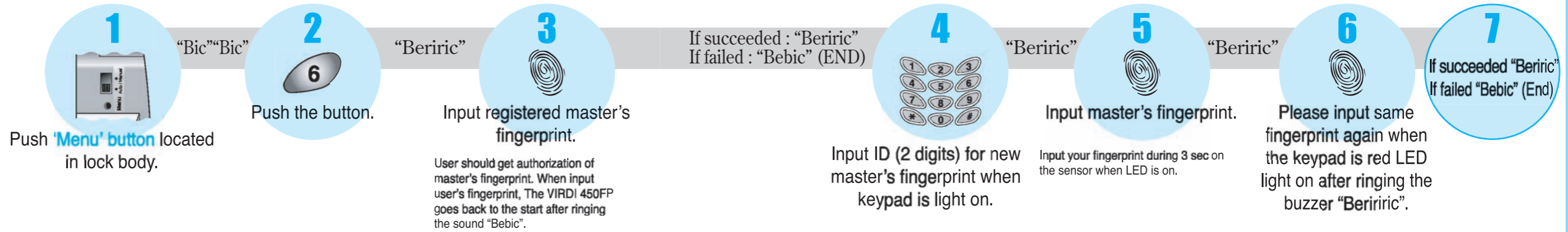
## Master or User's fingerprint deletion





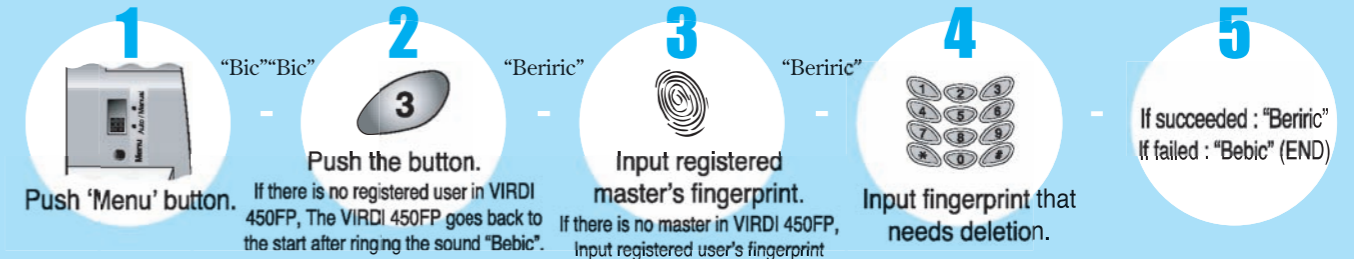
## 4-2 Adding further master fingerprint

Up to 5 masters can be registered.  
You need an registered master to authorise for new master registration.



- User has to input fingerprint twice on the sensor.
- Please ensure you use the same finger each time.
- Please check your fingerprint as advised on page 16 .

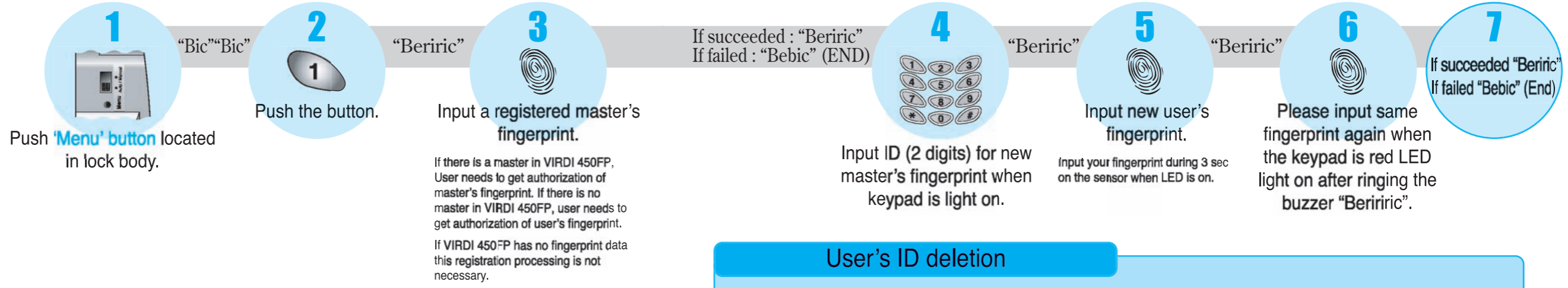
## Master or User's ID deletion



# Office mode

## 4-3 User registration

User fingerprint templates can be registered up to 25 templates in office mode.



- User has to input fingerprint twice on the sensor.
- Please ensure you use the same finger each time.
- Please check your fingerprint as advised on page 16.
- If the new ID is already being used system will go back to start.

## User's ID deletion



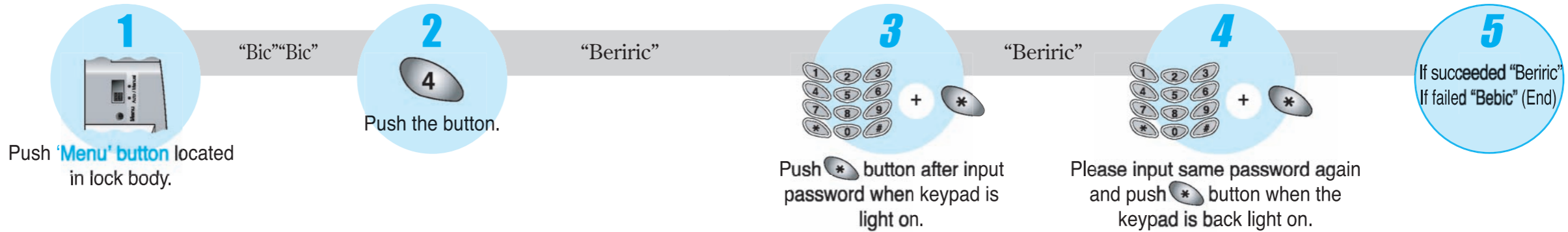


# Office mode



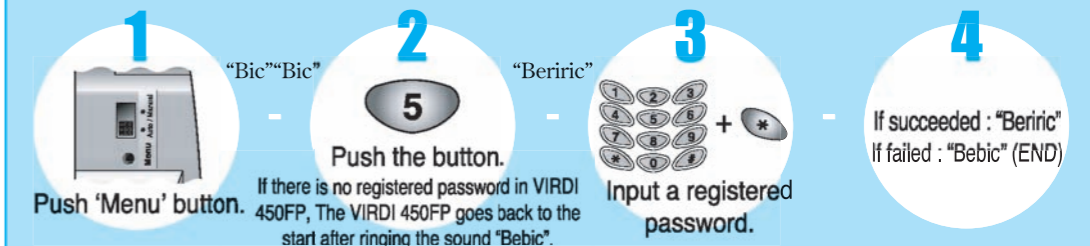
## 4-4 Initial password registration

Please follow the following steps to install initial password.  
User can just use password to gain access.



- Only one password is allowed.
- Please change regularly to ensure security.
- Password can be 4 to 20 digits for good security. Please use more than 8 digits.
- Do not use just "00000" given as default password. It will be deleted when password is registered.
- If password fails VirDI will return to start.
- To finish registration please push \* , # buttons together.

## Password deletion

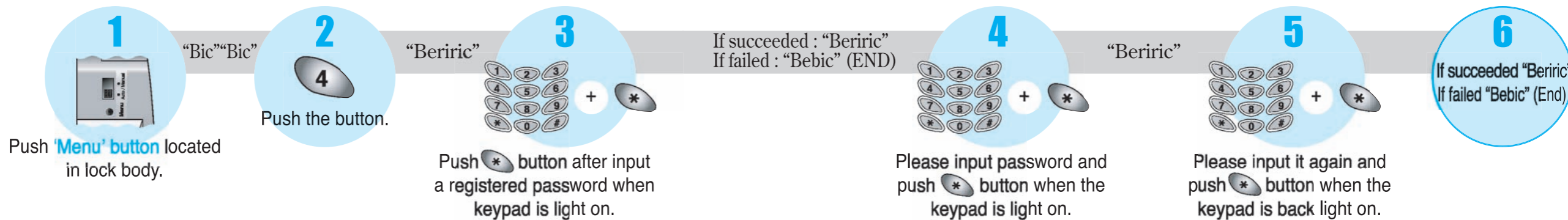


# Office mode



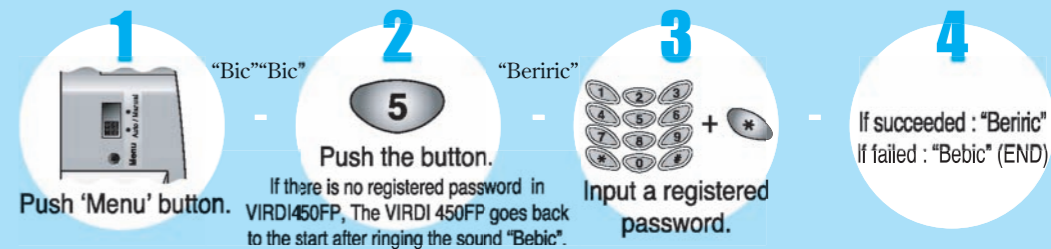
## 4-5 changing password

It is possible to change password when password already registered in system. (Refer to 20 page)



- Only one password is allowed.
- Please change regularly to ensure security.
- Password can be 4 to 20 digits, for good security please use more than 8 digits.
- If password fails VirDI will return to start .
- To finish registration please push \* , # buttons together.

## Password deletion

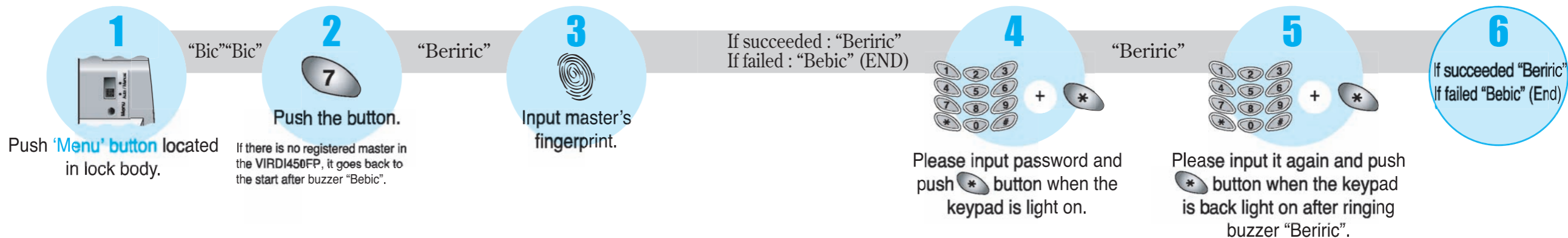


# Office mode



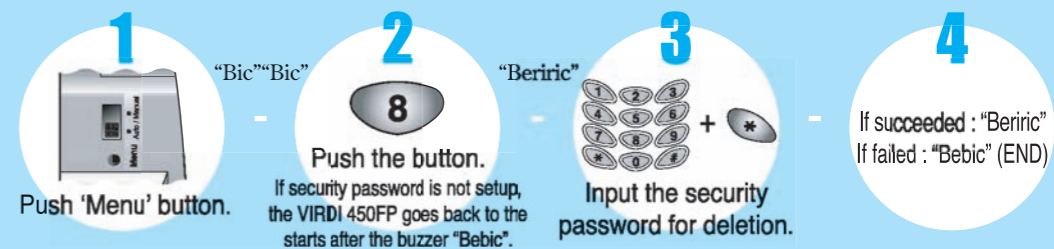
## 5-1 Security password setup

If you are away for a long period please use security password.  
This prevents misuse of lock.



- Only registered fingerprint can set security password.
- Password can be 4 to 20 digits for good security. Please use more than 8 digits.
- Do not use just "00000" as a password.
- If password fails VirDI will return to start.
- To stop registration, please push \* , # buttons together.
- In security password mode, fingerprint or passwords do not function.
- All set-up procedures are disabled.
- Open/Close button is disabled.

## Security password deletion

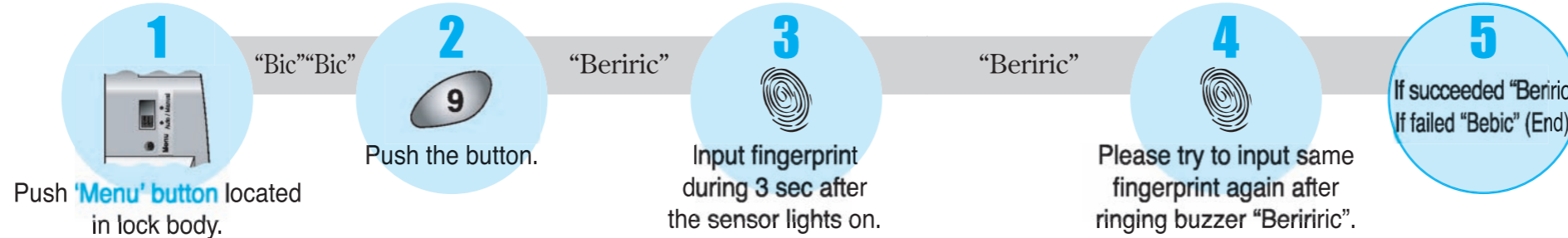


# Office mode



## 5-2 Fingerprint test

This is to test Fingerprint condition of user.



- Before testing fingerprint please refer to pages 16 and 17 on fingerprint checkpoints.

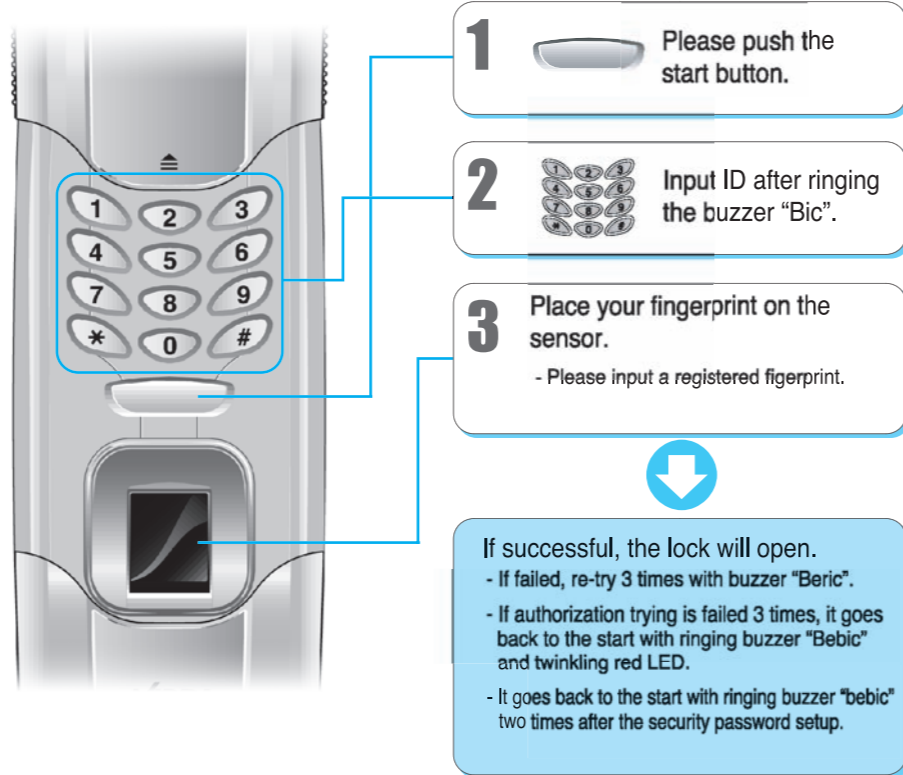
- If user wants to register fingerprint which is finished the test, Please follow fingerprint registration process after push **1** button (user registration), **6** button (master registration).
- To finish the test, press **\***, **#** button together at one time.
- To test **another** fingerprint, repeat the steps again.

# Office mode



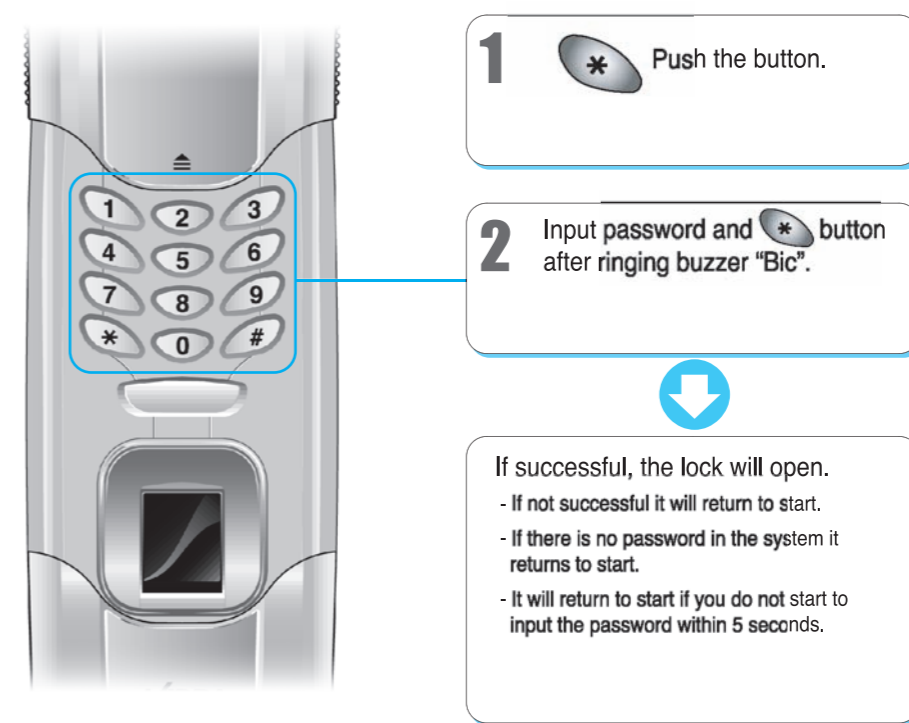
## 6-1 Access using fingerprint

To go inside...



## 6-2 Access using password

To go inside...



## Office mode

### 6-3 Emergency key access

To go inside...



User can open the door with emergency key.  
- Please keep an emergency key in safe place.

### 6-4 Access by security password

Please refer to page 52 for security password set-up/deletion.



**1** \* Push the button.

**2** Input security password and push \* button after ringing buzzer "Bic".



If successful, the lock will open.

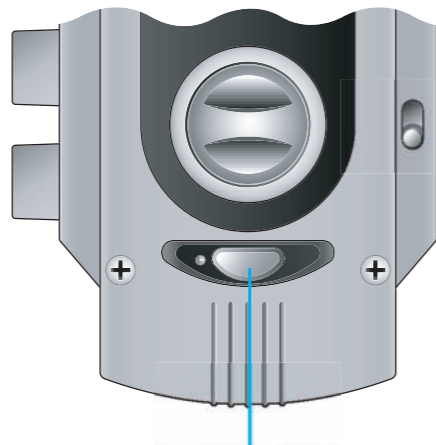
- If successful the lock will open.
- If not successful it will return to start.
- If security password is set-up access is not available by password or fingerprint. Door Open/Close is disabled.

# Office mode



## 6-5 To lock door

To lock door from inside.

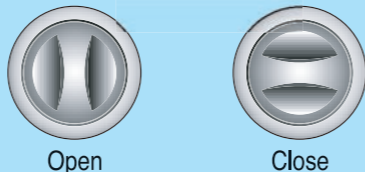


Open/Close Button

When Auto/Manual switch is in auto position door is locked automatically.

When Auto/Manual switch is in manual position, press Open/Close button or rotate open/close lever.

### Manual Open/Close lever



Open

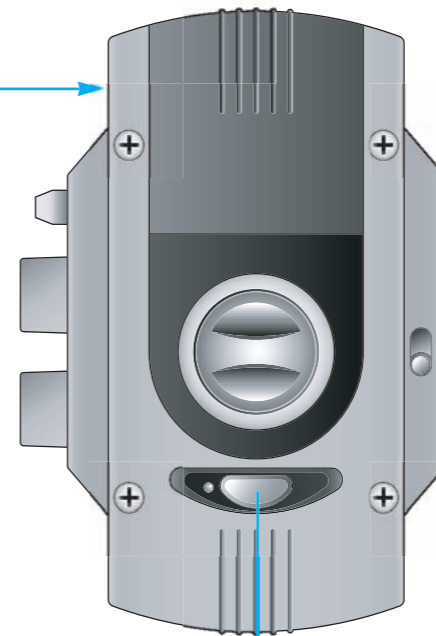
Close

## 6-6 To exit door

To unlock door from inside.



Auto/Manual switch.



Open/Close Button

**1** Push the Open/Close button or rotate the manual Open/Close lever.  
- Will not work if security password is in operation page 34.

### Manual Open/Close lever



Open

Close

### When Auto/Manual switch is located at manual position



- Ensure door is locked by pressing start button.

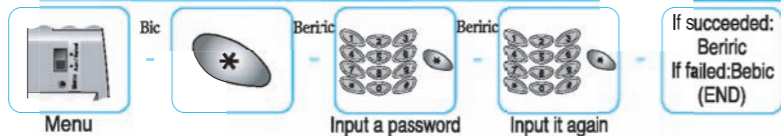
# Menu setup for home mode



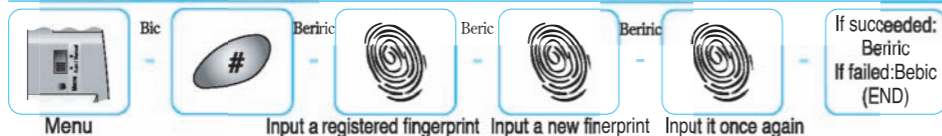
## A user fingerprint registration at initial time 18P



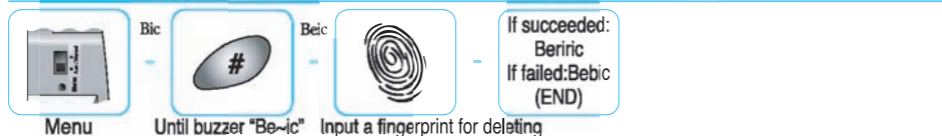
## The initial password registration 20P



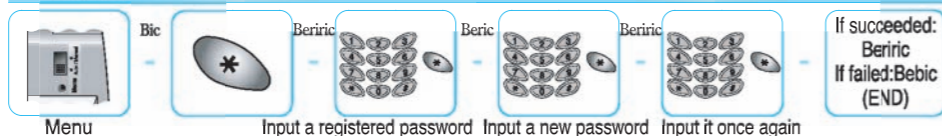
## Fingerprint registration 22P



## Fingerprint deletion 23P



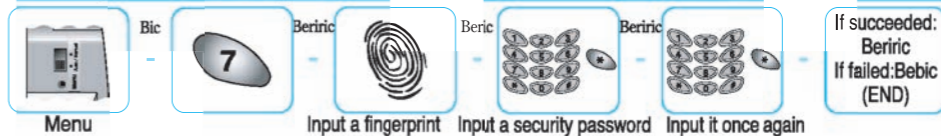
## Password change 24P



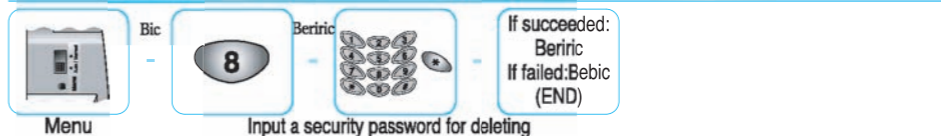
## Password deletion 25P



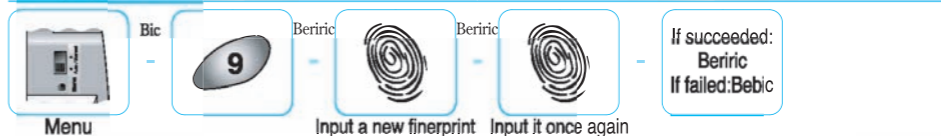
## Security password set up 32P



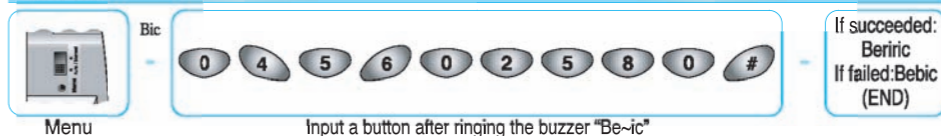
## Security password discharge 33P



## Fingerprint Test 38P



## Initialization 40P





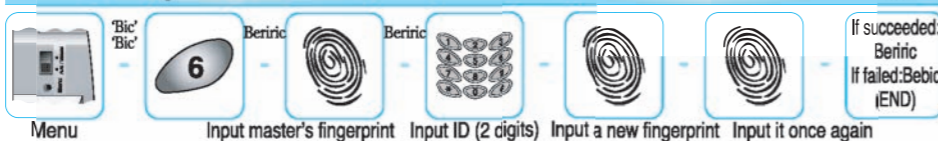
# Menu setup for office mode



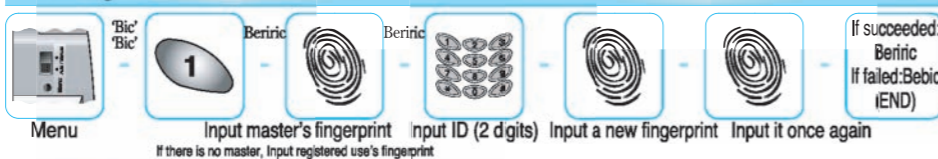
## A master registration at initial time 42P



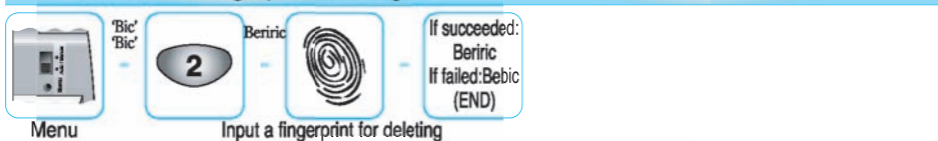
## Master adding 44P



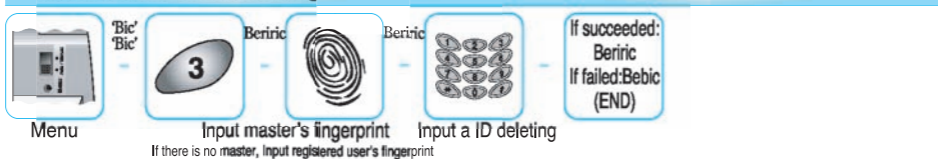
## User registration 46P



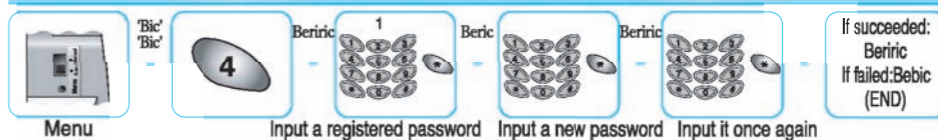
## Master or User's fingerprint deleting 43P



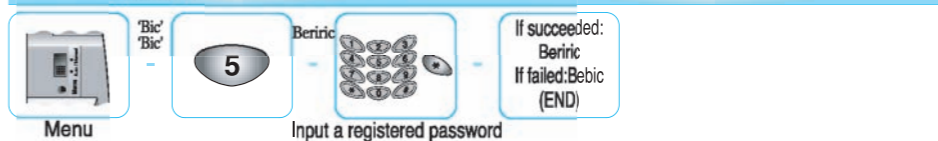
## Master or User's ID deleting 45P



## Password change - Initial password registration is pass by 1 50P



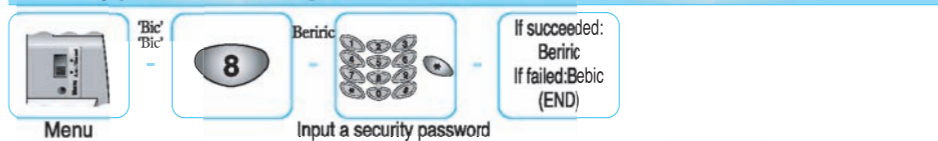
## Password deletion 51P



## Security password set up 52P



## Security password discharge 53P



## Fingerprint Test 54P

